

# EAS

EMERGENCY ASSISTANCE  
SERVICES



# 1 ACCIDENT A MINUTE, 1 DEATH IN 4 MINUTES

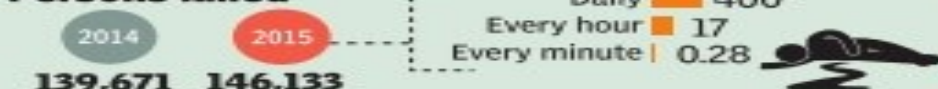
## THE KILLER ROADS OF INDIA

**A** Every day, nearly 1,400 accidents take place on Indian roads

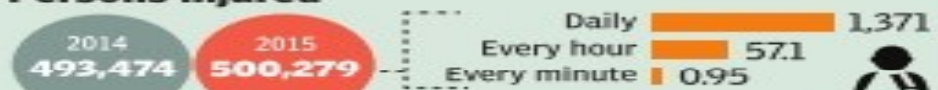
### Total crashes



### Persons killed



### Persons injured



**B** Delhi roads recorded the highest no. of deaths in 2015

10 DEADLIEST CITIES	Deaths	Crashes	% of fatal crashes
Delhi	1,622	8,085	20
Chennai	886	7,328	12
Bengaluru	713	8,434	8
Kanpur	665	1,496	44
Mumbai	611	23,486	3
Lucknow	526	1,378	38
Allahabad	479	1,019	47
Jaipur	476	1,894	25
Agra	474	1,143	41
Raipur	448	2,189	20

Has the deadliest roads

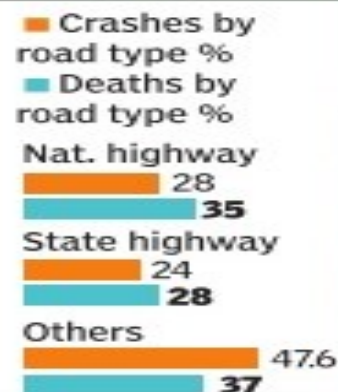
Most crashes but least fatality ratio

**D** Rural India is no less dangerous

### Share in crashes (2015)



### Share in deaths (2015)



**C** Over half of Uttar Pradesh accidents are fatal

5 DEADLIEST STATES	Deaths	Crashes	% of fatal crashes
UP	17,666	32,385	55
Tamil Nadu	15,642	69,059	23
Maharashtra	13,212	63,805	21
Karnataka	10,856	44,011	25
Rajasthan	10,510	24,072	44

Source: Transport Research Wing, MoRTH; Text: Dipak Dash

2015 data

## 37% ACCIDENTS DUE TO OVERSPEEDING

**4.5 lakh**  
road accidents

**1.4 lakh**  
dead

**4.8 lakh**  
injured

➤ **3% rise in fatalities** in 2014 over 2013 (1,37,423 deaths). **Highest jump in Ghaziabad, Allahabad, Bhopal and Ranchi**

➤ Maximum accidents reported from **Tamil Nadu, Maharashtra, Karnataka, Madhya Pradesh & Kerala**



➤ Maximum deaths in **UP, Tamil Nadu & Maharashtra**

➤ Overspeeding caused **37% of accidents**; claimed 48,654 lives

➤ **32% of deaths among paramilitary personnel** due to road accidents; just **7% in anti-terrorism operations**

## **ABSTRACT:**

- Speed of all the Vehicles are monitored. If any vehicle goes beyond the permitted speed, and if speed is continued then vehicle details are updated to the server and fine amount is subtracted automatically.
- Vibration Sensor attached with the Vehicle is used to detect the accident event. If collusion occurs then automatically Vibration is initiated & buzzer is triggered.
- In both the vehicles Camera & GPS is initiated and location info is tracked completely to identity the Hit &Run driver.





# ARCHITECTURE DIAGRAM




1. OVER SPEED MONITORING
2. HIT & RUN
  - VIBRATION DETECTION->VEHICLE ID CAPTURED->CAMERA INITIATION-> GPS TRACKING->POLICE
3. EMERGENCY
  - VIBRATION DETECTION->VEHICLE ID CAPTURED->CAMERA INITIATION->GPS TRACKING-> HOSPITALS/RELATIVES/AMBULANCE

## SCENARIOS:

1. Hit and run
  - Vehicle a is safe and not b
  - Both are not safe
  - Both are safe
2. E challen
3. Overspeeding




# Registration



*Admin Login*

User Name :

Password :



*User Registration*

Name:

Vehicle No

Contact No:

Location:

# CENTRAL SERVER

```
C:\WINDOWS\system32\cmd.exe
C:\Users\Venkateshwara\Desktop\Java\HITRUN2017>java CentralServer
Started GPS Central Server Successfully
Karthik ...
String ... GET /79.06184170937033,21.17674554290751 HTTP/1.1
Req....79.06184170937033,21.17674554290751
Data: OK
Data Trasmitted
str....79.06184170937033,21.17674554290751
21.1767455429075179.06184170937033
float value:21.176746
double value:21.176746368408203
float value:79.061844
double value:79.06184387207031
ID01&80.1426&13.0258
88.53096060009912
ID02&80.1489&13.0458
88.52024035477523
ID03&80.4589&13.0789
88.70243864305216
ID04&80&15
86.97180582289924
ID05&80&12
89.20463032448771
Shortest Route86.97180582289924
Shortest Route88.52024035477523
Shortest Route88.53096060009912
Shortest Route88.70243864305216
Shortest Route89.20463032448771
ID01&88.53096060009912
***88.53096060009912
ID02&88.52024035477523
***88.52024035477523
ID03&88.70243864305216
***88.70243864305216
ID04&86.97180582289924
***86.97180582289924
Maillocalhost86.97180582289924
X1 value...21.17674554290751....y1 Value...79.06184170937033....IP....localhost
```



# MAIN SERVER

C:\WINDOWS\system32\cmd.exe

```
C:\Users\Venkateshwara\Desktop\Java\HITRUN2017>set classpath=.;comm.jar;mysql-connector-java-3.2.0-alpha-bin.jar;
```

```
C:\Users\Venkateshwara\Desktop\Java\HITRUN2017>javac *.java
```

```
Note: Some input files use or override a deprecated API.
```

```
Note: Recompile with -Xlint:deprecation for details.
```

```
Note: Some input files use unchecked or unsafe operations.
```

```
Note: Recompile with -Xlint:unchecked for details.
```

```
C:\Users\Venkateshwara\Desktop\Java\HITRUN2017>java MainServer
```

```
Server started.....
```

```
connection accepted....
```

```
String ... GET /GPS%2321.17674554290751%2379.06184170937033%23padmini HTTP/1.1
```

```
Value.....GPS#21.17674554290751#79.06184170937033#padmini
```

```
Values updated Successfully
```

```
Data: INSERTED
```

```
Data Trasmitted
```

```
Value.....GPS#21.17674554290751#79.06184170937033#padmini
```

# HOSPITAL SERVER

C:\WINDOWS\system32\cmd.exe

```
C:\Users\Venkateshwara\Desktop\Java\HITRUN2017>java HospitalServer
Started GPS Hospital Server Successfully
21.17674554290751&79.06184170937033
21.17674554290751&79.06184170937033
21.17674554290751,79.06184170937033
KK
21.17674554290751&79.06184170937033
```

# IMAGE SERVER

C:\WINDOWS\system32\cmd.exe

```
C:\Users\Venkateshwara\Desktop\Java\HITRUN2017>set classpath=.;comm.jar;mysql-connector-java-3.2.0-alpha-bin.jar;
```

```
C:\Users\Venkateshwara\Desktop\Java\HITRUN2017>javac *.java
```

```
Note: Some input files use or override a deprecated API.
```

```
Note: Recompile with -Xlint:deprecation for details.
```

```
Note: Some input files use unchecked or unsafe operations.
```

```
Note: Recompile with -Xlint:unchecked for details.
```

```
C:\Users\Venkateshwara\Desktop\Java\HITRUN2017>java ImageServer
```

```
Server started.....
```

```
connection accepted....
```

```
Value.....IMAGE
```

```
Image Saved
```

```
Value.....IMAGE
```

# OVER SPEEDING :

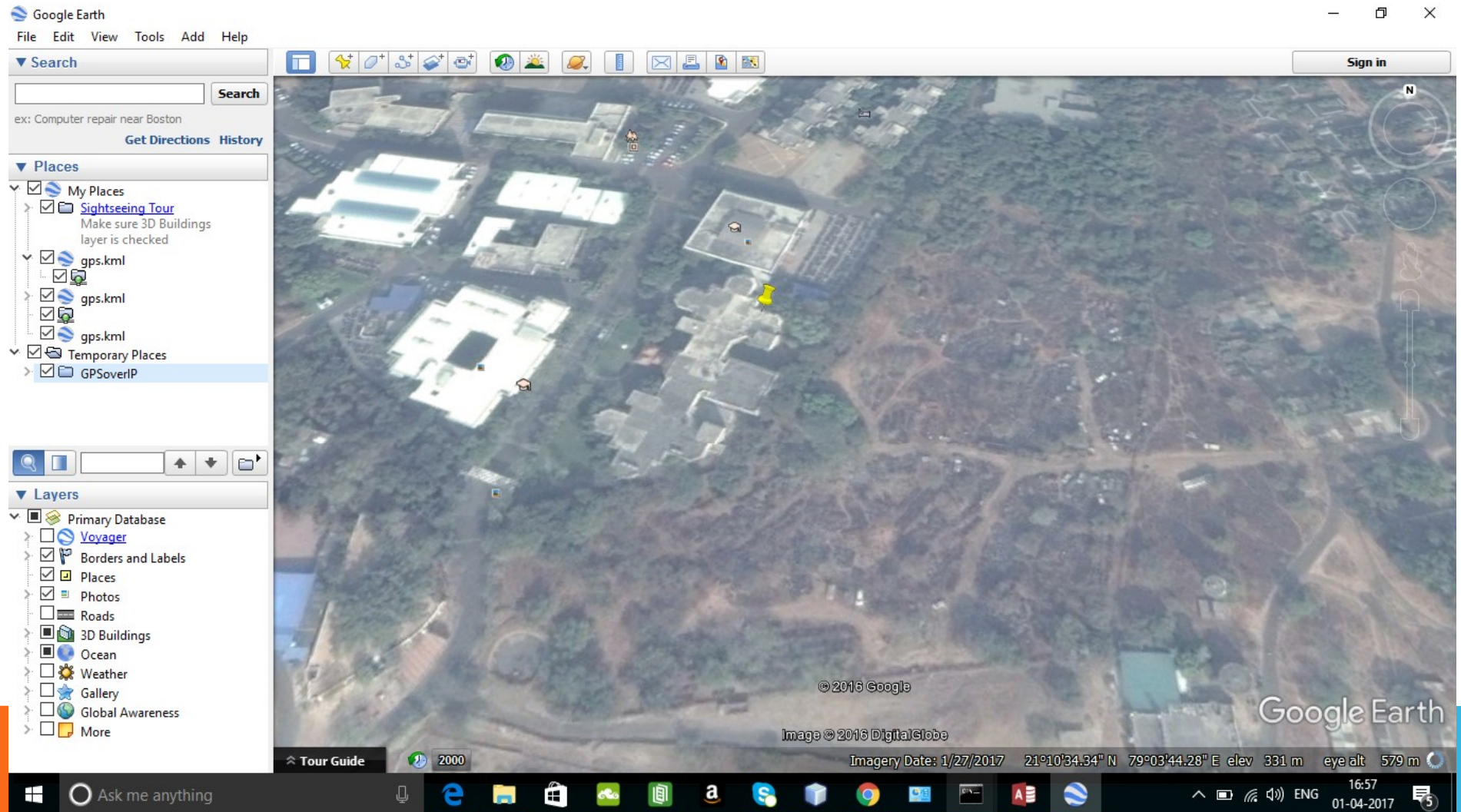
```
C:\WINDOWS\system32\cmd.exe

C:\Users\Venkateshwara\Desktop\Java\HITRUN2017>set classpath=.;comm.jar;mysql-connector-java-3.2.0-alpha-bin.jar;

C:\Users\Venkateshwara\Desktop\Java\HITRUN2017>javac *.java
Note: Some input files use or override a deprecated API.
Note: Recompile with -Xlint:deprecation for details.
Note: Some input files use unchecked or unsafe operations.
Note: Recompile with -Xlint:unchecked for details.

C:\Users\Venkateshwara\Desktop\Java\HITRUN2017>java MainServer
Server started.....
Connection accepted....
String ... GET /OVERSPEED$padmini HTTP/1.1
Value.....OVERSPEED$padmini
Over Speed fine charged
Data: FINEUPDATE
Data Trasmitted
Value.....OVERSPEED$padmini
```

# EXACT GPS LOCATION



## SOFTWARE REQUIREMENTS

MPLAB IDE software

Hi-tech C Compiler

Embedded C Language

MATLAB

**Platform** : Windows Xp/7/8

**Front End** : Java-JDK1.7,Android-sdk

**IDE** : Eclipse

**Server** : Apache tomcat

**Back End** : MYSQL





**Team Name: MYSTIC**

**Team:**

- VS.PADMINI KUMARI
- S.KESHNI
- S.PRITHIBA
- S.POORNIMA
- J.THIRUPURA SUNDARI
- R.JOTHI PRAVEENA

**Mentors:**

- Mr. SHILBODHI
- Mrs. M.THERASA
- Mrs. S.HEMAMALINI

