

CONSTRUCTION AND EVALUATION OF STABILIZED PAVEMENT

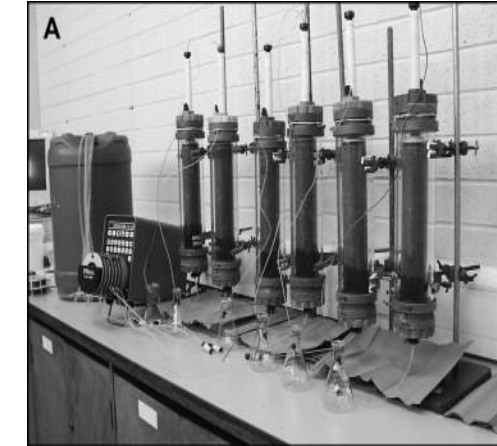
**NHIDCL Conference ,“Appropriate
Technologies for Soil & Slope
Stabilization and Road Construction in
High Rainfall Areas”
JULY 2016**

ALCHEMIST TOUCHNOLGY LIMITED

SELECTION OF STABILIZER



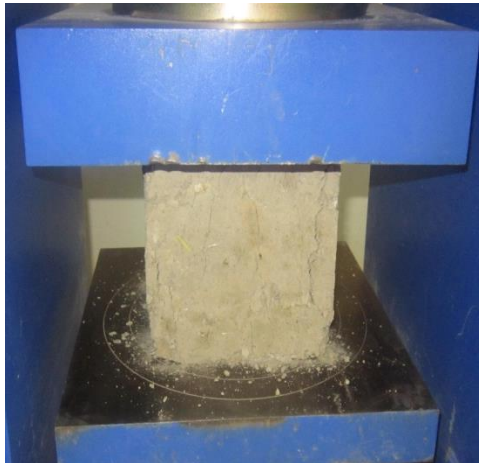
The stabilizer must be
Environment friendly



Must not leach or contaminate
nature



Must be durable



Must obtain desired strength

CONSTRUCTION OF STABILIZED LAYER



Grid Marking



Placing RBI Grade-81 Bags



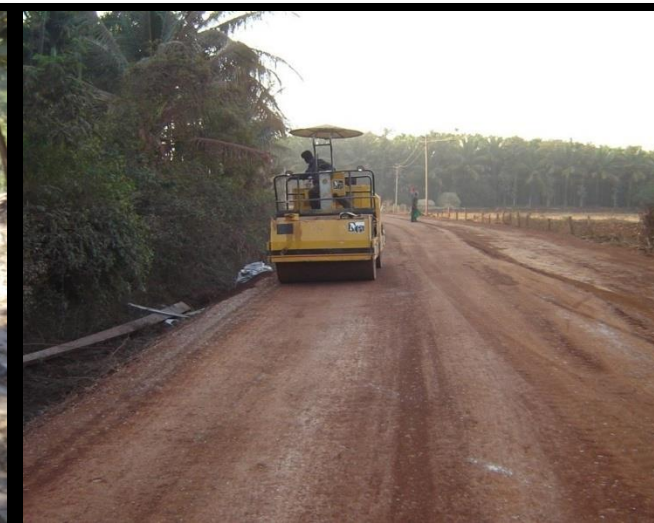
Spreading & Dry Mixing



Watering



Wet Mixing



Compacting

CONSTRUCTION OF STABILIZED LAYER

➤ Semi Automated Methods



CONSTRUCTION OF STABILIZED LAYER

- Automated method for non cohesive construction material



EVALUATION OF STABILIZED PAVEMENT

Test	Instrument Used	Pre	During	Post
Gradation	IS Sieve	✓	✓	
Atterberg's Limits	Casagrande Apparatus	✓		✓
Free Swell Index	Beaker, Kerosene	✓		✓
CBR	CBR Apparatus	✓		✓
	DCP	✓		✓
	GeoGauge	✓		✓
Unconfined Compressive Strength	UCS Apparatus	✓	✓	✓
Moisture Content Prior to Construction	RMM		✓	
Field Dry Density	Sand Replacement		✓	✓

EVALUATION OF STABILIZED PAVEMENT

FWD

GPR

NSV



THANK YOU