

Chainage	Design FRL	Existing	Horizontal	Vertical
426800.000	85.882	85.596		
426810.000	85.875	85.423		
426820.000	85.861	85.381		
426830.000	85.840	85.193		
426840.000	85.819	85.274		
426850.000	85.800	85.383		
426860.000	85.784	85.209		
426870.000	85.772	85.323		
426880.000	85.764	85.230		
426890.000	85.759	85.228		
426900.000	85.759	85.228		
426910.000	85.759	85.228		
426920.000	85.765	85.341		
426930.000	85.774	85.012		
426940.000	85.786	85.035		
426950.000	85.802	85.109		
426960.000	85.819	85.189		
426970.000	85.842	85.242		
426980.000	85.863	85.119		
426990.000	85.880	85.073		
427000.000	85.893	85.079		
427010.000	85.905	84.925		
427020.000	85.924	85.342		
427030.000	85.948	85.082		
427040.000	85.988	84.937		
427050.000	85.988	85.203		
427060.000	85.874	84.955		
427070.000	85.850	85.185		
427080.000	85.830	85.004		
427090.000	85.805	85.088		
427100.000	85.780	85.175		
427110.000	85.759	85.048		
427120.000	85.730	85.069		
427130.000	85.705	84.962		
427140.000	85.680	85.128		
427150.000	85.655	85.295		
427160.000	85.632	84.942		
427170.000	85.611	84.804		
427180.000	85.592	84.719		
427190.000	85.575	84.676		
427200.000	85.560	84.618		
427210.000	85.548	84.578		
427220.000	85.538	84.603		
427230.000	85.530	84.850		
427240.000	85.524	85.090		
427250.000	85.521	85.100		
427260.000	85.519	84.997		
427270.000	85.521	84.913		
427280.000	85.524	84.907		
427290.000	85.529	84.900		
427300.000	85.537	84.915		
427310.000	85.547	84.940		
427320.000	85.559	84.957		
427330.000	85.574	84.933		
427340.000	85.590	84.910		
427350.000	85.609	84.878		
427360.000	85.630	84.856		
427370.000	85.654	84.835		
427380.000	85.679	84.787		
427390.000	85.707	84.739		
427400.000	85.737	84.740		
427410.000	85.768	85.131		
427420.000	85.799	85.442		
427430.000	85.824	85.347		
427440.000	85.844	85.252		
427450.000	85.847	85.006		
427460.000	85.845	84.976		
427470.000	85.832	85.288		
427480.000	85.811	85.034		
427490.000	85.780	85.140		
427500.000	85.739	85.182		
427510.000	85.689	85.193		
427520.000	85.635	85.223		
427530.000	85.580	85.146		
427540.000	85.532	85.143		
427550.000	85.497	85.236		
427560.000	85.476	85.087		
427570.000	85.468	85.186		
427580.000	85.474	84.981		
427590.000	85.493	85.045		
427600.000	85.526	85.135		
427610.000	85.573	85.061		
427620.000	85.633	85.143		
427630.000	85.707	85.036		
427640.000	85.794	84.925		
427650.000	85.895	84.958		
427660.000	86.009	84.907		
427670.000	86.137	85.171		
427680.000	86.278	85.305		
427690.000	86.428	85.565		
427700.000	86.577	85.716		
427710.000	86.726	85.786		
427720.000	86.875	85.877		
427730.000	87.023	86.103		
427740.000	87.152	86.143		
427750.000	87.256	86.160		
427760.000	87.335	86.370		
427770.000	87.390	86.583		
427780.000	87.420	86.546		
427790.000	87.426	86.617		
427800.000	87.426	86.536		
427810.000	87.425	86.650		
427820.000	87.423	86.749		
427830.000	87.423	86.648		
427840.000	87.407	86.645		
427850.000	87.374	86.556		
427860.000	87.326	86.435		
427870.000	87.261	86.141		
427880.000	87.180	86.406		
427890.000	87.085	86.556		
427900.000	86.988	86.435		
427910.000	86.891	86.227		
427920.000	86.798	85.974		
427930.000	86.710	85.943		
427940.000	86.626	85.993		
427950.000	86.547	85.978		
427960.000	86.472	85.935		
427970.000	86.402	85.869		
427980.000	86.336	85.868		
427990.000	86.274	85.868		
428000.000	86.218	85.835		

**CLIENT :** NATIONAL HIGHWAYS AND INFRASTRUCTURE DEVELOPMENT CORPORATION LTD. (MINISTRY OF ROAD TRANSPORT AND HIGHWAYS) GOVERNMENT OF INDIA

**PROJECT :** CONSULTANCY SERVICES FOR PREPARATION OF FEASIBILITY STUDY AND DETAILED PROJECT REPORT FOR UPGRADATION OF DERGAON TOWN SECTION OF NH-37 FROM KM 426.800 TO KM 437.800 IN THE STATE OF ASSAM

**DESIGN CONSULTANT :** VOYANTS SOLUTIONS PVT LTD. 403, 4th Floor, Park Centra, Sector-30, NH-8 Gurugram-122001, Haryana, India CIN- U71410HR2004PTC046918 Ph: 0124-4598200, Fax: 0124-4019051, E-mail: info@voyants.in, www.voyants.in

**Detailed Project Report**

**DESIGNED BY** PD **DRAWN BY** SS **CHECKED BY** SD **APPROVED BY** SKC

**TITLE :** Plan & Profile (km 426+800 to km 428+000)

**DRG. No. :** VSPL/1718-081A/DERGAON/DPR/PP-01

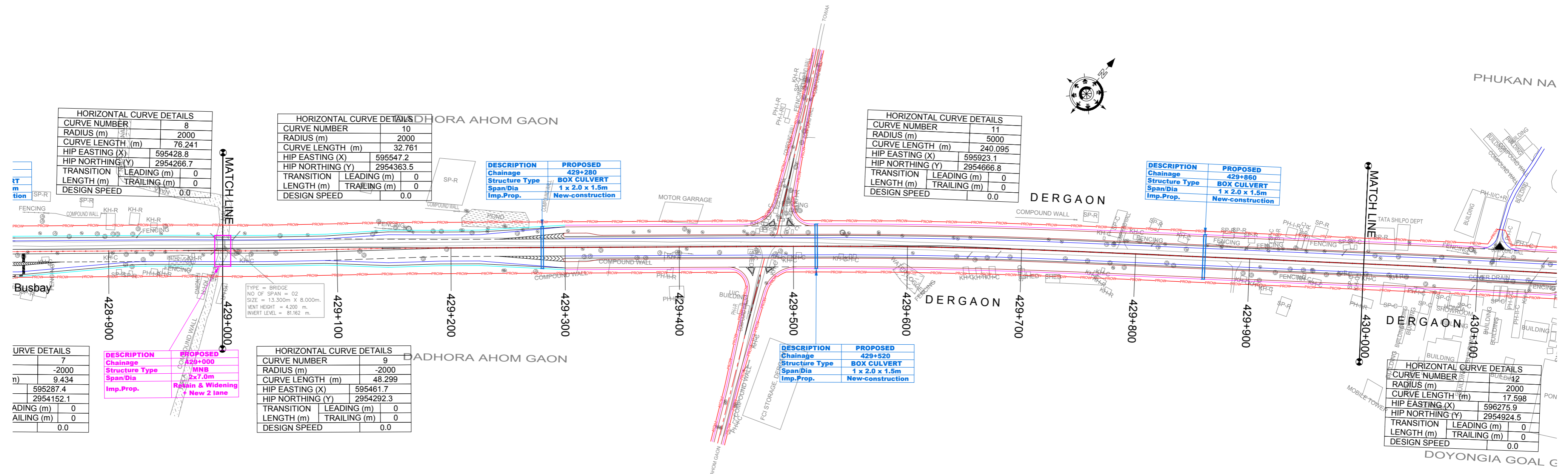
**REVISION:** R1 **NOVEMBER 2019**

**SCALE :** 1:2500 **SHEET SIZE** A2

REV.	DATE	DESCRIPTION

Path: F:\V\_S\Project\Work\1718-081 -Bharatnagar\_2\1019 Dergaon\December 2019\16\_Plan & Profile\Sheet\_Dergaon.dwg





HORIZONTAL CURVE DETAILS	
CURVE NUMBER	8
RADIUS (m)	2000
CURVE LENGTH (m)	76.241
HIP EASTING (X)	595428.8
HIP NORTHING (Y)	2954266.7
TRANSITION LEADING (m)	0
LENGTH (m)	0
TRAILING (m)	0
DESIGN SPEED	0.0

HORIZONTAL CURVE DETAILS	
CURVE NUMBER	10
RADIUS (m)	2000
CURVE LENGTH (m)	32.761
HIP EASTING (X)	595547.2
HIP NORTHING (Y)	2954363.5
TRANSITION LEADING (m)	0
LENGTH (m)	0
TRAILING (m)	0
DESIGN SPEED	0.0

HORIZONTAL CURVE DETAILS	
CURVE NUMBER	11
RADIUS (m)	5000
CURVE LENGTH (m)	240.095
HIP EASTING (X)	595923.1
HIP NORTHING (Y)	2954666.8
TRANSITION LEADING (m)	0
LENGTH (m)	0
TRAILING (m)	0
DESIGN SPEED	0.0

DESCRIPTION		PROPOSED	
Chainage	429+280	Structure Type	BOX CULVERT
Span/Dia	1 x 2.0 x 1.5m	Imp.Prop.	New-construction

DESCRIPTION		PROPOSED	
Chainage	429+520	Structure Type	BOX CULVERT
Span/Dia	1 x 2.0 x 1.5m	Imp.Prop.	New-construction

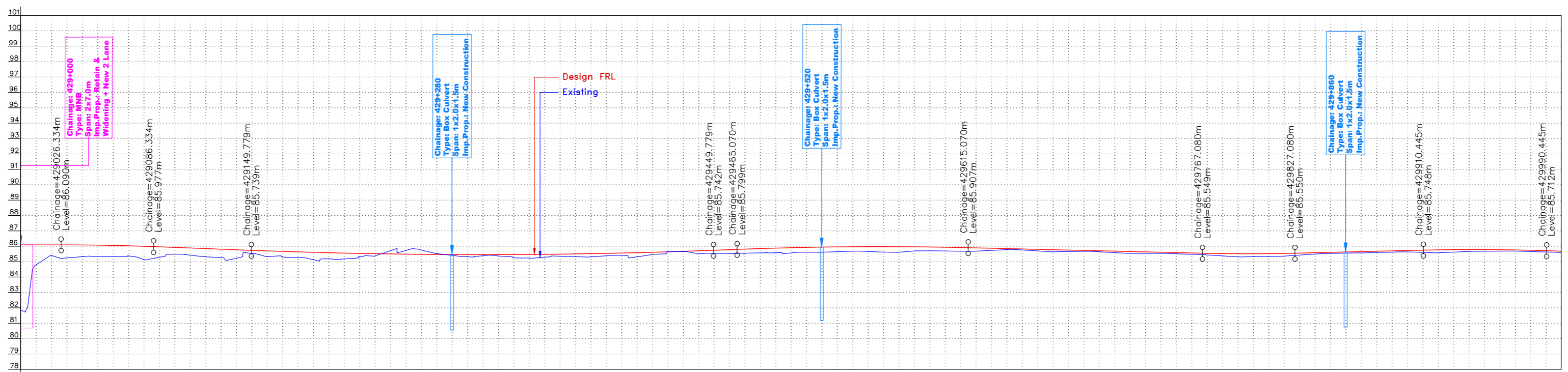
HORIZONTAL CURVE DETAILS	
CURVE NUMBER	12
RADIUS (m)	2000
CURVE LENGTH (m)	17.598
HIP EASTING (X)	596275.9
HIP NORTHING (Y)	2954924.5
TRANSITION LEADING (m)	0
LENGTH (m)	0
TRAILING (m)	0
DESIGN SPEED	0.0

URVE DETAILS	
Curve No.	7
Radius (m)	-2000
Curve Length (m)	9.434
Hip Easting (X)	595287.4
Hip Northing (Y)	2954152.1
Transition Leading (m)	0
Length (m)	0
Trailing (m)	0
Design Speed	0.0

HORIZONTAL CURVE DETAILS	
CURVE NUMBER	9
RADIUS (m)	-2000
CURVE LENGTH (m)	48.299
HIP EASTING (X)	595461.7
HIP NORTHING (Y)	2954292.3
TRANSITION LEADING (m)	0
LENGTH (m)	0
TRAILING (m)	0
DESIGN SPEED	0.0

DESCRIPTION		PROPOSED	
Chainage	429+000	Structure Type	MNS
Span/Dia	2x7.0m	Imp.Prop.	Retain & Widening
			New 2 lane

TYPE = BRIDGE  
NO OF SPAN = 02  
SIZE = 13.300m X 8.000m.  
VENT HEIGHT = 4.200 m  
INVERT LEVEL = 81.162 m.



Stationing	Design FRL	Existing	Horizontal	Vertical	Chainage
429000.000	86.090	81.868			429000.000
429010.000	86.090	81.789			429010.000
429020.000	86.090	81.708			429020.000
429030.000	86.084	81.625			429030.000
429040.000	86.072	81.541			429040.000
429050.000	86.059	81.458			429050.000
429060.000	86.046	81.375			429060.000
429070.000	86.033	81.292			429070.000
429080.000	86.020	81.209			429080.000
429090.000	86.007	81.126			429090.000
429100.000	85.994	81.043			429100.000
429110.000	85.981	80.960			429110.000
429120.000	85.968	80.877			429120.000
429130.000	85.955	80.794			429130.000
429140.000	85.942	80.711			429140.000
429150.000	85.929	80.628			429150.000
429160.000	85.916	80.545			429160.000
429170.000	85.903	80.462			429170.000
429180.000	85.890	80.379			429180.000
429190.000	85.877	80.296			429190.000
429200.000	85.864	80.213			429200.000
429210.000	85.851	80.130			429210.000
429220.000	85.838	80.047			429220.000
429230.000	85.825	79.964			429230.000
429240.000	85.812	79.881			429240.000
429250.000	85.799	79.798			429250.000
429260.000	85.786	79.715			429260.000
429270.000	85.773	79.632			429270.000
429280.000	85.760	79.549			429280.000
429290.000	85.747	79.466			429290.000
429300.000	85.734	79.383			429300.000
429310.000	85.721	79.300			429310.000
429320.000	85.708	79.217			429320.000
429330.000	85.695	79.134			429330.000
429340.000	85.682	79.051			429340.000
429350.000	85.669	78.968			429350.000
429360.000	85.656	78.885			429360.000
429370.000	85.643	78.802			429370.000
429380.000	85.630	78.719			429380.000
429390.000	85.617	78.636			429390.000
429400.000	85.604	78.553			429400.000
429410.000	85.591	78.470			429410.000
429420.000	85.578	78.387			429420.000
429430.000	85.565	78.304			429430.000
429440.000	85.552	78.221			429440.000
429450.000	85.539	78.138			429450.000
429460.000	85.526	78.055			429460.000
429470.000	85.513	77.972			429470.000
429480.000	85.500	77.889			429480.000
429490.000	85.487	77.806			429490.000
429500.000	85.474	77.723			429500.000
429510.000	85.461	77.640			429510.000
429520.000	85.448	77.557			429520.000
429530.000	85.435	77.474			429530.000
429540.000	85.422	77.391			429540.000
429550.000	85.409	77.308			429550.000
429560.000	85.396	77.225			429560.000
429570.000	85.383	77.142			429570.000
429580.000	85.370	77.059			429580.000
429590.000	85.357	76.976			429590.000
429600.000	85.344	76.893			429600.000
429610.000	85.331	76.810			429610.000
429620.000	85.318	76.727			429620.000
429630.000	85.305	76.644			429630.000
429640.000	85.292	76.561			429640.000
429650.000	85.279	76.478			429650.000
429660.000	85.266	76.395			429660.000
429670.000	85.253	76.312			429670.000
429680.000	85.240	76.229			429680.000
429690.000	85.227	76.146			429690.000
429700.000	85.214	76.063			429700.000
429710.000	85.201	75.980			429710.000
429720.000	85.188	75.897			429720.000
429730.000	85.175	75.814			429730.000
429740.000	85.162	75.731			429740.000
429750.000	85.149	75.648			429750.000
429760.000	85.136	75.565			429760.000
429770.000	85.123	75.482			429770.000
429780.000	85.110	75.399			429780.000
429790.000	85.097	75.316			429790.000
429800.000	85.084	75.233			429800.000
429810.000	85.071	75.150			429810.000
429820.000	85.058	75.067			429820.000
429830.000	85.045	74.984			429830.000
429840.000	85.032	74.901			429840.000
429850.000	85.019	74.818			429850.000
429860.000	85.006	74.735			429860.000
429870.000	84.993	74.652			429870.000
429880.000	84.980	74.569			429880.000
429890.000	84.967	74.486			429890.000
429900.000	84.954	74.403			429900.000
429910.000	84.941	74.320			429910.000
429920.000	84.928	74.237			429920.000
429930.000	84.915	74.154			429930.000
429940.000	84.902	74.071			429940.000
429950.000	84.889	73.988			429950.000
429960.000	84.876	73.905			429960.000
429970.000	84.863	73.822			429970.000
429980.000	84.850	73.739			429980.000
429990.000	84.837	73.656			429990.000
430000.000	84.824	73.573			430000.000

Path: F:\NO\_Project\Work\1718-081 -Bharatmeas\_2\19\Derogaon\December 2019\16\_Plan & Profile\Sheet -Derogaon.dwg

CLIENT :

**NATIONAL HIGHWAYS AND INFRASTRUCTURE DEVELOPMENT CORPORATION LTD.**  
(MINISTRY OF ROAD TRANSPORT AND HIGHWAYS)  
GOVERNMENT OF INDIA

PROJECT :

**CONSULTANCY SERVICES FOR PREPARATION OF FEASIBILITY STUDY AND DETAILED PROJECT REPORT FOR UPGRADATION OF DERGAON TOWN SECTION OF NH-37 FROM KM 426.800 TO KM 437.800 IN THE STATE OF ASSAM**

DESIGN CONSULTANT:

**VOYANTS SOLUTIONS PVT LTD.**  
403, 4th Floor, Park Centra,  
Sector-30, NH-8  
Gurugram-122001, Haryana, India  
CIN- U7140HR2004PTC046918  
Ph: 0124-4598200, Fax: 0124-4019051,  
E-mail: info@voyants.in, www.voyants.in

**Detailed Project Report**

DESIGNED BY	DRAWN BY	CHECKED BY	APPROVED BY
PD	SS	SD	SKC

REV.	DATE	DESCRIPTION
------	------	-------------

DESIGNED BY	DRAWN BY	CHECKED BY	APPROVED BY
PD	SS	SD	SKC
SCALE :	1:2500	SHEET SIZE	A2

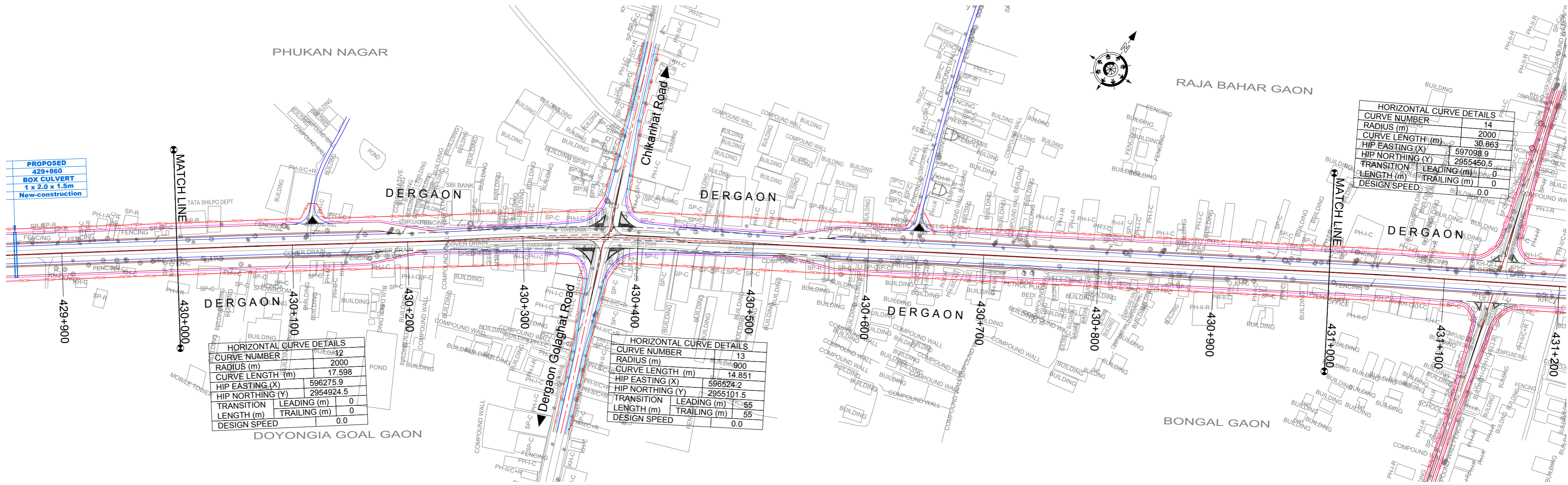
TITLE :

**Plan & Profile**  
(km 429+000 to km 430+000)

DRG. No. :  
VSPL/1718-081A/DERGAON/DPR/PP-03

REVISION:R1

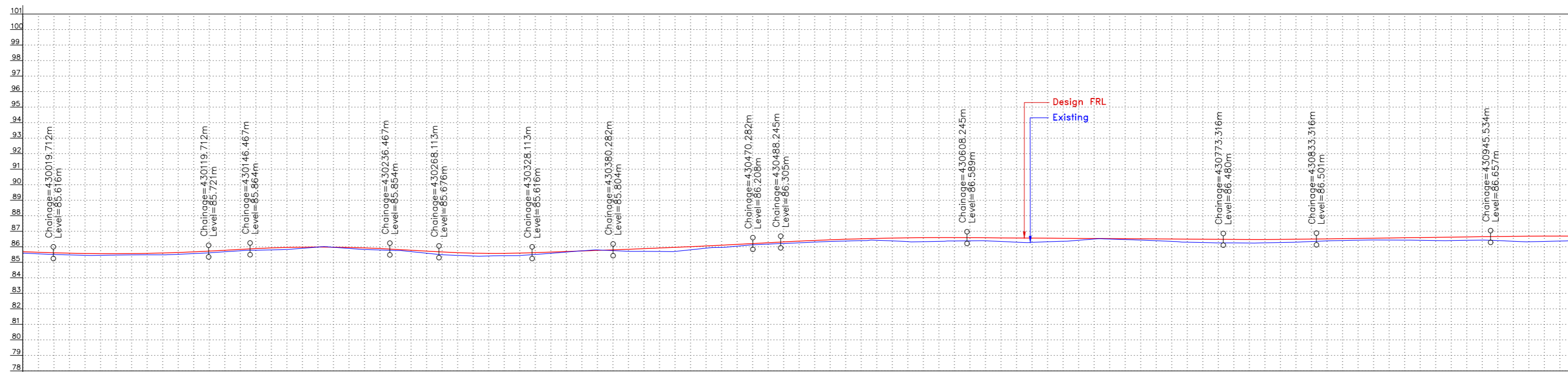
NOVEMBER 2019



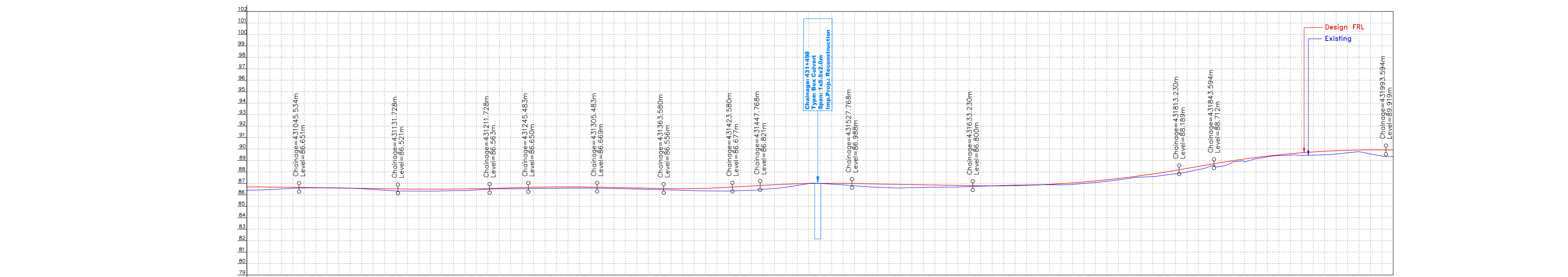
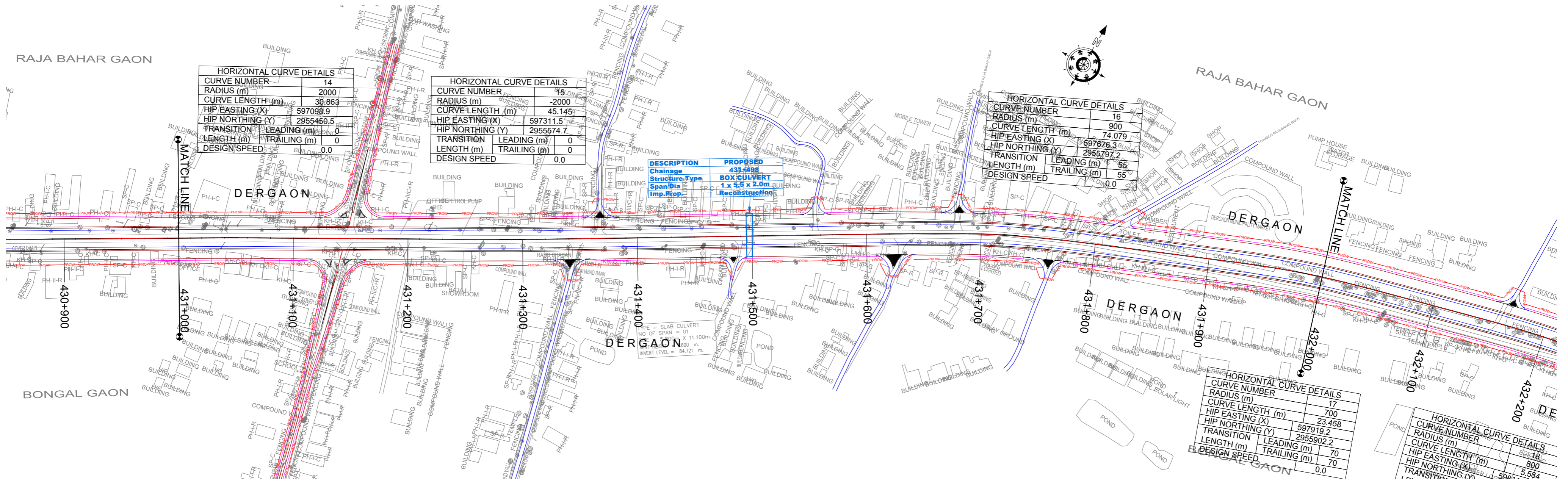
HORIZONTAL CURVE DETAILS	
CURVE NUMBER	12
RADIUS (m)	2000
CURVE LENGTH (m)	17.598
HIP EASTING (X)	596275.9
HIP NORTHING (Y)	2954924.5
TRANSITION LEADING (m)	0
LENGTH (m)	TRAILING (m)
DESIGN SPEED	0.0

HORIZONTAL CURVE DETAILS	
CURVE NUMBER	13
RADIUS (m)	14.851
CURVE LENGTH (m)	596524.2
HIP EASTING (X)	596524.2
HIP NORTHING (Y)	2955101.5
TRANSITION LEADING (m)	65
LENGTH (m)	TRAILING (m)
DESIGN SPEED	0.0

HORIZONTAL CURVE DETAILS	
CURVE NUMBER	14
RADIUS (m)	2000
CURVE LENGTH (m)	30.863
HIP EASTING (X)	597098.9
HIP NORTHING (Y)	2955450.5
TRANSITION LEADING (m)	0
LENGTH (m)	TRAILING (m)
DESIGN SPEED	0.0



Chainage	Design FRL	Existing	Horizontal	Vertical
430000.000	85.581	85.534		
430010.000	85.547	85.547		
430020.000	85.615	85.502		
430030.000	85.576	85.476		
430040.000	85.567	85.450		
430050.000	85.557	85.449		
430060.000	85.554	85.464		
430070.000	85.561	85.479		
430080.000	85.576	85.481		
430090.000	85.589	85.484		
430100.000	85.632	85.516		
430110.000	85.672	85.562		
430120.000	85.722	85.610		
430130.000	85.776	85.676		
430140.000	85.829	85.742		
430150.000	85.882	85.781		
430160.000	85.926	85.802		
430170.000	85.957	85.829		
430180.000	85.976	85.900		
430190.000	85.982	85.979		
430200.000	85.977	85.971		
430210.000	85.959	85.929		
430220.000	85.923	85.879		
430230.000	85.887	85.793		
430240.000	85.843	85.760		
430250.000	85.778	85.690		
430260.000	85.722	85.598		
430270.000	85.666	85.487		
430280.000	85.621	85.445		
430290.000	85.590	85.408		
430300.000	85.576	85.410		
430310.000	85.576	85.424		
430320.000	85.592	85.439		
430330.000	85.623	85.505		
430340.000	85.659	85.580		
430350.000	85.699	85.659		
430360.000	85.731	85.737		
430370.000	85.767	85.799		
430380.000	85.802	85.752		
430390.000	85.839	85.709		
430400.000	85.878	85.705		
430410.000	85.919	85.698		
430420.000	85.962	85.700		
430430.000	86.007	85.804		
430440.000	86.054	85.909		
430450.000	86.103	86.039		
430460.000	86.153	86.171		
430470.000	86.206	86.214		
430480.000	86.260	86.256		
430490.000	86.314	86.301		
430500.000	86.365	86.344		
430510.000	86.450	86.370		
430520.000	86.486	86.396		
430530.000	86.516	86.418		
430540.000	86.541	86.379		
430550.000	86.562	86.334		
430560.000	86.577	86.329		
430570.000	86.587	86.349		
430580.000	86.592	86.377		
430590.000	86.592	86.384		
430600.000	86.587	86.384		
430610.000	86.581	86.384		
430620.000	86.574	86.349		
430630.000	86.574	86.299		
430640.000	86.568	86.288		
430650.000	86.561	86.288		
430660.000	86.554	86.288		
430670.000	86.548	86.257		
430680.000	86.541	86.219		
430690.000	86.535	86.199		
430700.000	86.528	86.199		
430710.000	86.521	86.165		
430720.000	86.515	86.133		
430730.000	86.509	86.101		
430740.000	86.502	86.099		
430750.000	86.498	86.297		
430760.000	86.488	86.277		
430770.000	86.482	86.250		
430780.000	86.476	86.249		
430790.000	86.473	86.249		
430800.000	86.474	86.255		
430810.000	86.478	86.276		
430820.000	86.486	86.299		
430830.000	86.486	86.308		
430840.000	86.494	86.316		
430850.000	86.498	86.324		
430860.000	86.502	86.332		
430870.000	86.505	86.340		
430880.000	86.508	86.348		
430890.000	86.511	86.356		
430900.000	86.513	86.364		
430910.000	86.515	86.372		
430920.000	86.517	86.379		
430930.000	86.519	86.386		
430940.000	86.521	86.393		
430950.000	86.523	86.400		
430960.000	86.525	86.407		
430970.000	86.527	86.414		
430980.000	86.529	86.421		
430990.000	86.531	86.428		
431000.000	86.533	86.435		
431010.000	86.535	86.442		
431020.000	86.537	86.449		
431030.000	86.539	86.456		
431040.000	86.541	86.463		
431050.000	86.543	86.470		
431060.000	86.545	86.477		
431070.000	86.547	86.484		
431080.000	86.549	86.491		
431090.000	86.551	86.498		
431100.000	86.553	86.505		
431110.000	86.555	86.512		
431120.000	86.557	86.519		
431130.000	86.559	86.526		
431140.000	86.561	86.533		
431150.000	86.563	86.540		
431160.000	86.565	86.547		
431170.000	86.567	86.554		
431180.000	86.569	86.561		
431190.000	86.571	86.568		
431200.000	86.573	86.575		
431210.000	86.575	86.582		
431220.000	86.577	86.589		
431230.000	86.579	86.596		
431240.000	86.581	86.603		
431250.000	86.583	86.610		
431260.000	86.585	86.617		
431270.000	86.587	86.624		
431280.000	86.589	86.631		
431290.000	86.591	86.638		
431300.000	86.593	86.645		
431310.000	86.595	86.652		
431320.000	86.597	86.659		
431330.000	86.599	86.666		
431340.000	86.601	86.673		
431350.000	86.603	86.680		
431360.000	86.605	86.687		
431370.000	86.607	86.694		
431380.000	86.609	86.701		
431390.000	86.611	86.708		
431400.000	86.613	86.715		
431410.000	86.615	86.722		
431420.000	86.617	86.729		
431430.000	86.619	86.736		
431440.000	86.621	86.743		
431450.000	86.623	86.750		
431460.000	86.625	86.757		
431470.000	86.627	86.764		
431480.000	86.629	86.771		
431490.000	86.631	86.778		
431500.000	86.633	86.785		
431510.000	86.635	86.792		
431520.000	86.637	86.799		
431530.000	86.639	86.806		
431540.000	86.641	86.813		
431550.000	86.643	86.820		
431560.000	86.645	86.827		
431570.000	86.647	86.834		
431580.000	86.649	86.841		
431590.000	86.651	86.848		
431600.000	86.653	86.855		
431610.000	86.655	86.862		
431620.000	86.657	86.869		
431630.000	86.659	86.876		
431640.000	86.661	86.883		
431650.000	86.663	86.890		
431660.000	86.665	86.897		
431670.000	86.667	86.904		
431680.000	86.669	86.911		
431690.000	86.671	86.918		
431700.000	86.673	86.925		
431710.000	86.675	86.932		
431720.000	86.677	86.939		
431730.000	86.679	86.946		
431740.000	86.681	86.953		
431750.000	86.683	86.960		
431760.000	86.685	86.967		
431770.000	86.687	86.974		
431780.000	86.689	86.981		
431790.000	86.691	86.988		
431800.000	86.693	86.995		
431810.000	86.695	87.002		
431820.000	86.697	87.009		
431830.000	86.699	87.016		
431840.000	86.701	87.023		
431850.000	86.703	87.030		
431860.000	86.705	87.037		
431870.000	86.707	87.044		
431880.000	86.709	87.051		
431890.000	86.711	87.058		
431900.000	86.713	87.065		
431910.000	86.715	87.072		
431920.000	86.717	87.079		
431930.000	86.719	87.086		
4319				

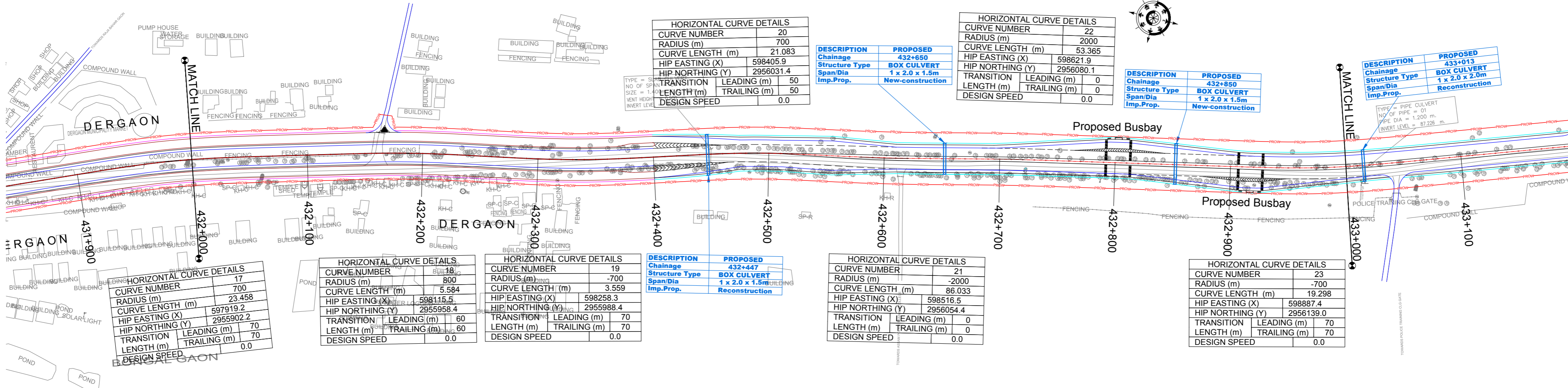


Station	Design FRL	Existing	Horizontal	Vertical	Chainage
431000.000	86.589	86.396			431000.000
431010.000	86.425	86.425			431010.000
431020.000	86.681	86.457			431020.000
431030.000	86.671	86.968			431030.000
431040.000	86.659	86.566			431040.000
431050.000	86.643	86.600			431050.000
431060.000	86.630	86.608			431060.000
431070.000	86.619	86.598			431070.000
431080.000	86.599	86.589			431080.000
431090.000	86.584	86.587			431090.000
431100.000	86.569	86.538			431100.000
431110.000	86.559	86.474			431110.000
431120.000	86.539	86.406			431120.000
431130.000	86.522	86.337			431130.000
431140.000	86.509	86.332			431140.000
431150.000	86.499	86.327			431150.000
431160.000	86.491	86.324			431160.000
431170.000	86.501	86.341			431170.000
431180.000	86.508	86.358			431180.000
431190.000	86.520	86.378			431190.000
431200.000	86.533	86.428			431200.000
431210.000	86.559	86.482			431210.000
431220.000	86.589	86.527			431220.000
431230.000	86.619	86.531			431230.000
431240.000	86.636	86.549			431240.000
431250.000	86.659	86.569			431250.000
431260.000	86.679	86.566			431260.000
431270.000	86.699	86.571			431270.000
431280.000	86.689	86.583			431280.000
431290.000	86.690	86.590			431290.000
431300.000	86.678	86.581			431300.000
431310.000	86.660	86.566			431310.000
431320.000	86.641	86.550			431320.000
431330.000	86.626	86.532			431330.000
431340.000	86.609	86.508			431340.000
431350.000	86.582	86.489			431350.000
431360.000	86.563	86.462			431360.000
431370.000	86.546	86.430			431370.000
431380.000	86.524	86.397			431380.000
431390.000	86.505	86.365			431390.000
431400.000	86.573	86.343			431400.000
431410.000	86.608	86.334			431410.000
431420.000	86.656	86.331			431420.000
431430.000	86.715	86.364			431430.000
431440.000	86.775	86.397			431440.000
431450.000	86.834	86.473			431450.000
431460.000	86.886	86.557			431460.000
431470.000	86.929	86.657			431470.000
431480.000	86.963	86.819			431480.000
431490.000	86.994	86.994			431490.000
431500.000	87.000	87.000			431500.000
431510.000	87.000	86.935			431510.000
431520.000	86.999	86.872			431520.000
431530.000	86.984	86.794			431530.000
431540.000	86.966	86.716			431540.000
431550.000	86.948	86.665			431550.000
431560.000	86.931	86.626			431560.000
431570.000	86.913	86.602			431570.000
431580.000	86.895	86.626			431580.000
431590.000	86.877	86.651			431590.000
431600.000	86.865	86.665			431600.000
431610.000	86.841	86.672			431610.000
431620.000	86.824	86.682			431620.000
431630.000	86.806	86.720			431630.000
431640.000	86.790	86.759			431640.000
431650.000	86.785	86.784			431650.000
431660.000	86.790	86.815			431660.000
431670.000	86.806	86.845			431670.000
431680.000	86.832	86.859			431680.000
431690.000	86.869	86.878			431690.000
431700.000	86.916	86.876			431700.000
431710.000	86.974	86.908			431710.000
431720.000	87.043	86.997			431720.000
431730.000	87.121	87.121			431730.000
431740.000	87.212	87.076			431740.000
431750.000	87.312	87.180			431750.000
431760.000	87.422	87.300			431760.000
431770.000	87.544	87.443			431770.000
431780.000	87.675	87.544			431780.000
431790.000	87.818	87.598			431790.000
431800.000	87.971	87.711			431800.000
431810.000	88.134	87.839			431810.000
431820.000	88.306	87.990			431820.000
431830.000	88.478	88.200			431830.000
431840.000	88.650	88.483			431840.000
431850.000	88.820	88.481			431850.000
431860.000	88.978	88.858			431860.000
431870.000	89.124	88.916			431870.000
431880.000	89.258	89.136			431880.000
431890.000	89.379	89.307			431890.000
431900.000	89.489	89.428			431900.000
431910.000	89.586	89.462			431910.000
431920.000	89.670	89.439			431920.000
431930.000	89.743	89.465			431930.000
431940.000	89.803	89.491			431940.000
431950.000	89.852	89.562			431950.000
431960.000	89.887	89.667			431960.000
431970.000	89.911	89.773			431970.000
431980.000	89.923	89.877			431980.000
431990.000	89.922	89.964			431990.000
432000.000	89.911	89.928			432000.000

<b>CLIENT :</b>  <b>NATIONAL HIGHWAYS AND INFRASTRUCTURE DEVELOPMENT CORPORATION LTD.</b> (MINISTRY OF ROAD TRANSPORT AND HIGHWAYS) GOVERNMENT OF INDIA	<b>PROJECT :</b> <b>CONSULTANCY SERVICES FOR PREPARATION OF FEASIBILITY STUDY AND DETAILED PROJECT REPORT FOR UPGRADATION OF DERGAON TOWN SECTION OF NH-37 FROM KM 426.800 TO KM 437.800 IN THE STATE OF ASSAM</b>	<b>DESIGN CONSULTANT:</b>  <b>VOYANTS SOLUTIONS PVT LTD.</b> 403, 4th Floor, Park Centra, Sector-30, NH-8 Gurugram-122001, Haryana, India CIN: U7140HR2004PTC046918 Ph: 0124-4598200, Fax: 0124-4019051, E-mail: info@voyants.in, www.voyants.in	<b>Detailed Project Report</b>				<b>DESIGNED BY</b> PD	<b>DRAWN BY</b> SS	<b>CHECKED BY</b> SD	<b>APPROVED BY</b> SKC	<b>TITLE :</b> <b>Plan &amp; Profile</b> (km 431+000 to km 432+000)
			<b>SCALE :</b> 1:2500	<b>SHEET SIZE</b>	<b>A2</b>	<b>DRG. No. :</b> VSPL/1718-081A/DERGAON/PP-05	<b>REVISION:R1</b>	<b>NOVEMBER 2019</b>			

Path: F:\V.O.Project\Work\1718-081 -Bharatnagar\_2\2019\Deragon\December 2019\16\_Plan & Profile\Sheet\_Dergaon.dwg

RAJA BAHAR GAON



HORIZONTAL CURVE DETAILS	
CURVE NUMBER	20
RADIUS (m)	700
CURVE LENGTH (m)	21.083
HIP EASTING (X)	598405.9
HIP NORTHING (Y)	2956031.4
TRANSITION LEADING (m)	50
TRANSITION TRAILING (m)	50
DESIGN SPEED	0.0

HORIZONTAL CURVE DETAILS	
CURVE NUMBER	22
RADIUS (m)	2000
CURVE LENGTH (m)	53.365
HIP EASTING (X)	598621.9
HIP NORTHING (Y)	2956080.1
TRANSITION LEADING (m)	0
TRANSITION TRAILING (m)	0
DESIGN SPEED	0.0

DESCRIPTION		PROPOSED	
Chainage	432+650	Structure Type	BOX CULVERT
Span/Dia	1 x 2.0 x 1.5m	Imp.Prop.	New-construction

DESCRIPTION		PROPOSED	
Chainage	433+013	Structure Type	BOX CULVERT
Span/Dia	1 x 2.0 x 2.0m	Imp.Prop.	Reconstruction

HORIZONTAL CURVE DETAILS	
CURVE NUMBER	17
RADIUS (m)	700
CURVE LENGTH (m)	23.458
HIP EASTING (X)	597919.2
HIP NORTHING (Y)	2955902.2
TRANSITION LEADING (m)	70
TRANSITION TRAILING (m)	70
DESIGN SPEED	0.0

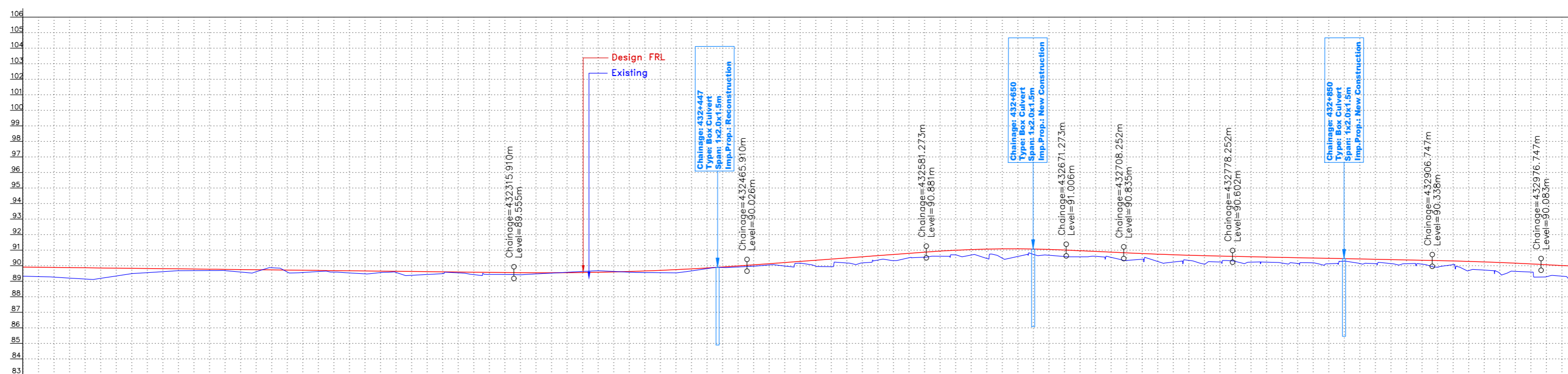
HORIZONTAL CURVE DETAILS	
CURVE NUMBER	18
RADIUS (m)	800
CURVE LENGTH (m)	5.584
HIP EASTING (X)	598115.5
HIP NORTHING (Y)	2955958.4
TRANSITION LEADING (m)	60
TRANSITION TRAILING (m)	60
DESIGN SPEED	0.0

HORIZONTAL CURVE DETAILS	
CURVE NUMBER	19
RADIUS (m)	-700
CURVE LENGTH (m)	3.559
HIP EASTING (X)	598258.3
HIP NORTHING (Y)	2955988.4
TRANSITION LEADING (m)	70
TRANSITION TRAILING (m)	70
DESIGN SPEED	0.0

DESCRIPTION		PROPOSED	
Chainage	432+447	Structure Type	BOX CULVERT
Span/Dia	1 x 2.0 x 1.5m	Imp.Prop.	Reconstruction

HORIZONTAL CURVE DETAILS	
CURVE NUMBER	21
RADIUS (m)	-2000
CURVE LENGTH (m)	86.033
HIP EASTING (X)	598516.5
HIP NORTHING (Y)	2956054.4
TRANSITION LEADING (m)	0
TRANSITION TRAILING (m)	0
DESIGN SPEED	0.0

HORIZONTAL CURVE DETAILS	
CURVE NUMBER	23
RADIUS (m)	-700
CURVE LENGTH (m)	19.298
HIP EASTING (X)	598887.4
HIP NORTHING (Y)	2956139.0
TRANSITION LEADING (m)	70
TRANSITION TRAILING (m)	70
DESIGN SPEED	0.0



Chainage	Design FRL	Existing	Horizontal	Vertical
432000.000	89.328	89.328	A=49000.000 L=70.000m	L=322.316m G=-0.113
432010.000	89.300	89.300	A=48000.000 L=60.000m	
432020.000	89.889	89.889	A=48000.000 L=60.000m	
432030.000	89.767	89.767	A=48000.000 L=60.000m	
432040.000	89.866	89.866	A=48000.000 L=60.000m	
432050.000	89.859	89.859	A=48000.000 L=60.000m	
432060.000	89.866	89.866	A=48000.000 L=60.000m	
432070.000	89.866	89.866	A=48000.000 L=60.000m	
432080.000	89.866	89.866	A=48000.000 L=60.000m	
432090.000	89.866	89.866	A=48000.000 L=60.000m	
432100.000	89.866	89.866	A=48000.000 L=60.000m	
432110.000	89.866	89.866	A=48000.000 L=60.000m	
432120.000	89.866	89.866	A=48000.000 L=60.000m	
432130.000	89.866	89.866	A=48000.000 L=60.000m	
432140.000	89.866	89.866	A=48000.000 L=60.000m	
432150.000	89.866	89.866	A=48000.000 L=60.000m	
432160.000	89.866	89.866	A=48000.000 L=60.000m	
432170.000	89.866	89.866	A=48000.000 L=60.000m	
432180.000	89.866	89.866	A=48000.000 L=60.000m	
432190.000	89.866	89.866	A=48000.000 L=60.000m	
432200.000	89.866	89.866	A=48000.000 L=60.000m	
432210.000	89.866	89.866	A=48000.000 L=60.000m	
432220.000	89.866	89.866	A=48000.000 L=60.000m	
432230.000	89.866	89.866	A=48000.000 L=60.000m	
432240.000	89.866	89.866	A=48000.000 L=60.000m	
432250.000	89.866	89.866	A=48000.000 L=60.000m	
432260.000	89.866	89.866	A=48000.000 L=60.000m	
432270.000	89.866	89.866	A=48000.000 L=60.000m	
432280.000	89.866	89.866	A=48000.000 L=60.000m	
432290.000	89.866	89.866	A=48000.000 L=60.000m	
432300.000	89.866	89.866	A=48000.000 L=60.000m	
432310.000	89.866	89.866	A=48000.000 L=60.000m	
432320.000	89.866	89.866	A=48000.000 L=60.000m	
432330.000	89.866	89.866	A=48000.000 L=60.000m	
432340.000	89.866	89.866	A=48000.000 L=60.000m	
432350.000	89.866	89.866	A=48000.000 L=60.000m	
432360.000	89.866	89.866	A=48000.000 L=60.000m	
432370.000	89.866	89.866	A=48000.000 L=60.000m	
432380.000	89.866	89.866	A=48000.000 L=60.000m	
432390.000	89.866	89.866	A=48000.000 L=60.000m	
432400.000	89.866	89.866	A=48000.000 L=60.000m	
432410.000	89.866	89.866	A=48000.000 L=60.000m	
432420.000	89.866	89.866	A=48000.000 L=60.000m	
432430.000	89.866	89.866	A=48000.000 L=60.000m	
432440.000	89.866	89.866	A=48000.000 L=60.000m	
432450.000	89.866	89.866	A=48000.000 L=60.000m	
432460.000	89.866	89.866	A=48000.000 L=60.000m	
432470.000	89.866	89.866	A=48000.000 L=60.000m	
432480.000	89.866	89.866	A=48000.000 L=60.000m	
432490.000	89.866	89.866	A=48000.000 L=60.000m	
432500.000	89.866	89.866	A=48000.000 L=60.000m	
432510.000	89.866	89.866	A=48000.000 L=60.000m	
432520.000	89.866	89.866	A=48000.000 L=60.000m	
432530.000	89.866	89.866	A=48000.000 L=60.000m	
432540.000	89.866	89.866	A=48000.000 L=60.000m	
432550.000	89.866	89.866	A=48000.000 L=60.000m	
432560.000	89.866	89.866	A=48000.000 L=60.000m	
432570.000	89.866	89.866	A=48000.000 L=60.000m	
432580.000	89.866	89.866	A=48000.000 L=60.000m	
432590.000	89.866	89.866	A=48000.000 L=60.000m	
432600.000	89.866	89.866	A=48000.000 L=60.000m	
432610.000	89.866	89.866	A=48000.000 L=60.000m	
432620.000	89.866	89.866	A=48000.000 L=60.000m	
432630.000	89.866	89.866	A=48000.000 L=60.000m	
432640.000	89.866	89.866	A=48000.000 L=60.000m	
432650.000	89.866	89.866	A=48000.000 L=60.000m	
432660.000	89.866	89.866	A=48000.000 L=60.000m	
432670.000	89.866	89.866	A=48000.000 L=60.000m	
432680.000	89.866	89.866	A=48000.000 L=60.000m	
432690.000	89.866	89.866	A=48000.000 L=60.000m	
432700.000	89.866	89.866	A=48000.000 L=60.000m	
432710.000	89.866	89.866	A=48000.000 L=60.000m	
432720.000	89.866	89.866	A=48000.000 L=60.000m	
432730.000	89.866	89.866	A=48000.000 L=60.000m	
432740.000	89.866	89.866	A=48000.000 L=60.000m	
432750.000	89.866	89.866	A=48000.000 L=60.000m	
432760.000	89.866	89.866	A=48000.000 L=60.000m	
432770.000	89.866	89.866	A=48000.000 L=60.000m	
432780.000	89.866	89.866	A=48000.000 L=60.000m	
432790.000	89.866	89.866	A=48000.000 L=60.000m	
432800.000	89.866	89.866	A=48000.000 L=60.000m	
432810.000	89.866	89.866	A=48000.000 L=60.000m	
432820.000	89.866	89.866	A=48000.000 L=60.000m	
432830.000	89.866	89.866	A=48000.000 L=60.000m	
432840.000	89.866	89.866	A=48000.000 L=60.000m	
432850.000	89.866	89.866	A=48000.000 L=60.000m	
432860.000	89.866	89.866	A=48000.000 L=60.000m	
432870.000	89.866	89.866	A=48000.000 L=60.000m	
432880.000	89.866	89.866	A=48000.000 L=60.000m	
432890.000	89.866	89.866	A=48000.000 L=60.000m	
432900.000	89.866	89.866	A=48000.000 L=60.000m	
432910.000	89.866	89.866	A=48000.000 L=60.000m	
432920.000	89.866	89.866	A=48000.000 L=60.000m	
432930.000	89.866	89.866	A=48000.000 L=60.000m	
432940.000	89.866	89.866	A=48000.000 L=60.000m	
432950.000	89.866	89.866	A=48000.000 L=60.000m	
432960.000	89.866	89.866	A=48000.000 L=60.000m	
432970.000	89.866	89.866	A=48000.000 L=60.000m	
432980.000	89.866	89.866	A=48000.000 L=60.000m	
432990.000	89.866	89.866	A=48000.000 L=60.000m	
433000.000	89.866	89.866	A=48000.000 L=60.000m	

CLIENT :  
  
**NATIONAL HIGHWAYS AND INFRASTRUCTURE DEVELOPMENT CORPORATION LTD.**  
 (MINISTRY OF ROAD TRANSPORT AND HIGHWAYS)  
 GOVERNMENT OF INDIA

PROJECT :  
**CONSULTANCY SERVICES FOR PREPARATION OF FEASIBILITY STUDY AND DETAILED PROJECT REPORT FOR UPGRADATION OF DERGAON TOWN SECTION OF NH-37 FROM KM 426.800 TO KM 437.800 IN THE STATE OF ASSAM**

DESIGN CONSULTANT:  
  
**VOYANTS SOLUTIONS PVT LTD.**  
 403, 4th Floor, Park Centra,  
 Sector-30, NH-8  
 Gurugram-122001, Haryana, India  
 CIN- U7140HR2004PTC046918  
 Ph: 0124-4598200, Fax: 0124-4019051,  
 E-mail: info@voyants.in, www.voyants.in

**Detailed Project Report**

DESIGNED BY: PD  
 DRAWN BY: SS  
 CHECKED BY: SD  
 APPROVED BY: SKC

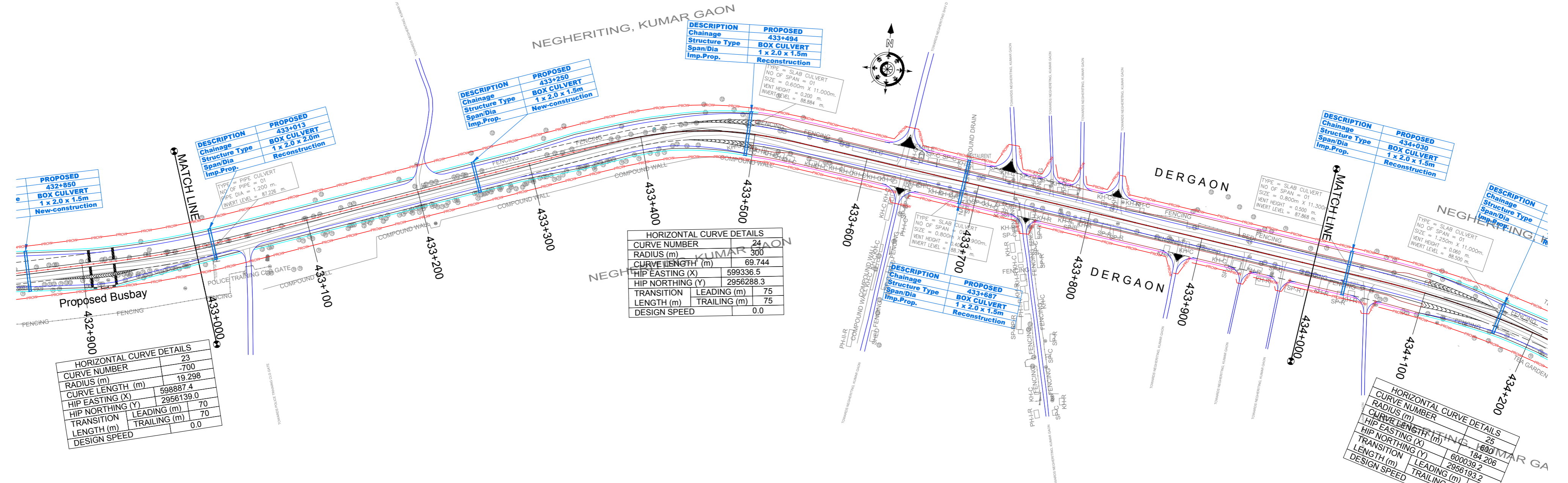
SCALE : 1:2500  
 SHEET SIZE: A2

TITLE :  
**Plan & Profile**  
 (km 432+000 to km 433+000)

DRG. No. :  
 VSPL/1718-081A/DERGAON/DPR/PP-06

REVISION: R1  
 NOVEMBER 2019

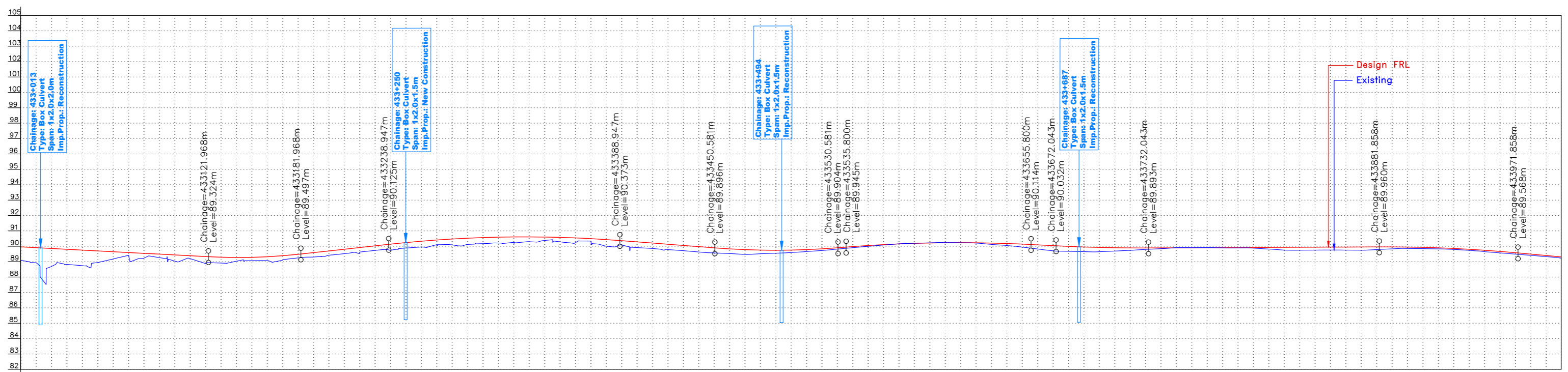
REV.	DATE	DESCRIPTION



HORIZONTAL CURVE DETAILS	
CURVE NUMBER	24
RADIUS (m)	300
CURVE LENGTH (m)	69.744
HIP EASTING (X)	599336.5
HIP NORTHING (Y)	2956288.3
TRANSITION LEADING (m)	75
LENGTH (m)	75
TRAILING (m)	75
DESIGN SPEED	0.0

HORIZONTAL CURVE DETAILS	
CURVE NUMBER	23
RADIUS (m)	19298
CURVE LENGTH (m)	598887.4
HIP EASTING (X)	2956139.0
HIP NORTHING (Y)	70
TRANSITION LEADING (m)	70
LENGTH (m)	70
TRAILING (m)	70
DESIGN SPEED	0.0


HORIZONTAL CURVE DETAILS	
CURVE NUMBER	25
RADIUS (m)	1600
CURVE LENGTH (m)	184.206
HIP EASTING (X)	600039.2
HIP NORTHING (Y)	2956193.2
TRANSITION LEADING (m)	75
LENGTH (m)	75
TRAILING (m)	75
DESIGN SPEED	0.0



Chainage	Design FRL	Existing	Horizontal	Vertical
433000.000	89.961	89.092	A=49000.000 L=70.000m	L=145.221m G=-0.523
433010.000	89.909	88.935		
433020.000	89.857	88.882	L=283.902m	R=3692.021m L=60.000m
433030.000	89.805	88.819		
433040.000	89.752	88.740	A=22500.000 L=75.000m	G=1.102 L=56.979m
433050.000	89.700	88.944		
433060.000	89.648	89.174	R=150.000m L=8000.795m	L=150.000m
433070.000	89.595	89.407		
433080.000	89.543	89.226	A=33444.926 L=75.000m	G=-0.773
433090.000	89.491	89.267		
433100.000	89.439	89.200	R=5116.053m L=80.000m	L=61.634m
433110.000	89.386	89.110		
433120.000	89.334	88.990	A=33444.926 L=75.000m	G=0.045 L=149.815m
433130.000	89.290	88.911		
433140.000	89.273	89.027	R=120.000m L=9233.741m	L=120.000m
433150.000	89.283	89.065		
433160.000	89.321	89.069	A=33444.926 L=75.000m	G=0.045
433170.000	89.385	89.101		
433180.000	89.476	89.242	R=90.000m L=69.744m	L=90.000m
433190.000	89.586	89.304		
433200.000	89.696	89.417	A=33444.926 L=75.000m	G=0.045
433210.000	89.806	89.520		
433220.000	89.917	89.600	R=300.000m L=69.744m	L=69.744m
433230.000	90.027	89.731		
433240.000	90.137	89.745	A=22500.000 L=75.000m	L=75.000m
433250.000	90.240	89.882		
433260.000	90.330	89.955	R=120.000m L=9233.741m	L=120.000m
433270.000	90.407	90.101		
433280.000	90.473	90.088	A=33444.926 L=75.000m	G=0.045
433290.000	90.525	90.116		
433300.000	90.565	90.171	R=5116.053m L=80.000m	L=80.000m
433310.000	90.593	90.211		
433320.000	90.608	90.252	A=33444.926 L=75.000m	G=0.045
433330.000	90.611	90.298		
433340.000	90.601	90.376	R=300.000m L=69.744m	L=69.744m
433350.000	90.579	90.291		
433360.000	90.544	90.226	A=22500.000 L=75.000m	L=75.000m
433370.000	90.496	90.337		
433380.000	90.437	90.005	R=120.000m L=9233.741m	L=120.000m
433390.000	90.364	90.088		
433400.000	90.287	90.916	A=33444.926 L=75.000m	G=0.045
433410.000	90.210	89.855		
433420.000	90.133	89.787	R=5116.053m L=80.000m	L=80.000m
433430.000	90.055	89.715		
433440.000	89.978	89.632	A=33444.926 L=75.000m	G=0.045
433450.000	89.901	89.570		
433460.000	89.832	89.528	R=300.000m L=69.744m	L=69.744m
433470.000	89.754	89.474		
433480.000	89.675	89.595	A=22500.000 L=75.000m	L=75.000m
433490.000	89.595	89.595		
433500.000	89.512	89.552	R=120.000m L=9233.741m	L=120.000m
433510.000	89.428	89.656		
433520.000	89.351	89.728	A=33444.926 L=75.000m	G=0.045
433530.000	89.285	89.805		
433540.000	89.215	89.895	R=5116.053m L=80.000m	L=80.000m
433550.000	90.046	89.977		
433560.000	90.105	89.997	A=33444.926 L=75.000m	G=0.045
433570.000	90.152	90.078		
433580.000	90.181	90.152	R=300.000m L=69.744m	L=69.744m
433590.000	90.203	90.189		
433600.000	90.215	90.215	A=22500.000 L=75.000m	L=75.000m
433610.000	90.230	90.230		
433620.000	90.227	90.209	R=120.000m L=9233.741m	L=120.000m
433630.000	90.210	90.120		
433640.000	90.181	90.051	A=33444.926 L=75.000m	G=0.045
433650.000	90.142	89.949		
433660.000	90.093	89.825	R=5116.053m L=80.000m	L=80.000m
433670.000	90.042	89.705		
433680.000	89.994	89.672	A=33444.926 L=75.000m	G=0.045
433690.000	89.955	89.652		
433700.000	89.926	89.647	R=300.000m L=69.744m	L=69.744m
433710.000	89.905	89.691		
433720.000	89.894	89.736	A=22500.000 L=75.000m	L=75.000m
433730.000	89.892	89.794		
433740.000	89.896	89.842	R=120.000m L=9233.741m	L=120.000m
433750.000	89.901	89.914		
433760.000	89.905	89.913	A=33444.926 L=75.000m	G=0.045
433770.000	89.910	89.918		
433780.000	89.914	89.900	R=5116.053m L=80.000m	L=80.000m
433790.000	89.919	89.895		
433800.000	89.923	89.879	A=33444.926 L=75.000m	G=0.045
433810.000	89.928	89.821		
433820.000	89.932	89.755	R=300.000m L=69.744m	L=69.744m
433830.000	89.937	89.744		
433840.000	89.941	89.753	A=22500.000 L=75.000m	L=75.000m
433850.000	89.946	89.758		
433860.000	89.950	89.754	R=120.000m L=9233.741m	L=120.000m
433870.000	89.955	89.746		
433880.000	89.959	89.785	A=33444.926 L=75.000m	G=0.045
433890.000	89.960	89.833		
433900.000	89.950	89.860	R=5116.053m L=80.000m	L=80.000m
433910.000	89.930	89.846		
433920.000	89.899	89.832	A=33444.926 L=75.000m	G=0.045
433930.000	89.858	89.794		
433940.000	89.806	89.735	R=300.000m L=69.744m	L=69.744m
433950.000	89.743	89.651		
433960.000	89.669	89.571	A=22500.000 L=75.000m	L=75.000m
433970.000	89.585	89.493		
433980.000	89.493	89.413	R=120.000m L=9233.741m	L=120.000m
433990.000	89.402	89.331		
434000.000	89.310	89.250		

Path: F:\V.O.\Project\Work\1718-081\Bharatima\_2\2019\Dergaon\December 2019\16\_Plan & Profile\Sheet\_Dergaon.dwg

CLIENT :



**NATIONAL HIGHWAYS AND INFRASTRUCTURE DEVELOPMENT CORPORATION LTD.**  
(MINISTRY OF ROAD TRANSPORT AND HIGHWAYS)  
GOVERNMENT OF INDIA

PROJECT :

**CONSULTANCY SERVICES FOR PREPARATION OF FEASIBILITY STUDY AND DETAILED PROJECT REPORT FOR UPGRADATION OF DERGAON TOWN SECTION OF NH-37 FROM KM 426.800 TO KM 437.800 IN THE STATE OF ASSAM**

DESIGN CONSULTANT:



**VOYANTS SOLUTIONS PVT LTD.**  
403, 4th Floor, Park Centra,  
Sector-30, NH-8  
Gurugram-122001, Haryana, India  
CIN: U7140HR2004PTC046918  
Ph: 0124-4598200, Fax: 0124-4019051,  
E-mail: info@voyants.in, www.voyants.in

**Detailed Project Report**

DESIGNED BY	DRAWN BY	CHECKED BY	APPROVED BY
PD	SS	SD	SKC

SCALE : 1:2500 SHEET SIZE A2

REV.	DATE	DESCRIPTION

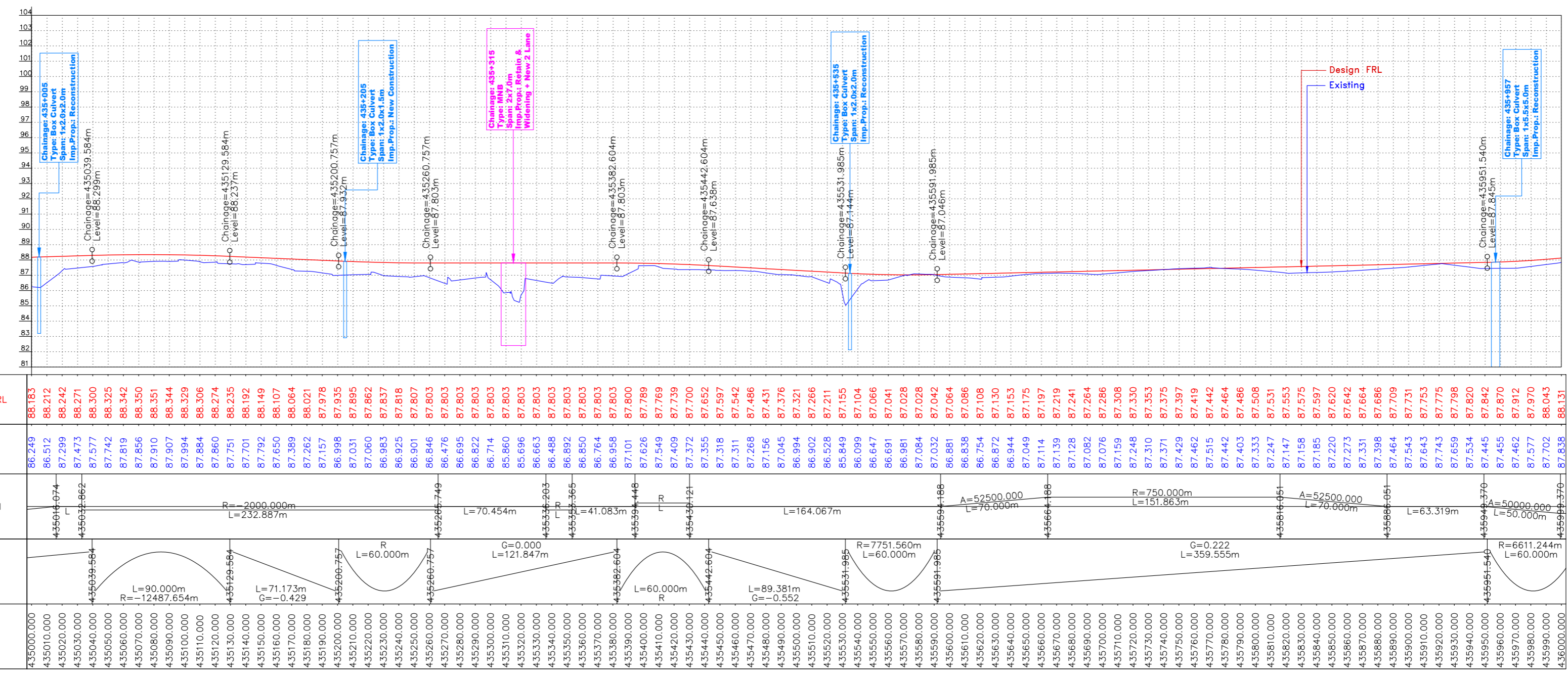
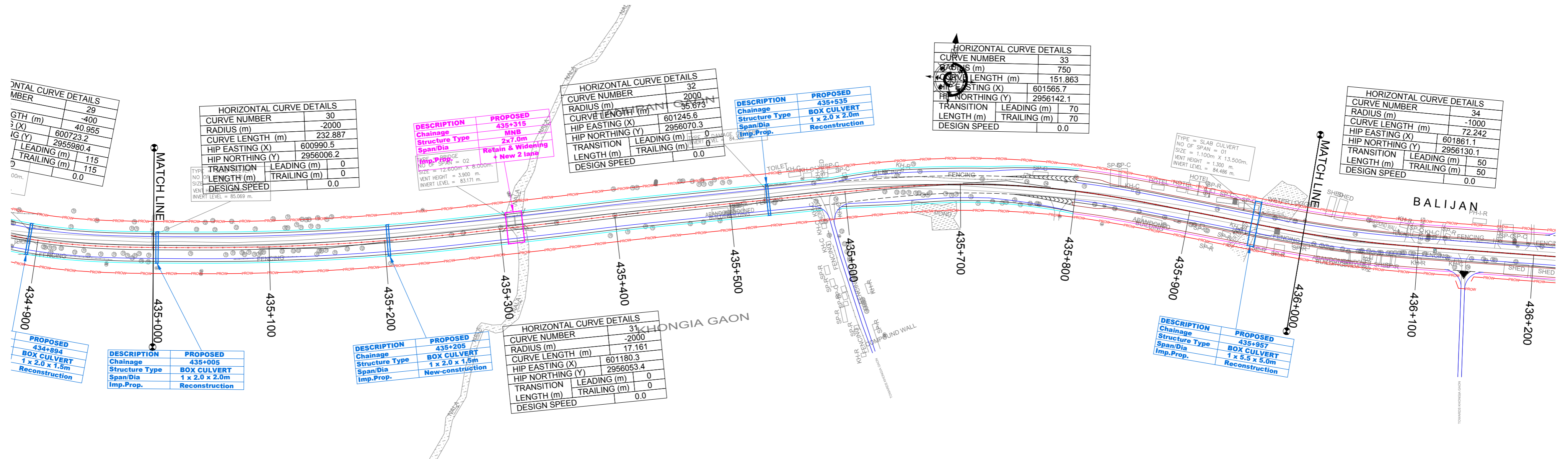
TITLE :

**Plan & Profile**  
(km 433+000 to km 434+000)

DRG. No. : VSPL/1718-081A/DERGAON/DPR/PP-07

REVISION:R1 NOVEMBER 2019

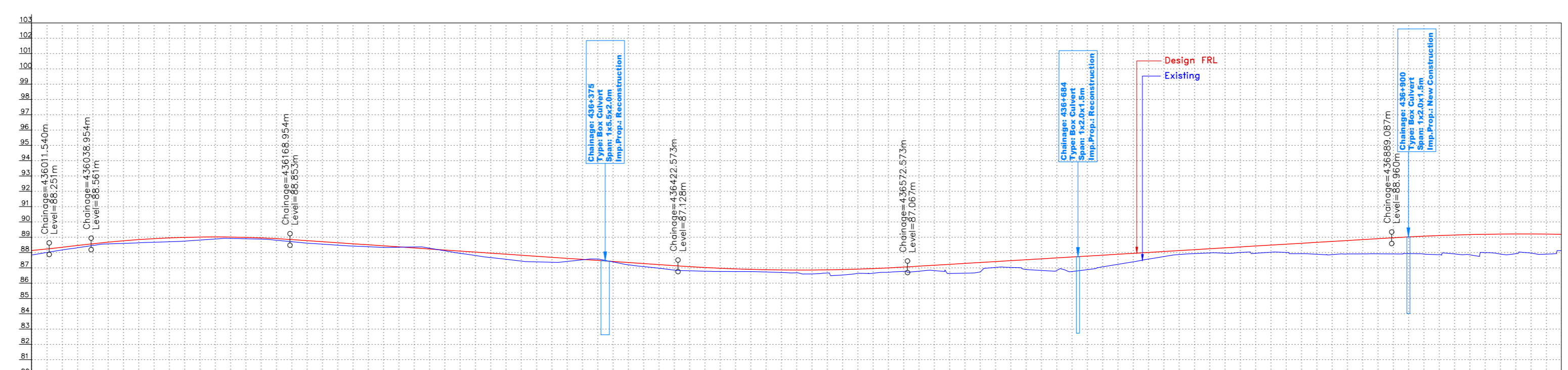
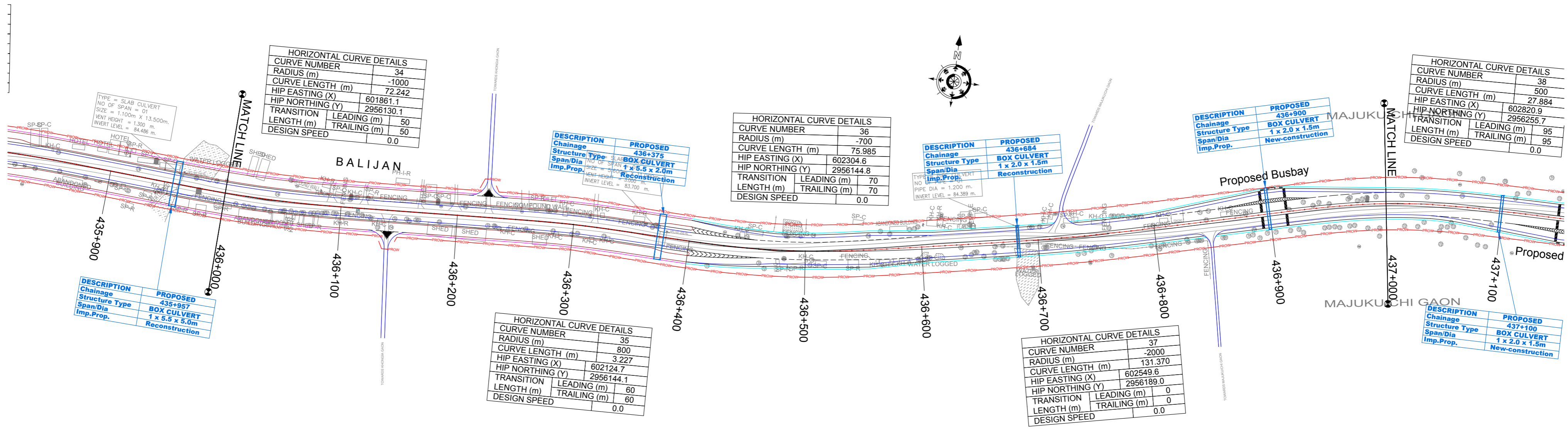




Station	Design FRL	Existing	Horizontal	Vertical	Chainage
435000.000	88.183	86.249			435000.000
435010.000	88.212	86.512			435010.000
435020.000	88.242	87.299			435020.000
435030.000	88.271	87.473			435030.000
435040.000	88.300	87.577			435040.000
435050.000	88.325	87.742			435050.000
435060.000	88.348	87.819			435060.000
435070.000	88.350	87.856			435070.000
435080.000	88.351	87.910			435080.000
435090.000	88.344	87.997			435090.000
435100.000	88.329	87.998			435100.000
435110.000	88.308	87.884			435110.000
435120.000	88.274	87.860			435120.000
435130.000	88.235	87.751			435130.000
435140.000	88.192	87.702			435140.000
435150.000	88.107	87.650			435150.000
435160.000	88.064	87.389			435160.000
435170.000	88.026	87.262			435170.000
435180.000	87.988	87.157			435180.000
435190.000	87.935	86.998			435190.000
435200.000	87.879	86.901			435200.000
435210.000	87.831	86.703			435210.000
435220.000	87.788	86.588			435220.000
435230.000	87.748	86.537			435230.000
435240.000	87.716	86.525			435240.000
435250.000	87.687	86.501			435250.000
435260.000	87.658	86.476			435260.000
435270.000	87.630	86.452			435270.000
435280.000	87.603	86.428			435280.000
435290.000	87.578	86.403			435290.000
435300.000	87.554	86.378			435300.000
435310.000	87.531	86.353			435310.000
435320.000	87.509	86.328			435320.000
435330.000	87.488	86.303			435330.000
435340.000	87.468	86.278			435340.000
435350.000	87.449	86.253			435350.000
435360.000	87.431	86.228			435360.000
435370.000	87.414	86.203			435370.000
435380.000	87.398	86.178			435380.000
435390.000	87.383	86.153			435390.000
435400.000	87.368	86.128			435400.000
435410.000	87.354	86.103			435410.000
435420.000	87.341	86.078			435420.000
435430.000	87.329	86.053			435430.000
435440.000	87.318	86.028			435440.000
435450.000	87.308	86.003			435450.000
435460.000	87.299	85.978			435460.000
435470.000	87.291	85.953			435470.000
435480.000	87.284	85.928			435480.000
435490.000	87.278	85.903			435490.000
435500.000	87.273	85.878			435500.000
435510.000	87.269	85.853			435510.000
435520.000	87.266	85.828			435520.000
435530.000	87.264	85.803			435530.000
435540.000	87.263	85.778			435540.000
435550.000	87.263	85.753			435550.000
435560.000	87.264	85.728			435560.000
435570.000	87.266	85.703			435570.000
435580.000	87.269	85.678			435580.000
435590.000	87.273	85.653			435590.000
435600.000	87.278	85.628			435600.000
435610.000	87.284	85.603			435610.000
435620.000	87.291	85.578			435620.000
435630.000	87.299	85.553			435630.000
435640.000	87.308	85.528			435640.000
435650.000	87.318	85.503			435650.000
435660.000	87.329	85.478			435660.000
435670.000	87.341	85.453			435670.000
435680.000	87.354	85.428			435680.000
435690.000	87.368	85.403			435690.000
435700.000	87.383	85.378			435700.000
435710.000	87.398	85.353			435710.000
435720.000	87.414	85.328			435720.000
435730.000	87.431	85.303			435730.000
435740.000	87.449	85.278			435740.000
435750.000	87.468	85.253			435750.000
435760.000	87.488	85.228			435760.000
435770.000	87.509	85.203			435770.000
435780.000	87.531	85.178			435780.000
435790.000	87.554	85.153			435790.000
435800.000	87.578	85.128			435800.000
435810.000	87.603	85.103			435810.000
435820.000	87.629	85.078			435820.000
435830.000	87.654	85.053			435830.000
435840.000	87.680	85.028			435840.000
435850.000	87.707	85.003			435850.000
435860.000	87.734	84.978			435860.000
435870.000	87.762	84.953			435870.000
435880.000	87.791	84.928			435880.000
435890.000	87.821	84.903			435890.000
435900.000	87.852	84.878			435900.000
435910.000	87.884	84.853			435910.000
435920.000	87.917	84.828			435920.000
435930.000	87.951	84.803			435930.000
435940.000	87.986	84.778			435940.000
435950.000	88.022	84.753			435950.000
435960.000	88.059	84.728			435960.000
435970.000	88.100	84.703			435970.000
435980.000	88.143	84.678			435980.000
435990.000	88.189	84.653			435990.000
436000.000	88.237	84.628			436000.000

CLIENT :  <b>NATIONAL HIGHWAYS AND INFRASTRUCTURE DEVELOPMENT CORPORATION LTD.</b> (MINISTRY OF ROAD TRANSPORT AND HIGHWAYS) GOVERNMENT OF INDIA	PROJECT : <b>CONSULTANCY SERVICES FOR PREPARATION OF FEASIBILITY STUDY AND DETAILED PROJECT REPORT FOR UPGRADATION OF DERGAON TOWN SECTION OF NH-37 FROM KM 426.800 TO KM 437.800 IN THE STATE OF ASSAM</b>	DESIGN CONSULTANT:  <b>VOYANTS SOLUTIONS PVT LTD.</b> 403, 4th Floor, Park Centra, Sector-30, NH-8, Gurugram-122001, Haryana, India CIN: U71410HR2004PTC046918 Ph: 0124-4598200, Fax: 0124-4019051, E-mail: info@voyants.in, www.voyants.in	<b>Detailed Project Report</b>				DESIGNED BY PD	DRAWN BY SS	CHECKED BY SD	APPROVED BY SKC	TITLE : <b>Plan &amp; Profile</b> (km 435+000 to km 436+000)
			SCALE : 1:2500	SHEET SIZE A2	DRG. No. : VSPL/1718-081A/DERGAON/DPR/PP-09	REVISION:R1	NOVEMBER 2019				

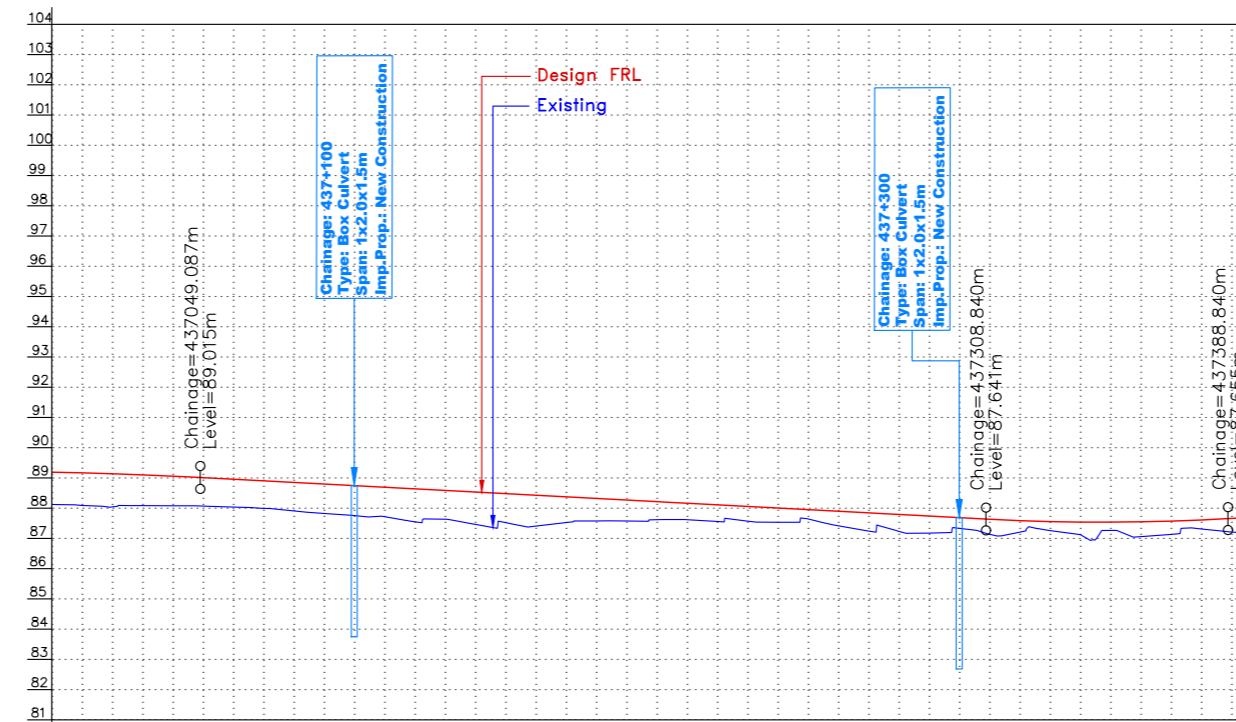
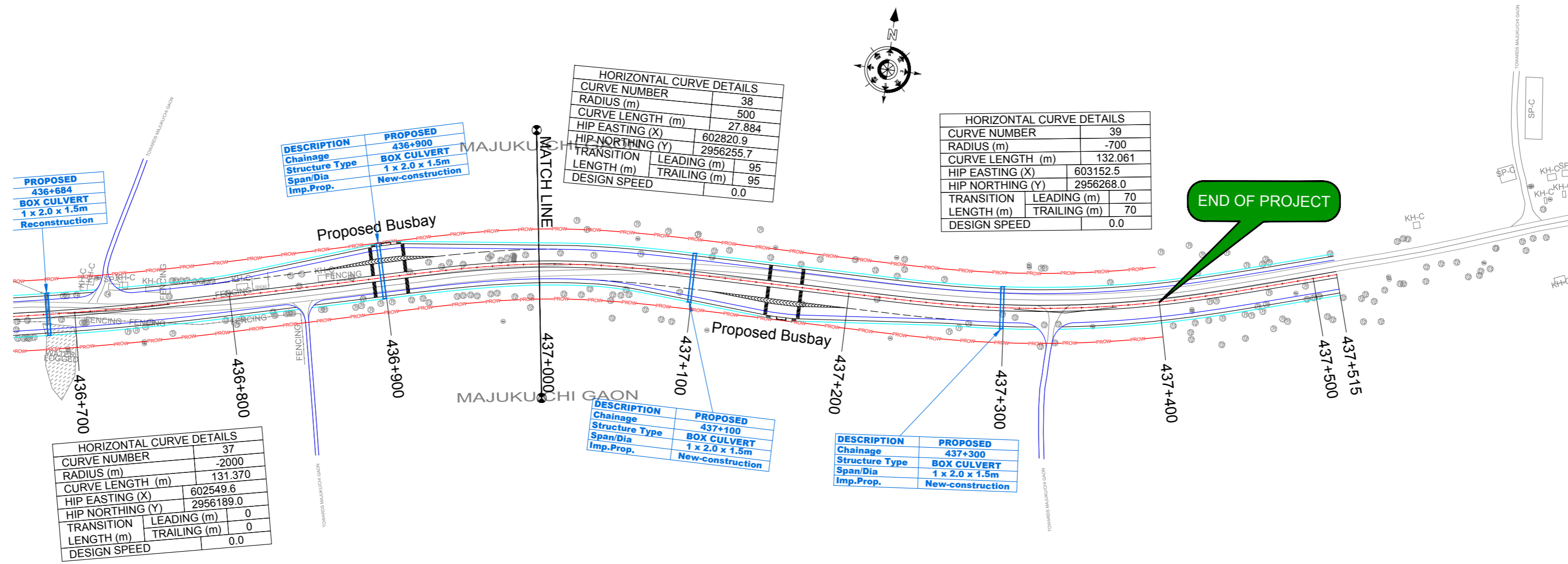
Path: F:\V.O.-Project\Work\1718-081-Deragaon\2019\1718-081-Deragaon\December 2019\1718-081-Deragaon\Sheet-Dergaon.dwg



Station	Design FRL	Existing	Horizontal	Vertical	Chainage
436000.000	88.151	87.838			436000.000
436010.000	88.234	88.006			436010.000
436020.000	88.347	88.171			436020.000
436030.000	88.498	88.310			436030.000
436040.000	88.673	88.461			436040.000
436050.000	88.877	88.565			436050.000
436060.000	89.100	88.800			436060.000
436070.000	89.348	89.068			436070.000
436080.000	89.617	89.357			436080.000
436090.000	89.906	89.666			436090.000
436100.000	90.215	89.995			436100.000
436110.000	90.544	90.344			436110.000
436120.000	90.893	90.713			436120.000
436130.000	91.262	91.102			436130.000
436140.000	91.651	91.511			436140.000
436150.000	92.060	91.940			436150.000
436160.000	92.489	92.389			436160.000
436170.000	92.938	92.858			436170.000
436180.000	93.407	93.347			436180.000
436190.000	93.896	93.856			436190.000
436200.000	94.405	94.385			436200.000
436210.000	94.934	94.934			436210.000
436220.000	95.483	95.503			436220.000
436230.000	96.052	96.092			436230.000
436240.000	96.641	96.701			436240.000
436250.000	97.250	97.330			436250.000
436260.000	97.879	97.939			436260.000
436270.000	98.528	98.568			436270.000
436280.000	99.197	99.217			436280.000
436290.000	99.886	99.886			436290.000
436300.000	100.595	100.595			436300.000
436310.000	101.324	101.324			436310.000
436320.000	102.073	102.073			436320.000
436330.000	102.842	102.842			436330.000
436340.000	103.631	103.631			436340.000
436350.000	104.440	104.440			436350.000
436360.000	105.269	105.269			436360.000
436370.000	106.118	106.118			436370.000
436380.000	106.987	106.987			436380.000
436390.000	107.876	107.876			436390.000
436400.000	108.785	108.785			436400.000
436410.000	109.714	109.714			436410.000
436420.000	110.663	110.663			436420.000
436430.000	111.632	111.632			436430.000
436440.000	112.621	112.621			436440.000
436450.000	113.630	113.630			436450.000
436460.000	114.659	114.659			436460.000
436470.000	115.708	115.708			436470.000
436480.000	116.777	116.777			436480.000
436490.000	117.866	117.866			436490.000
436500.000	118.975	118.975			436500.000
436510.000	120.104	120.104			436510.000
436520.000	121.253	121.253			436520.000
436530.000	122.422	122.422			436530.000
436540.000	123.611	123.611			436540.000
436550.000	124.820	124.820			436550.000
436560.000	126.049	126.049			436560.000
436570.000	127.298	127.298			436570.000
436580.000	128.567	128.567			436580.000
436590.000	129.856	129.856			436590.000
436600.000	131.165	131.165			436600.000
436610.000	132.494	132.494			436610.000
436620.000	133.843	133.843			436620.000
436630.000	135.212	135.212			436630.000
436640.000	136.601	136.601			436640.000
436650.000	138.010	138.010			436650.000
436660.000	139.439	139.439			436660.000
436670.000	140.888	140.888			436670.000
436680.000	142.357	142.357			436680.000
436690.000	143.846	143.846			436690.000
436700.000	145.355	145.355			436700.000
436710.000	146.884	146.884			436710.000
436720.000	148.433	148.433			436720.000
436730.000	150.002	150.002			436730.000
436740.000	151.591	151.591			436740.000
436750.000	153.200	153.200			436750.000
436760.000	154.829	154.829			436760.000
436770.000	156.478	156.478			436770.000
436780.000	158.147	158.147			436780.000
436790.000	159.836	159.836			436790.000
436800.000	161.545	161.545			436800.000
436810.000	163.274	163.274			436810.000
436820.000	165.023	165.023			436820.000
436830.000	166.792	166.792			436830.000
436840.000	168.581	168.581			436840.000
436850.000	170.390	170.390			436850.000
436860.000	172.219	172.219			436860.000
436870.000	174.068	174.068			436870.000
436880.000	175.937	175.937			436880.000
436890.000	177.826	177.826			436890.000
436900.000	179.735	179.735			436900.000
436910.000	181.664	181.664			436910.000
436920.000	183.613	183.613			436920.000
436930.000	185.582	185.582			436930.000
436940.000	187.571	187.571			436940.000
436950.000	189.580	189.580			436950.000
436960.000	191.609	191.609			436960.000
436970.000	193.658	193.658			436970.000
436980.000	195.727	195.727			436980.000
436990.000	197.816	197.816			436990.000
437000.000	199.925	199.925			437000.000

CLIENT :  <b>NATIONAL HIGHWAYS AND INFRASTRUCTURE DEVELOPMENT CORPORATION LTD.</b> (MINISTRY OF ROAD TRANSPORT AND HIGHWAYS) GOVERNMENT OF INDIA	PROJECT : <b>CONSULTANCY SERVICES FOR PREPARATION OF FEASIBILITY STUDY AND DETAILED PROJECT REPORT FOR UPGRADATION OF DERGAON TOWN SECTION OF NH-37 FROM KM 426.800 TO KM 437.800 IN THE STATE OF ASSAM</b>	DESIGN CONSULTANT:  <b>VOYANTS SOLUTIONS PVT LTD.</b> 403, 4th Floor, Park Centra, Sector-30, NH-8 Gurugram-122001, Haryana, India CIN: U7140HR2004PTC046918 Ph: 0124-4598200, Fax: 0124-4019051, E-mail: info@voyants.in, www.voyants.in	<b>Detailed Project Report</b>				DESIGNED BY	DRAWN BY	CHECKED BY	APPROVED BY	TITLE :
			PD	SS	SD	SKC	<b>Plan &amp; Profile</b> (km 436+000 to km 437+000)				
SCALE : 1:2500		SHEET SIZE : A2		DRG. No. : VSPL/1718-081A/DERGAON/DPR/PP-10		REVISION: R1		NOVEMBER 2019			

Path: F:\V.O.\_Project\Work\1718-081 -Bharatmeesa\_2\1019\Dergaon\December 2019\16\_Plan & Profile\Sheet\_Dergaon.dwg



Design FRL	89.190	89.168	89.139	89.103	89.060	89.010	88.957	88.904	88.851	88.798	88.745	88.693	88.640	88.587	88.534	88.481	88.428	88.375	88.322	88.269	88.216	88.163	88.111	88.058	88.005	87.952	87.899	87.846	87.793	87.740	87.687	87.635	87.582	87.529	87.476	87.423	87.370	87.317	87.264	87.211	87.158	87.105	87.052	86.999	86.946	86.893	86.840	86.787	86.734	86.681	86.628	86.575	86.522	86.469	86.416	86.363	86.310	86.257	86.204	86.151	86.098	86.045	85.992	85.939	85.886	85.833	85.780	85.727	85.674	85.621	85.568	85.515	85.462	85.409	85.356	85.303	85.250	85.197	85.144	85.091	85.038	84.985	84.932	84.879	84.826	84.773	84.720	84.667	84.614	84.561	84.508	84.455	84.402	84.349	84.296	84.243	84.190	84.137	84.084	84.031	83.978	83.925	83.872	83.819	83.766	83.713	83.660	83.607	83.554	83.501	83.448	83.395	83.342	83.289	83.236	83.183	83.130	83.077	83.024	82.971	82.918	82.865	82.812	82.759	82.706	82.653	82.600	82.547	82.494	82.441	82.388	82.335	82.282	82.229	82.176	82.123	82.070	82.017	81.964	81.911	81.858	81.805	81.752	81.699	81.646	81.593	81.540	81.487	81.434	81.381	81.328	81.275	81.222	81.169	81.116	81.063	81.010	80.957	80.904	80.851	80.798	80.745	80.692	80.639	80.586	80.533	80.480	80.427	80.374	80.321	80.268	80.215	80.162	80.109	80.056	80.003	79.950	79.897	79.844	79.791	79.738	79.685	79.632	79.579	79.526	79.473	79.420	79.367	79.314	79.261	79.208	79.155	79.102	79.049	78.996	78.943	78.890	78.837	78.784	78.731	78.678	78.625	78.572	78.519	78.466	78.413	78.360	78.307	78.254	78.201	78.148	78.095	78.042	77.989	77.936	77.883	77.830	77.777	77.724	77.671	77.618	77.565	77.512	77.459	77.406	77.353	77.300	77.247	77.194	77.141	77.088	77.035	76.982	76.929	76.876	76.823	76.770	76.717	76.664	76.611	76.558	76.505	76.452	76.399	76.346	76.293	76.240	76.187	76.134	76.081	76.028	75.975	75.922	75.869	75.816	75.763	75.710	75.657	75.604	75.551	75.498	75.445	75.392	75.339	75.286	75.233	75.180	75.127	75.074	75.021	74.968	74.915	74.862	74.809	74.756	74.703	74.650	74.597	74.544	74.491	74.438	74.385	74.332	74.279	74.226	74.173	74.120	74.067	74.014	73.961	73.908	73.855	73.802	73.749	73.696	73.643	73.590	73.537	73.484	73.431	73.378	73.325	73.272	73.219	73.166	73.113	73.060	73.007	72.954	72.901	72.848	72.795	72.742	72.689	72.636	72.583	72.530	72.477	72.424	72.371	72.318	72.265	72.212	72.159	72.106	72.053	71.900	71.847	71.794	71.741	71.688	71.635	71.582	71.529	71.476	71.423	71.370	71.317	71.264	71.211	71.158	71.105	71.052	70.999	70.946	70.893	70.840	70.787	70.734	70.681	70.628	70.575	70.522	70.469	70.416	70.363	70.310	70.257	70.204	70.151	70.098	70.045	79.992	79.939	79.886	79.833	79.780	79.727	79.674	79.621	79.568	79.515	79.462	79.409	79.356	79.303	79.250	79.197	79.144	79.091	79.038	78.985	78.932	78.879	78.826	78.773	78.720	78.667	78.614	78.561	78.508	78.455	78.402	78.349	78.296	78.243	78.190	78.137	78.084	78.031	77.978	77.925	77.872	77.819	77.766	77.713	77.660	77.607	77.554	77.501	77.448	77.395	77.342	77.289	77.236	77.183	77.130	77.077	77.024	76.971	76.918	76.865	76.812	76.759	76.706	76.653	76.600	76.547	76.494	76.441	76.388	76.335	76.282	76.229	76.176	76.123	76.070	76.017	75.964	75.911	75.858	75.805	75.752	75.699	75.646	75.593	75.540	75.487	75.434	75.381	75.328	75.275	75.222	75.169	75.116	75.063	75.010	74.957	74.904	74.851	74.798	74.745	74.692	74.639	74.586	74.533	74.480	74.427	74.374	74.321	74.268	74.215	74.162	74.109	74.056	74.003	73.950	73.897	73.844	73.791	73.738	73.685	73.632	73.579	73.526	73.473	73.420	73.367	73.314	73.261	73.208	73.155	73.102	73.049	72.996	72.943	72.890	72.837	72.784	72.731	72.678	72.625	72.572	72.519	72.466	72.413	72.360	72.307	72.254	72.201	72.148	72.095	72.042	71.989	71.936	71.883	71.830	71.777	71.724	71.671	71.618	71.565	71.512	71.459	71.406	71.353	71.300	71.247	71.194	71.141	71.088	71.035	70.982	70.929	70.876	70.823	70.770	70.717	70.664	70.611	70.558	70.505	70.452	70.399	70.346	70.293	70.240	70.187	70.134	70.081	70.028	79.975	79.922	79.869	79.816	79.763	79.710	79.657	79.604	79.551	79.498	79.445	79.392	79.339	79.286	79.233	79.180	79.127	79.074	79.021	78.968	78.915	78.862	78.809	78.756	78.703	78.650	78.597	78.544	78.491	78.438	78.385	78.332	78.279	78.226	78.173	78.120	78.067	78.014	77.961	77.908	77.855	77.802	77.749	77.696	77.643	77.590	77.537	77.484	77.431	77.378	77.325	77.272	77.219	77.166	77.113	77.060	77.007	76.954	76.901	76.848	76.795	76.742	76.689	76.636	76.583	76.530	76.477	76.424	76.371	76.318	76.265	76.212	76.159	76.106	76.053	75.900	75.847	75.794	75.741	75.688	75.635	75.582	75.529	75.476	75.423	75.370	75.317	75.264	75.211	75.158	75.105	75.052	74.999	74.946	74.893	74.840	74.787	74.734	74.681	74.628	74.575	74.522	74.469	74.416	74.363	74.310	74.257	74.204	74.151	74.098	74.045	73.992	73.939	73.886	73.833	73.780	73.727	73.674	73.621	73.568	73.515	73.462	73.409	73.356	73.303	73.250	73.197	73.144	73.091	73.038	72.985	72.932	72.879	72.826	72.773	72.720	72.667	72.614	72.561	72.508	72.455	72.402	72.349	72.296	72.243	72.190	72.137	72.084	72.031	71.978	71.925	71.872	71.819	71.766	71.713	71.660	71.607	71.554	71.501	71.448	71.395	71.342	71.289	71.236	71.183	71.130	71.077	71.024	70.971	70.918	70.865	70.812	70.759	70.706	70.653	70.600	70.547	70.494	70.441	70.388	70.335	70.282	70.229	70.176	70.123	70.070	70.017	79.964	79.911	79.858	79.805	79.752	79.699	79.646	79.593	79.540	79.487	79.434	79.381	79.328	79.275	79.222	79.169	79.116	79.063	79.010	78.957	78.904	78.851	78.798	78.745	78.692	78.639	78.586	78.533	78.480	78.427	78.374	78.321	78.268	78.215	78.162	78.109	78.056	78.003	77.950	77.897	77.844	77.791	77.738	77.685	77.632	77.579	77.526	77.473	77.420	77.367	77.314	77.261	77.208	77.155	77.102	77.049	76.996	76.943	76.890	76.837	76.784	76.731	76.678	76.625	76.572	76.519	76.466	76.413	76.360	76.307	76.254	76.201	76.148	76.095	76.042	75.989	75.936	75.883	75.830	75.777	75.724	75.671	75.618	75.565	75.512	75.459	75.406	75.353	75.300	75.247	75.194	75.141	75.088	75.035	74.982	74.929	74.876	74.823	74.770	74.717	74.664	74.611	74.558	74.505	74.452	74.399	74.346	74.293	74.240	74.187	74.134	74.081	74.028	73.975	73.922	73.869	73.816	73.763	73.710	73.657	73.604	73.551	73.498	73.445	73.392	73.339	73.286	73.233	73.180	73.127	73.074	73.021	72.968	72.915	72.862	72.809	72.756	72.703	72.650	72.597	72.544	72.491	72.438	72.385	72.332	72.279	72.226	72.173	72.120	72.067	72.014	71.961	71.908	71.855	71.802	71.749	71.696	71.643	71.590	71.537	71.484	71.431	71.378	71.325	71.272	71.219	71.166	71.113	71.060	71.007	70.954	70.901	70.848	70.795	70.742	70.689	70.636	70.583	70.530	70.477	70.424	70.371	70.318	70.265	70.212	70.159	70.106	70.053	79.900	79.847	79.794	79.741	79.688	79.635	79.582	79.529	79.476	79.423	79.370	79.317	79.264	79.211	79.158	79.105	79.052	78.999	78.946	78.893	78.840	78.787	78.734	78.681	78.628	78.575	78.522	78.469	78.416	78.363	78.310	78.257	78.204	78.151	78.098	78.045	77.992	77.939	77.886	77.833	77.780	77.727	77.674	77.621	77.568	77.515	77.462	77.409	77.356	77.303	77.250	77.197	77.144	77.091	77.038	76.985	76.932	76.879	76.826	76.773	76.720	76.667	76.614	76.561	76.508	76.455	76.402	76.349	76.296	76.243	76.190	76.137	76.084	76.031	75.978	75.925	75.872	75.819	75.766	75.713	75.660	75.607	75.554	75.501	75.448	75.395	75.342	75.289	75.236	75.183	75.130	75.077	75.024	74.971	74.918	74.865	74.812	74.759	74.706	74.653	74.600	74.547	74.494	74.441	74.388	74.335	74.282	74.229	74.176	74.123	74.070	74.017	73.964	73.911	73.858	73.805	73.752	73.699	73.646	73.593	73.540	73.487	73.434	73.381	73.328	73.275	73.222	73.169	73.116	73.063	73.010	72.957	72.904	72.851	72.798	72.745	72.692	72.639	72.586	72.533	72.480	72.427	72.374	72.321	72.268	72.215	72.162	72.109	72.056	72.003	71.950	71.897	71.844	71.791
------------	--------	--------	--------	--------	--------	--------	--------	--------	--------	--------	--------	--------	--------	--------	--------	--------	--------	--------	--------	--------	--------	--------	--------	--------	--------	--------	--------	--------	--------	--------	--------	--------	--------	--------	--------	--------	--------	--------	--------	--------	--------	--------	--------	--------	--------	--------	--------	--------	--------	--------	--------	--------	--------	--------	--------	--------	--------	--------	--------	--------	--------	--------	--------	--------	--------	--------	--------	--------	--------	--------	--------	--------	--------	--------	--------	--------	--------	--------	--------	--------	--------	--------	--------	--------	--------	--------	--------	--------	--------	--------	--------	--------	--------	--------	--------	--------	--------	--------	--------	--------	--------	--------	--------	--------	--------	--------	--------	--------	--------	--------	--------	--------	--------	--------	--------	--------	--------	--------	--------	--------	--------	--------	--------	--------	--------	--------	--------	--------	--------	--------	--------	--------	--------	--------	--------	--------	--------	--------	--------	--------	--------	--------	--------	--------	--------	--------	--------	--------	--------	--------	--------	--------	--------	--------	--------	--------	--------	--------	--------	--------	--------	--------	--------	--------	--------	--------	--------	--------	--------	--------	--------	--------	--------	--------	--------	--------	--------	--------	--------	--------	--------	--------	--------	--------	--------	--------	--------	--------	--------	--------	--------	--------	--------	--------	--------	--------	--------	--------	--------	--------	--------	--------	--------	--------	--------	--------	--------	--------	--------	--------	--------	--------	--------	--------	--------	--------	--------	--------	--------	--------	--------	--------	--------	--------	--------	--------	--------	--------	--------	--------	--------	--------	--------	--------	--------	--------	--------	--------	--------	--------	--------	--------	--------	--------	--------	--------	--------	--------	--------	--------	--------	--------	--------	--------	--------	--------	--------	--------	--------	--------	--------	--------	--------	--------	--------	--------	--------	--------	--------	--------	--------	--------	--------	--------	--------	--------	--------	--------	--------	--------	--------	--------	--------	--------	--------	--------	--------	--------	--------	--------	--------	--------	--------	--------	--------	--------	--------	--------	--------	--------	--------	--------	--------	--------	--------	--------	--------	--------	--------	--------	--------	--------	--------	--------	--------	--------	--------	--------	--------	--------	--------	--------	--------	--------	--------	--------	--------	--------	--------	--------	--------	--------	--------	--------	--------	--------	--------	--------	--------	--------	--------	--------	--------	--------	--------	--------	--------	--------	--------	--------	--------	--------	--------	--------	--------	--------	--------	--------	--------	--------	--------	--------	--------	--------	--------	--------	--------	--------	--------	--------	--------	--------	--------	--------	--------	--------	--------	--------	--------	--------	--------	--------	--------	--------	--------	--------	--------	--------	--------	--------	--------	--------	--------	--------	--------	--------	--------	--------	--------	--------	--------	--------	--------	--------	--------	--------	--------	--------	--------	--------	--------	--------	--------	--------	--------	--------	--------	--------	--------	--------	--------	--------	--------	--------	--------	--------	--------	--------	--------	--------	--------	--------	--------	--------	--------	--------	--------	--------	--------	--------	--------	--------	--------	--------	--------	--------	--------	--------	--------	--------	--------	--------	--------	--------	--------	--------	--------	--------	--------	--------	--------	--------	--------	--------	--------	--------	--------	--------	--------	--------	--------	--------	--------	--------	--------	--------	--------	--------	--------	--------	--------	--------	--------	--------	--------	--------	--------	--------	--------	--------	--------	--------	--------	--------	--------	--------	--------	--------	--------	--------	--------	--------	--------	--------	--------	--------	--------	--------	--------	--------	--------	--------	--------	--------	--------	--------	--------	--------	--------	--------	--------	--------	--------	--------	--------	--------	--------	--------	--------	--------	--------	--------	--------	--------	--------	--------	--------	--------	--------	--------	--------	--------	--------	--------	--------	--------	--------	--------	--------	--------	--------	--------	--------	--------	--------	--------	--------	--------	--------	--------	--------	--------	--------	--------	--------	--------	--------	--------	--------	--------	--------	--------	--------	--------	--------	--------	--------	--------	--------	--------	--------	--------	--------	--------	--------	--------	--------	--------	--------	--------	--------	--------	--------	--------	--------	--------	--------	--------	--------	--------	--------	--------	--------	--------	--------	--------	--------	--------	--------	--------	--------	--------	--------	--------	--------	--------	--------	--------	--------	--------	--------	--------	--------	--------	--------	--------	--------	--------	--------	--------	--------	--------	--------	--------	--------	--------	--------	--------	--------	--------	--------	--------	--------	--------	--------	--------	--------	--------	--------	--------	--------	--------	--------	--------	--------	--------	--------	--------	--------	--------	--------	--------	--------	--------	--------	--------	--------	--------	--------	--------	--------	--------	--------	--------	--------	--------	--------	--------	--------	--------	--------	--------	--------	--------	--------	--------	--------	--------	--------	--------	--------	--------	--------	--------	--------	--------	--------	--------	--------	--------	--------	--------	--------	--------	--------	--------	--------	--------	--------	--------	--------	--------	--------	--------	--------	--------	--------	--------	--------	--------	--------	--------	--------	--------	--------	--------	--------	--------	--------	--------	--------	--------	--------	--------	--------	--------	--------	--------	--------	--------	--------	--------	--------	--------	--------	--------	--------	--------	--------	--------	--------	--------	--------	--------	--------	--------	--------	--------	--------	--------	--------	--------	--------	--------	--------	--------	--------	--------	--------	--------	--------	--------	--------	--------	--------	--------	--------	--------	--------	--------	--------	--------	--------	--------	--------	--------	--------	--------	--------	--------	--------	--------	--------	--------	--------	--------	--------	--------	--------	--------	--------	--------	--------	--------	--------	--------	--------	--------	--------	--------	--------	--------	--------	--------	--------	--------	--------	--------	--------	--------	--------	--------	--------	--------	--------	--------	--------	--------	--------	--------	--------	--------	--------	--------	--------	--------	--------	--------	--------	--------	--------	--------	--------	--------	--------	--------	--------	--------	--------	--------	--------	--------	--------	--------	--------	--------	--------	--------	--------	--------	--------	--------	--------	--------	--------	--------	--------	--------	--------	--------	--------	--------	--------	--------	--------	--------	--------	--------	--------	--------	--------	--------	--------	--------	--------	--------	--------	--------	--------	--------	--------	--------	--------	--------	--------	--------	--------	--------	--------	--------	--------	--------	--------	--------	--------	--------	--------	--------	--------	--------	--------	--------	--------	--------	--------	--------	--------	--------	--------	--------	--------	--------	--------	--------	--------	--------	--------	--------	--------	--------	--------	--------	--------	--------	--------	--------	--------	--------	--------	--------	--------	--------	--------	--------	--------	--------	--------	--------	--------	--------	--------	--------	--------	--------	--------	--------	--------	--------	--------	--------	--------	--------	--------	--------	--------	--------	--------	--------	--------	--------	--------	--------	--------	--------	--------	--------	--------	--------	--------	--------	--------	--------	--------	--------	--------	--------	--------	--------	--------	--------	--------	--------	--------	--------	--------	--------	--------	--------	--------	--------	--------	--------	--------	--------	--------	--------	--------	--------	--------	--------	--------	--------	--------	--------	--------	--------	--------	--------	--------	--------	--------	--------	--------	--------	--------	--------	--------	--------	--------	--------	--------	--------	--------	--------	--------	--------	--------	--------	--------	--------	--------	--------	--------	--------	--------	--------	--------	--------	--------	--------	--------	--------	--------	--------	--------	--------	--------	--------	--------	--------	--------	--------	--------	--------	--------	--------	--------	--------	--------	--------	--------	--------	--------	--------	--------	--------	--------	--------	--------	--------