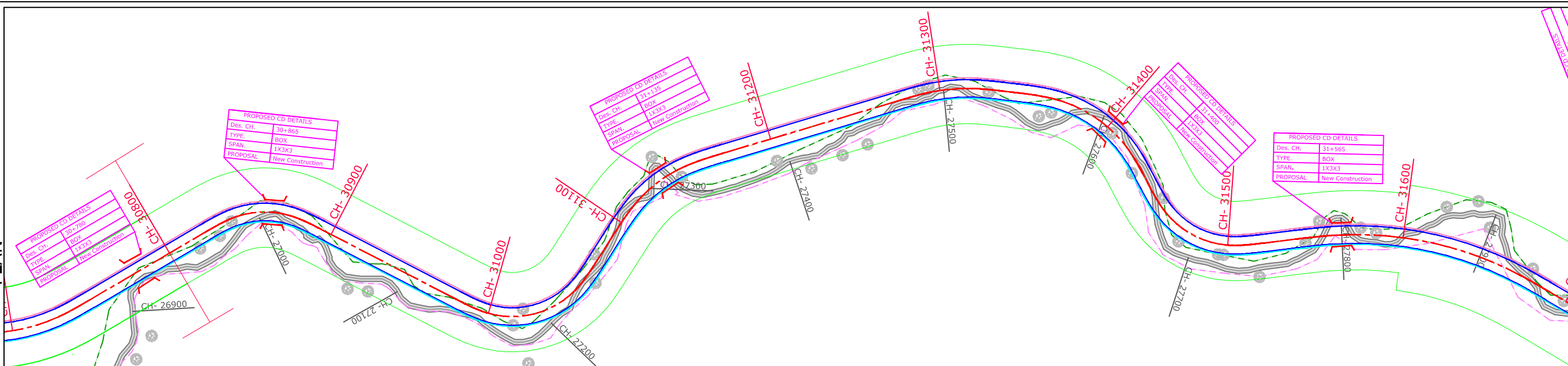
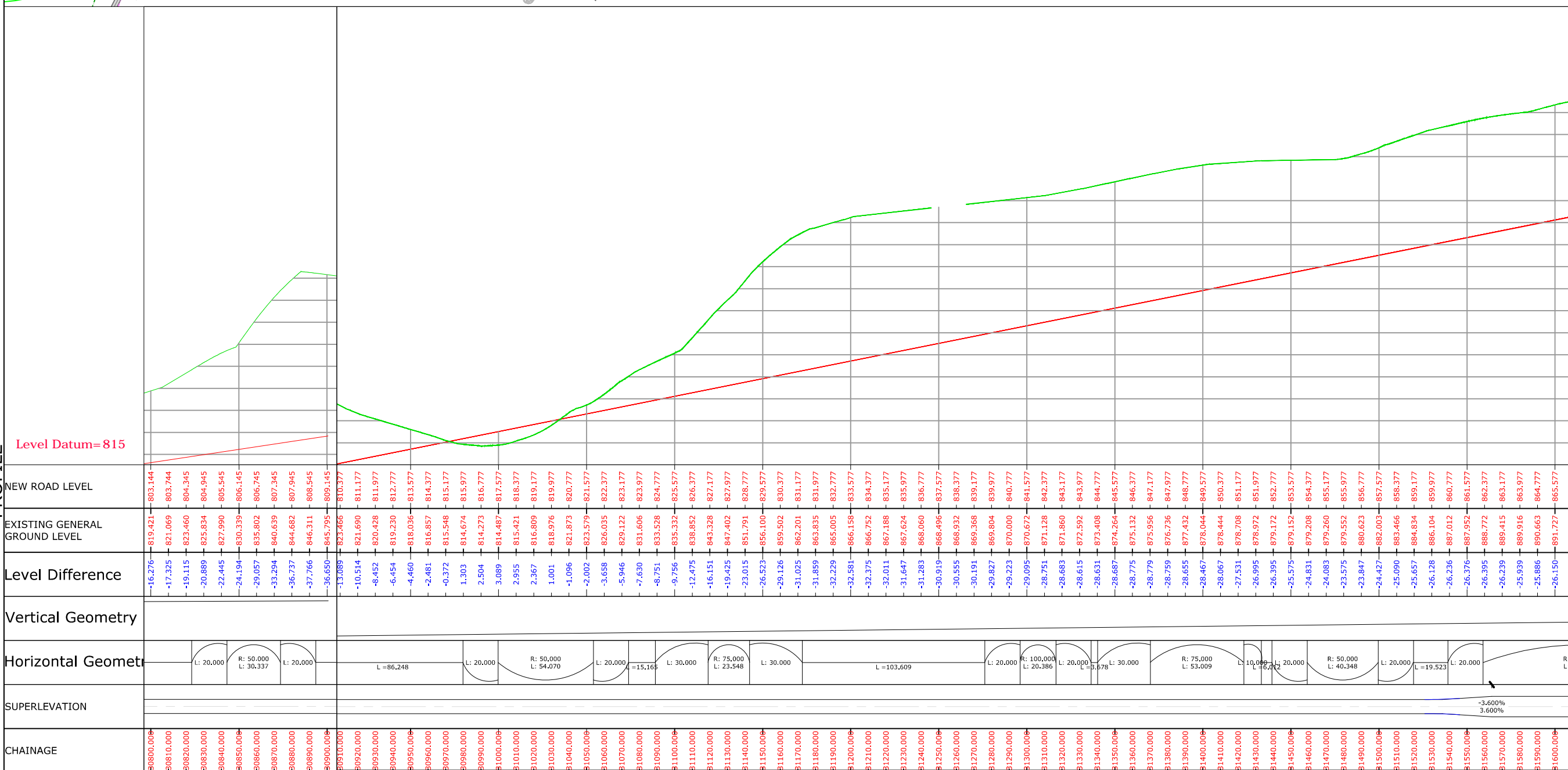


PLAN



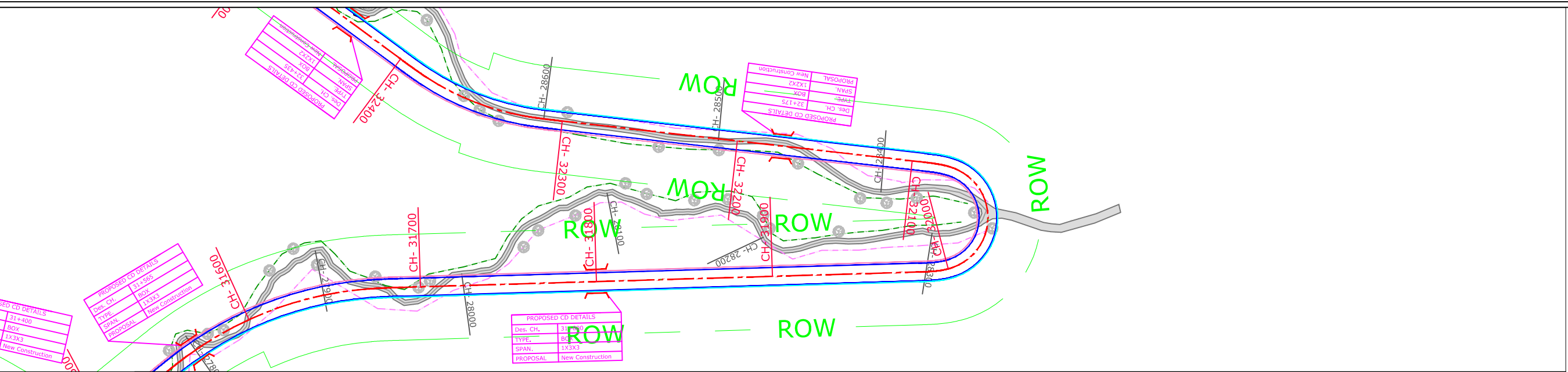
PROFILE



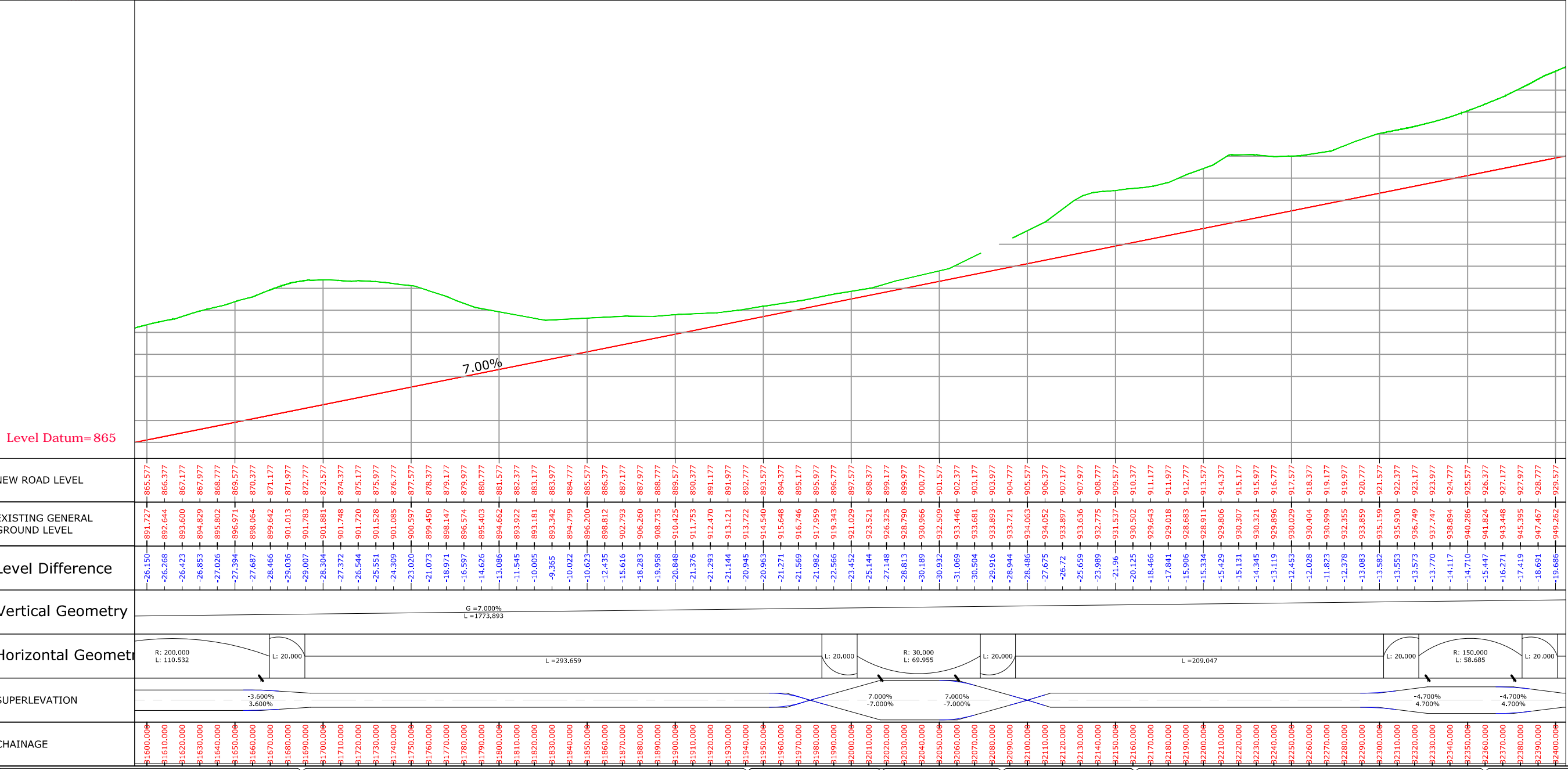
Legend	
Building	
Shop Gate	
Hut	
Water Tank	
Well	
Temple	
TBM.	
Electric Pole	
Telephone Pole	
Ht line 11 & 33 kva	
Nala	
Drain	
Sign Board RYL SP	
Tree Gamla	
Bambu	
Culvert	
Bridge	
Pond	
Handpump	
Tranformer	
Traverse Station	
Ground Level	
OFC	
Welcome Board	
River Canal	
Boundry Wall	
Existing BT	
Center Line	
Existing Road	
Carriageway	
Proposed Center Line	
Proposed CARRIGE WAY	
Proposed Shoulder	
Hms	
Kms RB	
IL BL	
TOWER	
PETROL PUMP	
Public Tap	
Proposed ROW	

CONSULTANTS :- L.N. MALVIYA INFRA PROJECTS PVT. LTD. <small>T-10, III FLOOR, CITY CENTER, PRESS COMPLEX, PLOT NO.-1, M.P. NAGAR, ZONE-I, BHOPAL (M.P.)</small>	CLIENT :- NATIONAL HIGHWAYS INFRASTRUCTURE DEVELOPMENT CORPORATION LIMITED (NHIDCL)	DRG. NO. : <div style="font-size: 2em; font-weight: bold;">1</div>	DESIGNED BY. 	APPROVED BY. 	PROJECT TITLE :- Consultancy Services for Preparation of Feasibility Study and Detailed Project Report For Two lane With Paved Shoulders of Tamenglong - Haflong Road In The State of Manipur on EPC Mode.	PLAN & PROFILE:- FROM DES. CH 30+800 - 31+600 PHELONG-AZURAM SECTION PKG-4
<small>Tel./Fax : 0755-4295421, Mob. : 09826452711, 09977004686 E-mail : lninfra@lmalviya.com</small>						

PLAN



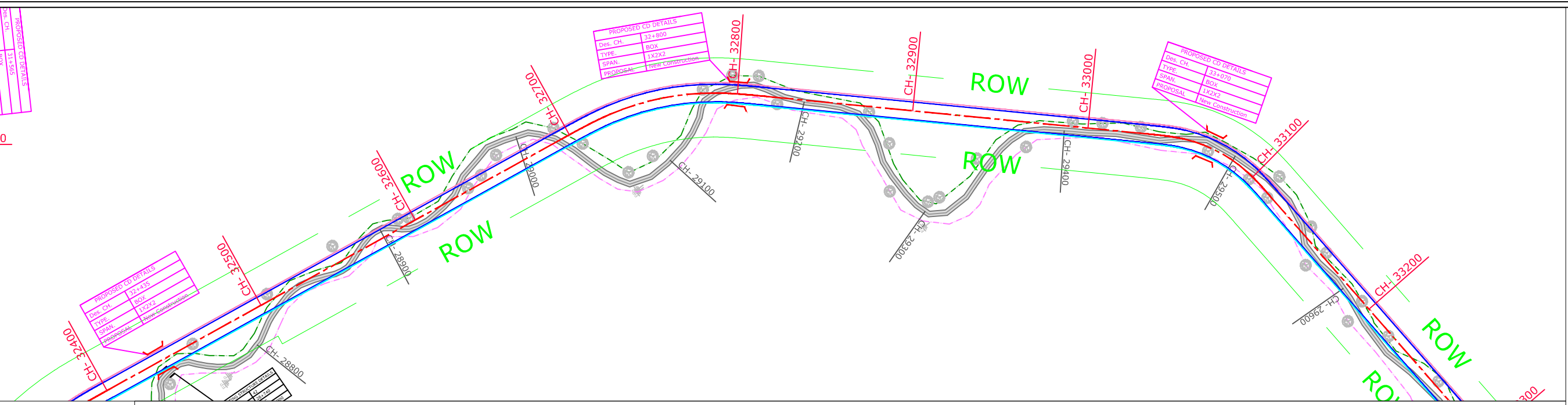
PROFILE



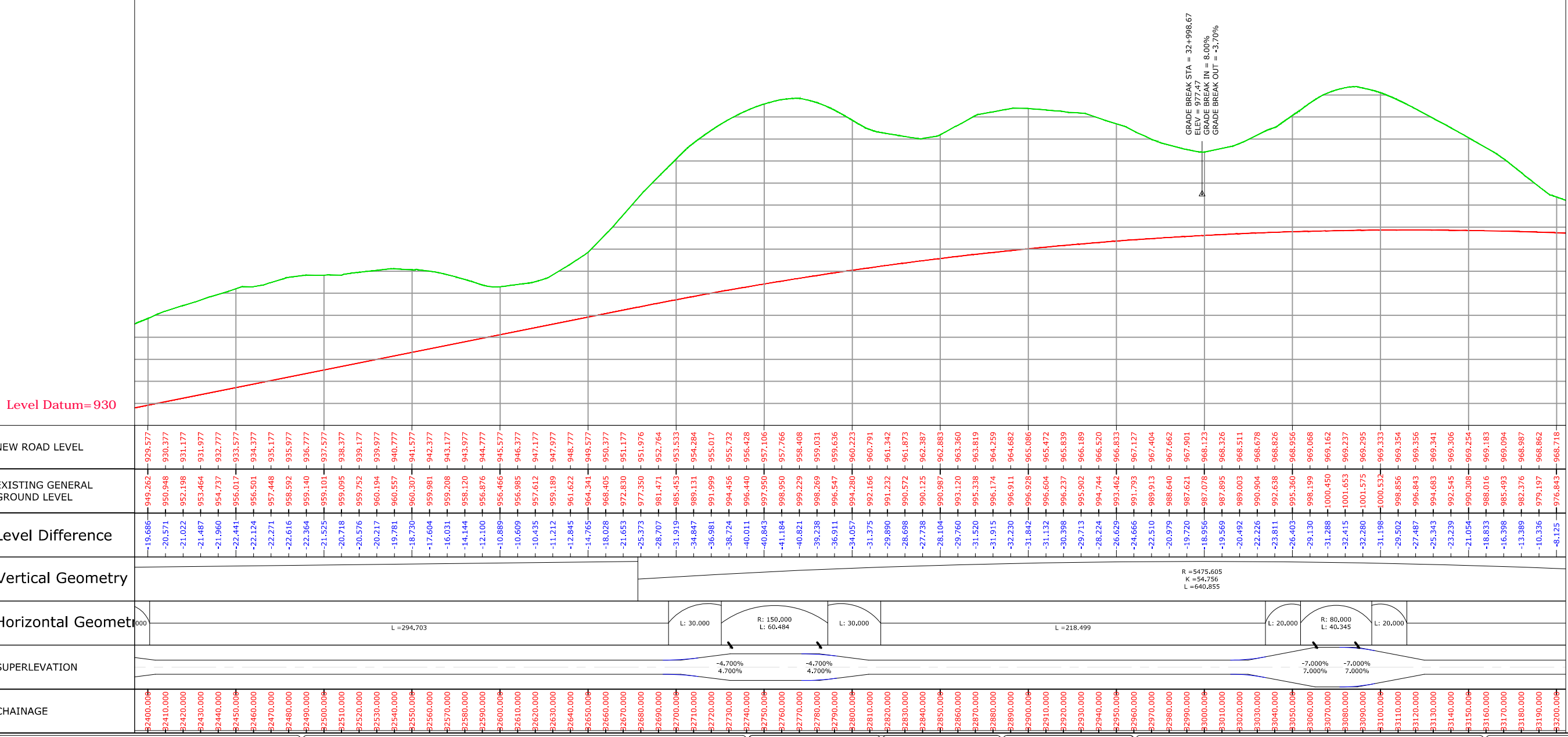
Legend	
Building	
Shop Gate	
Hut	
Water Tank	
Well	
Temple	
TBM.	
Electric Pole	
Telephone Pole	
Ht line 11 & 33 kva	
Nala	
Drain	
Sign Board	
RYL SP	
Tree Gamla	
Bambu	
Culvert	
Bridge	
Pond	
Handpump	
Tranformer	
Traverse Station	
Ground Level	
OFC	
Welcome Board	
River Canal	
Boundry Wall	
Existing BT	
Center Line	
Existing Road	
Carriageway	
Proposed Center Line	
Proposed CARRIGE WAY	
Proposed Shoulder	
Hms	
Kms RB	
IL BL	
TOWER	
PETROL PUMP	
Public Tap	
Proposed ROW	

CONSULTANTS :- L.N. MALVIYA INFRA PROJECTS PVT. LTD. T-10, III FLOOR, CITY CENTER, PRESS COMPLEX, PLOT NO.-1, M.P. NAGAR, ZONE-I, BHOPAL (M.P.) 		CLIENT :- NATIONAL HIGHWAYS INFRASTRUCTURE DEVELOPMENT CORPORATION LIMITED (NHIDCL) 		DRG. NO. :- <h1 style="text-align: center;">2</h1>	DESIGNED BY. 	APPROVED BY. 	PROJECT TITLE :- Consultancy Services for Preparation of Feasibility Study and Detailed Project Report For Two lane With Paved Shoulders of Tamenglong - Haflong Road In The State of Manipur on EPC Mode.		PLAN & PROFILE:- FROM DES. CH 31+600 - 32+400 PHELONG-AZURAM SECTION PKG-4	
--	--	--	--	--	-------------------------	-------------------------	--	--	--	--

PLAN



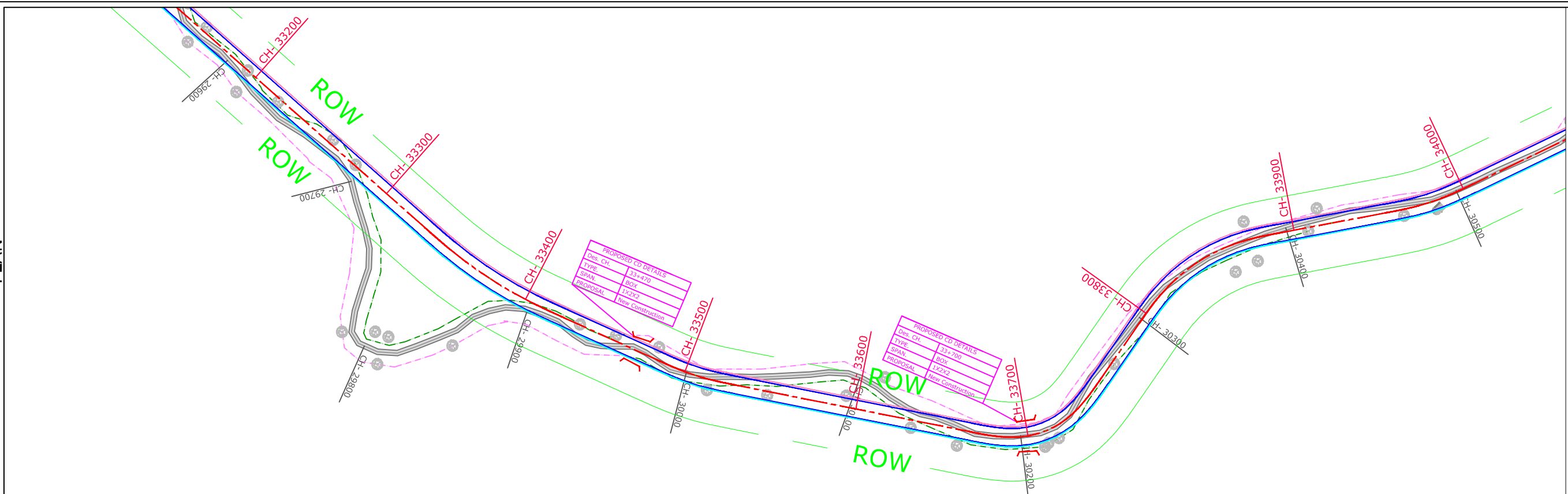
PROFILE



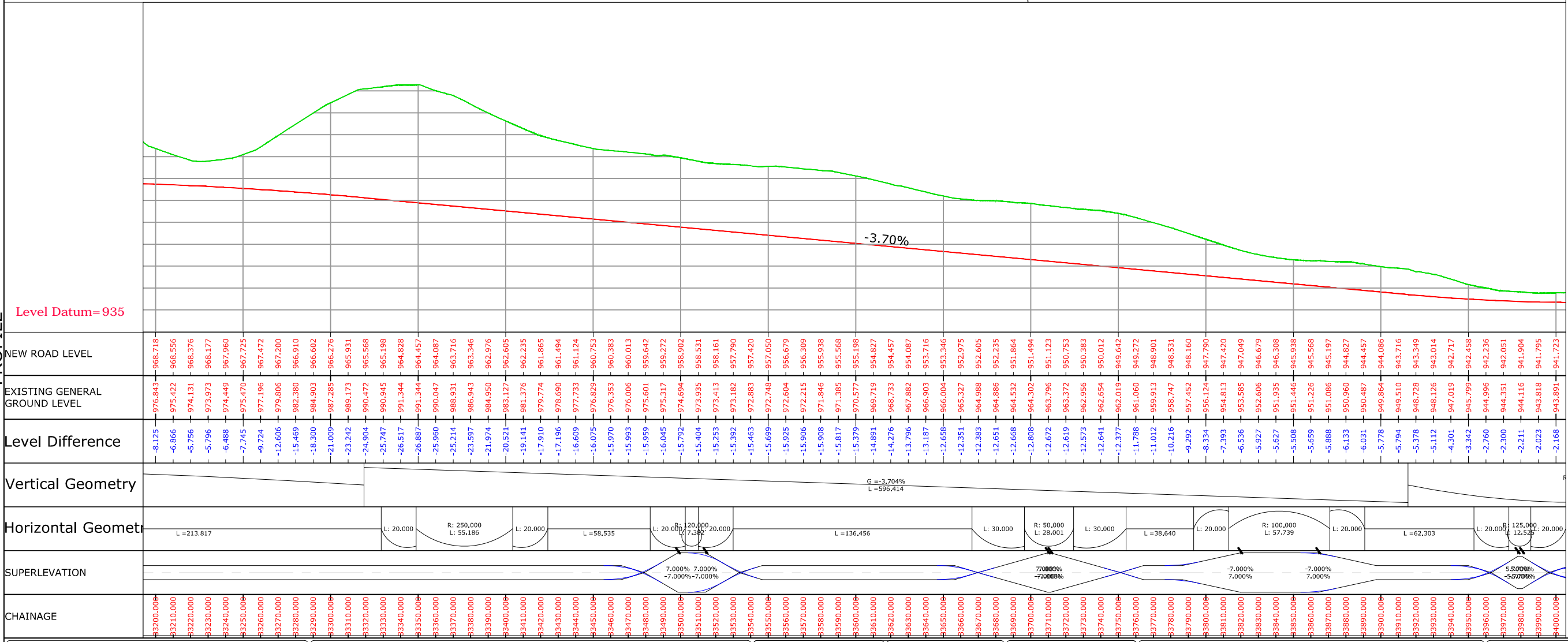
Legend	
Building	
Shop Gate	
Hut	
Water Tank	
Well	
Temple	
TBM.	
Electric Pole	
Telephone Pole	
Ht line 11 & 33 kva	
Nala	
Drain	
Sign Board	
RYL SP	
Tree Gamla	
Bambu	
Culvert	
Bridge	
Pond	
Handpump	
Tranformer	
Traverse Station	
Ground Level	
OFC	
Welcome Board	
River Canal	
Boundry Wall	
Existing BT	
Center Line	
Existing Road	
Carriageway	
Proposed Center Line	
Proposed CARRIGE WAY	
Proposed Shoulder	
Hms	
Kms RB	
IL BL	
TOWER	
PETROL PUMP	
Public Tap	
Proposed ROW	

CONSULTANTS :- L.N. MALVIYA INFRA PROJECTS PVT. LTD. T-10, III FLOOR, CITY CENTER, PRESS COMPLEX, PLOT NO.-1, M.P. NAGAR, ZONE-I, BHOPAL (M.P.) 		CLIENT :- NATIONAL HIGHWAYS INFRASTRUCTURE DEVELOPMENT CORPORATION LIMITED (NHIDCL) 		DRG. NO. : <h1 style="text-align: center;">3</h1>	DESIGNED BY. 	APPROVED BY. 	PROJECT TITLE :- Consultancy Services for Preparation of Feasibility Study and Detailed Project Report For Two lane With Paved Shoulders of Tamenglong - Haflong Road In The State of Manipur on EPC Mode.		PLAN & PROFILE:- FROM DES. CH 32+400 - 33+200 PHELONG-AZURAM SECTION PKG-4	
--	--	--	--	---	-------------------------	-------------------------	--	--	--	--

PLAN



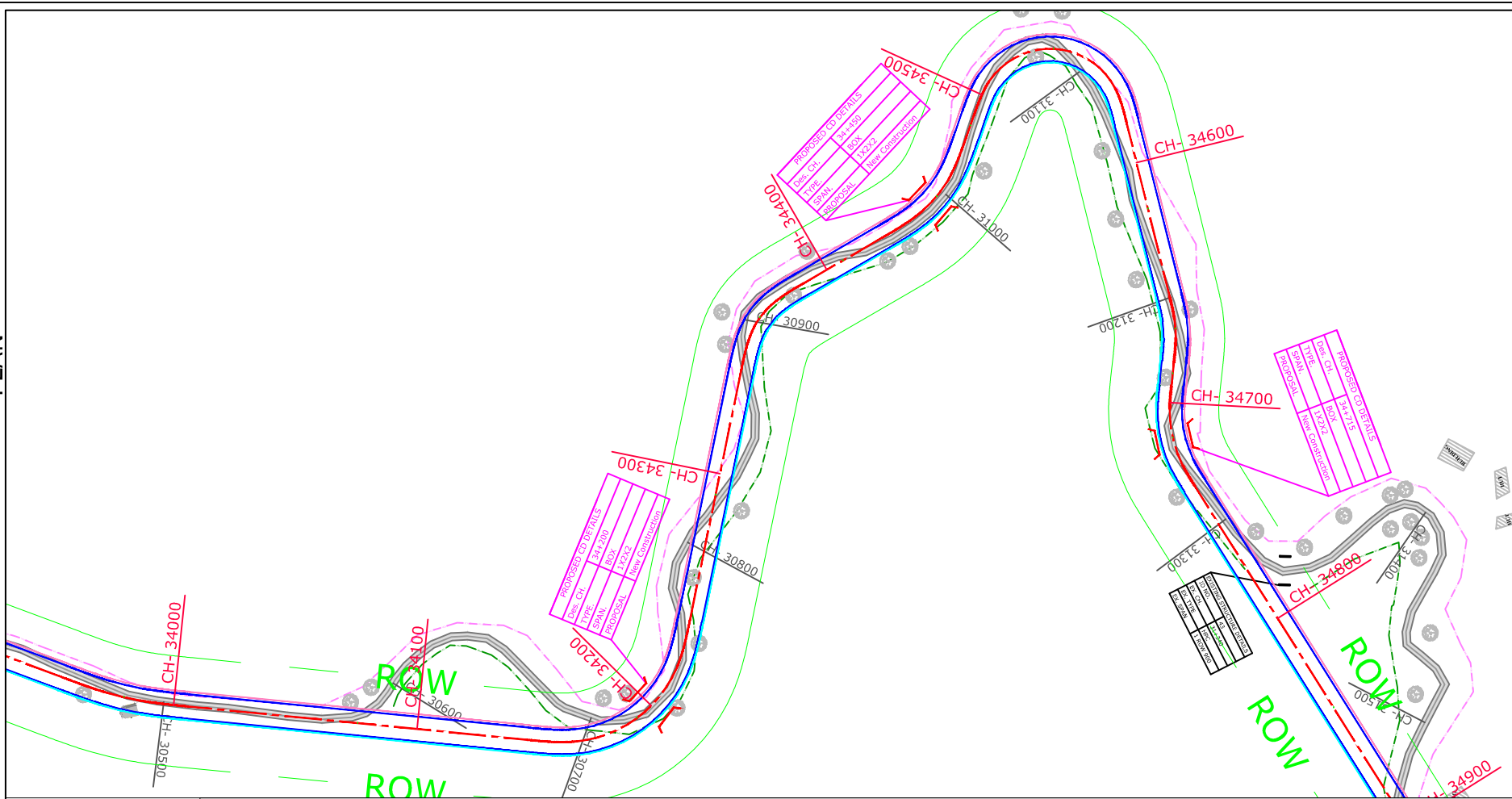
PROFILE



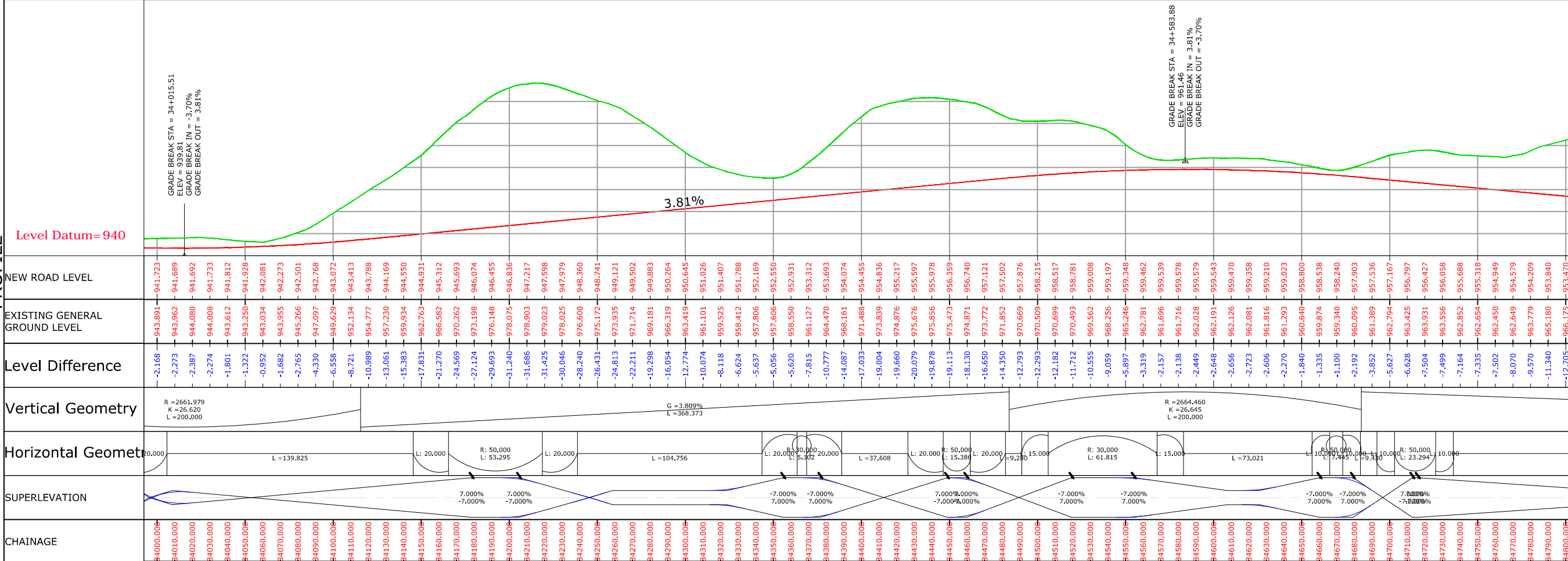
Legend	
Building	
Shop Gate	
Hut	
Water Tank	
Well	
Temple	
TBM.	
Electric Pole	
Telephone Pole	
Ht line 11 & 33 kva	
Nala	
Drain	
Sign Board	
RYL SP	
Tree Gamla	
Bambu	
Culvert	
Bridge	
Pond	
Handpump	
Tranformer	
Traverse Station	
Ground Level	
OFC	
Welcome Board	
River Canal	
Boundry Wall	
Existing BT	
Center Line	
Existing Road	
Carriageway	
Proposed Center Line	
Proposed CARRIGE WAY	
Proposed Shoulder	
Hms	
Kms RB	
IL BL	
TOWER	
PETROL PUMP	
Public Tap	
Proposed ROW	

CONSULTANTS :- L.N. MALVIYA INFRA PROJECTS PVT. LTD. T-10, III FLOOR, CITY CENTER, PRESS COMPLEX, PLOT NO.-1, M.P. NAGAR, ZONE-I, BHOPAL (M.P.) 		CLIENT :- NATIONAL HIGHWAYS INFRASTRUCTURE DEVELOPMENT CORPORATION LIMITED (NHIDCL) 		DRG. NO. : <h1 style="text-align: center;">4</h1>	DESIGNED BY : 	APPROVED BY : 	PROJECT TITLE :- Consultancy Services for Preparation of Feasibility Study and Detailed Project Report For Two lane With Paved Shoulders of Tamenglong - Haflong Road In The State of Manipur on EPC Mode.	PLAN & PROFILE:- FROM DES. CH 33+200 - 34+000 PHELONG-AZURAM SECTION PKG-4
--	--	--	--	---	--------------------------	--------------------------	--	--

PLAN

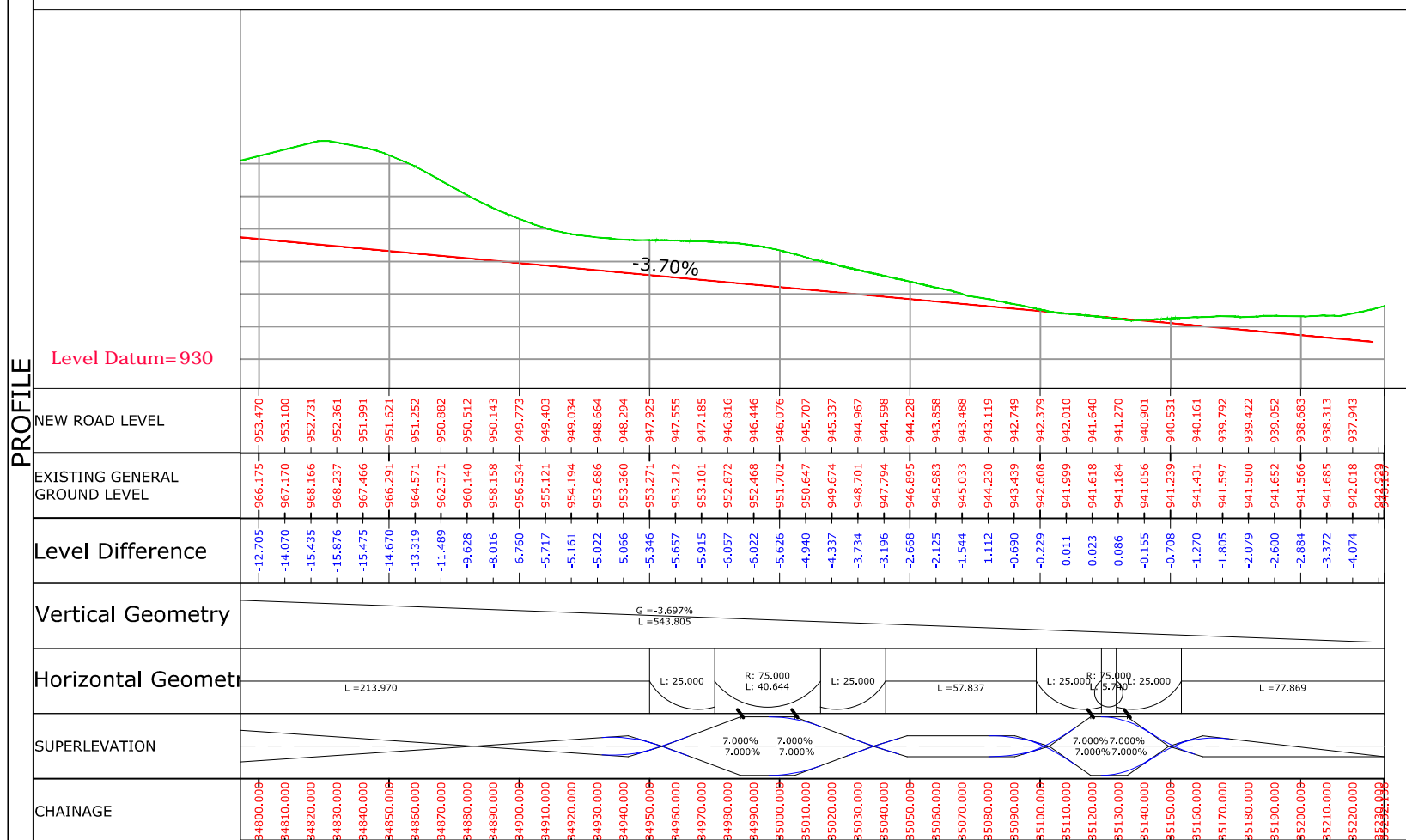
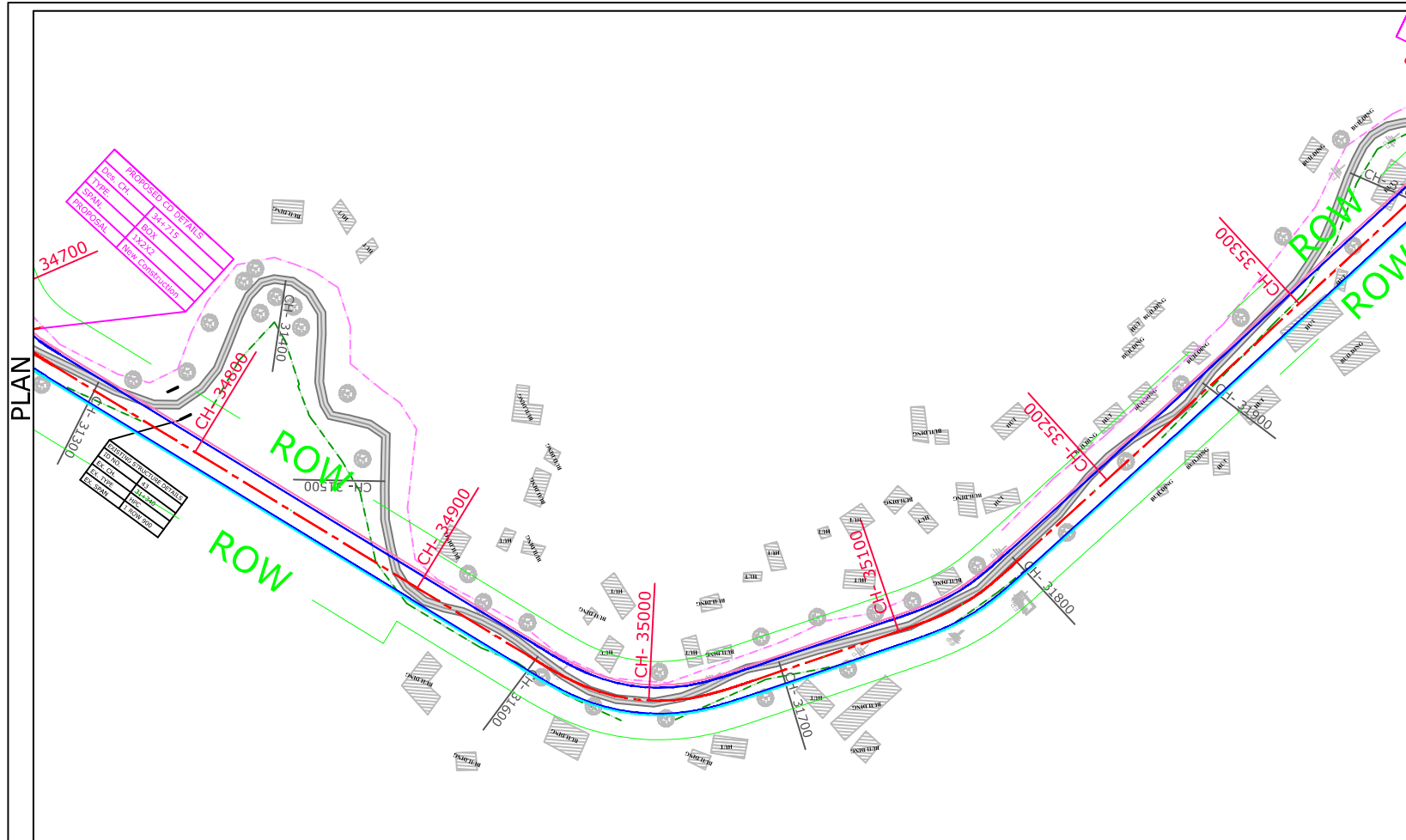


PROFILE



Legend	
Building	
Shop Gate	
Hut	
Water Tank	
Well	
Temple	
TBM.	
Electric Pole	
Telephone Pole	
Ht line 11 & 33 kva	
Nala	
Drain	
Sign Board	
RYL SP	
Tree Gamla	
Bambu	
Culvert	
Bridge	
Pond	
Handpump	
Tranformer	
Traverse Station	
Ground Level	
OFC	
Welcome Board	
River Canal	
Boundry Wall	
Existing BT	
Center Line	
Existing Road	
Carriageway	
Proposed Center Line	
Proposed CARRIGE WAY	
Proposed Shoulder	
Hms	
Kms RB	
IL BL	
TOWER	
PETROL PUMP	
Public Tap	
Proposed ROW	

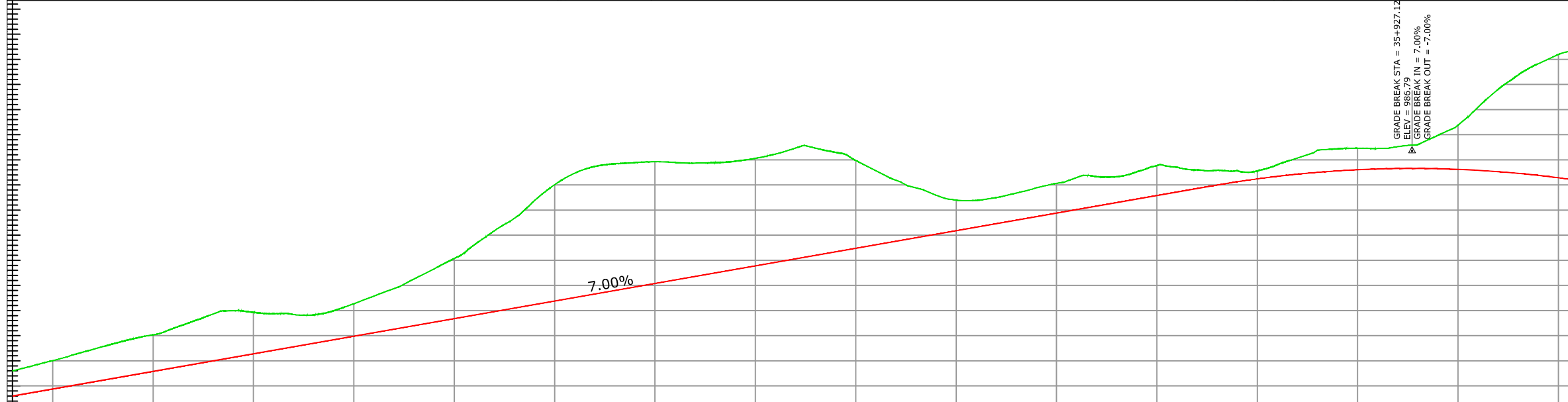
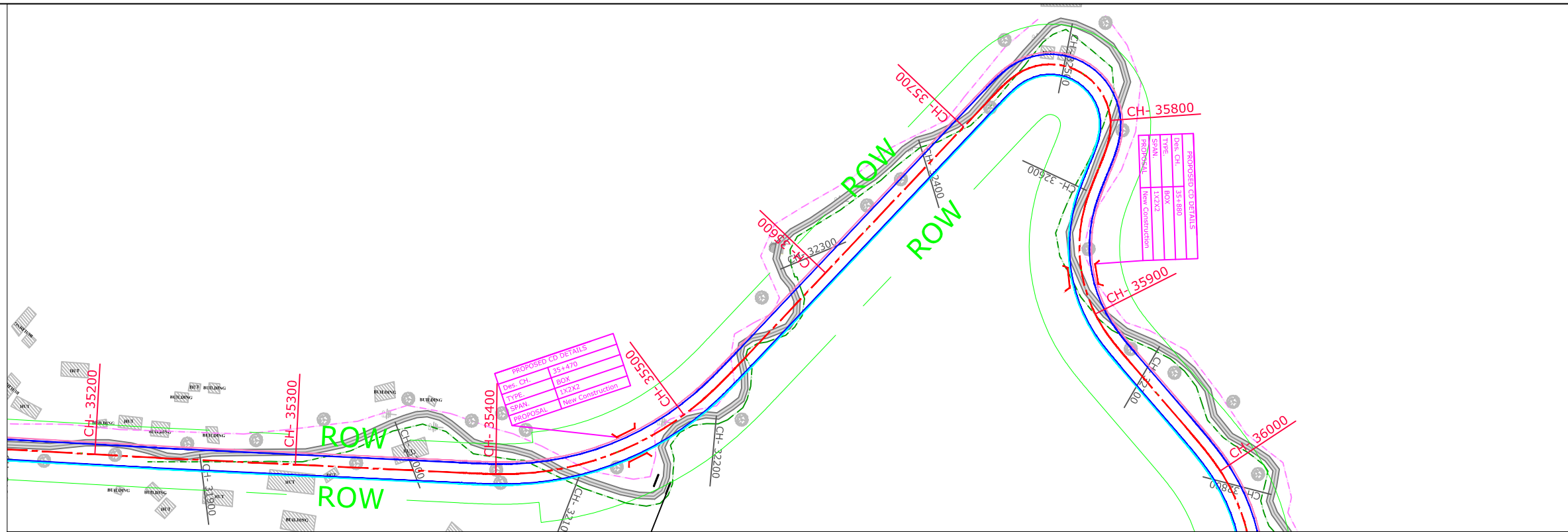
CONSULTANTS :- L.N. MALVIYA INFRA PROJECTS PVT. LTD. <small>T-10, III FLOOR, CITY CENTER, PRESS COMPLEX, PLOT NO.-1, M.P. NAGAR, ZONE-I, BHOPAL (M.P.)</small> 	CLIENT :- NATIONAL HIGHWAYS INFRASTRUCTURE DEVELOPMENT CORPORATION LIMITED (NHIDCL) 	DRG. NO. :- <h1 style="font-size: 2em;">5</h1>	DESIGNED BY. 	APPROVED BY. 	PROJECT TITLE :- Consultancy Services for Preparation of Feasibility Study and Detailed Project Report For Two lane With Paved Shoulders of Tamenglong - Haflong Road In The State of Manipur on EPC Mode.	PLAN & PROFILE:- FROM DES. CH 34+000 - 34+800 PHELONG-AZURAM SECTION PKG-4
<small>Tel./Fax : 0755-4295421, Mob.: 09826452711, 09977004686 E-mail : lninfra@lninfra.com</small>						



Legend	
Building	
Shop Gate	
Hut	
Water Tank	
Well	
Temple	
TBM.	
Electric Pole	
Telephone Pole	
Ht line 11 & 33 kva	
Nala	
Drain	
Sign Board	
RYL SP	
Tree Gamla	
Bambu	
Culvert	
Bridge	
Pond	
Handpump	
Tranformer	
Traverse Station	
Ground Level	
OFC	
Welcome Board	
River Canal	
Boundry Wall	
Existing BT	
Center Line	
Existing Road	
Carriageway	
Proposed Center Line	
Proposed CARRIGE WAY	
Proposed Shoulder	
Hms	
Kms RB	
IL BL	
TOWER	
PETROL PUMP	
Public Tap	
Proposed ROW	

CONSULTANTS :- L.N. MALVIYA INFRA PROJECTS PVT. LTD. T-10, III FLOOR, CITY CENTER, PRESS COMPLEX, PLOT NO.-1, M.P. NAGAR, ZONE-I, BHOPAL (M.P.) Tel./Fax : 0755-4295421, Mob.: 09826452711, 09977004686 E-mail : lninfra@projects@gmail.com		CLIENT :- NATIONAL HIGHWAYS INFRASTRUCTURE DEVELOPMENT CORPORATION LIMITED (NHIDCL)		DRG. NO. : <h1 style="text-align: center;">6</h1>	DESIGNED BY.	APPROVED BY.	PROJECT TITLE :- Consultancy Services for Preparation of Feasibility Study and Detailed Project Report For Two lane With Paved Shoulders of Tamenglong - Haflong Road In The State of Manipur on EPC Mode.	PLAN & PROFILE:- FROM DES. CH 34+800 - 35+230 PHELONG-AZURAM SECTION PKG-4
---	--	--	--	--	--------------	--------------	--	--

Legend	
Building	
Shop Gate	
Hut	
Water Tank	
Well	
Temple	
TBM.	
Electric Pole	
Telephone Pole	
Ht line 11 & 33 kva	
Nala	
Drain	
Sign Board	
RYL SP	
Tree Gamla	
Bambu	
Culvert	
Bridge	
Pond	
Handpump	
Tranformer	
Traverse Station	
Ground Level	
OFC	
Welcome Board	
River Canal	
Boundry Wall	
Existing BT Center Line	
Existing Road Carriageway	
Proposed Center Line	
Proposed CARRIGE WAY	
Proposed Shoulder	
Hms	
Kms RB	
IL BL	
TOWER	
PETROL PUMP	
Public Tap	
Proposed ROW	



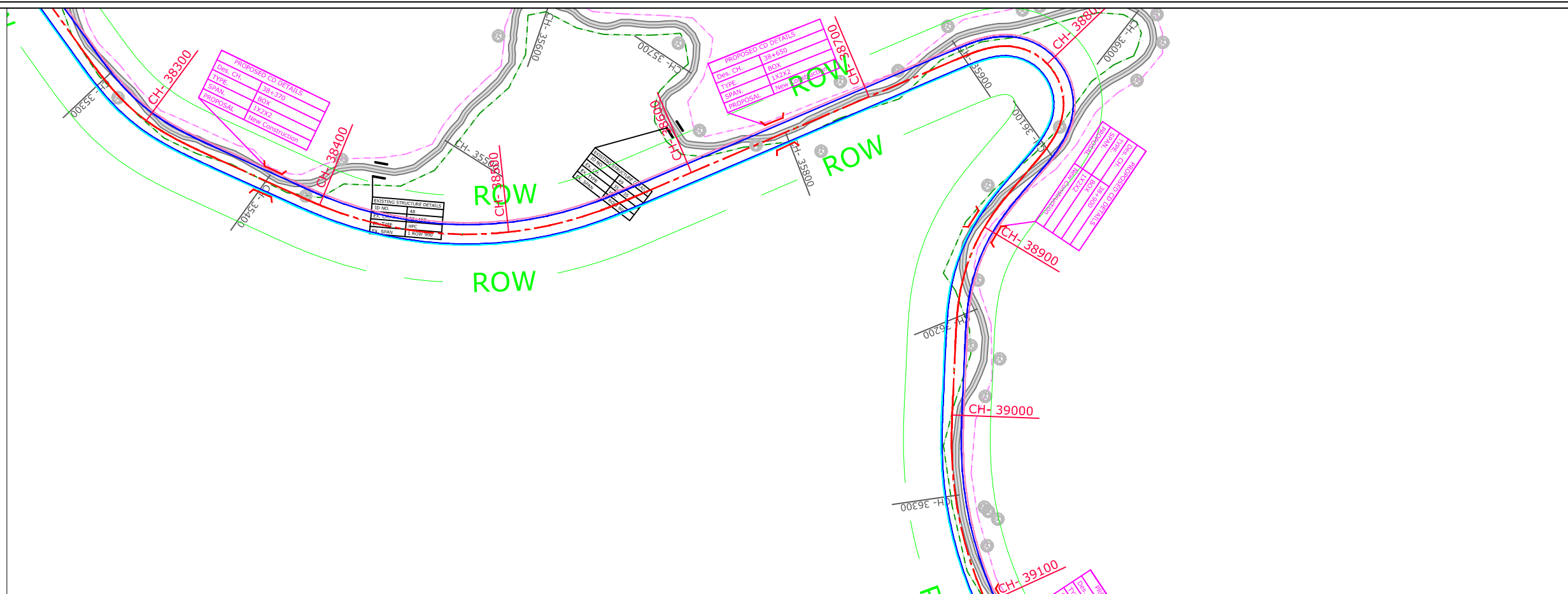
NEW ROAD LEVEL	EXISTING GENERAL GROUND LEVEL	Level Difference	Vertical Geometry	Horizontal Geomet	SUPERLEVATION	CHAINAGE
935.695	944.010	-5.315	G = 7.000% L = 597.006	L = 45.437	-5.700% 5.700%	35240.000
935.395	945.039	-5.644				35250.000
940.095	946.177	-6.081	R = 1428.571 K = 14.286 L = 200.000	L: 20.000 L: 12.779	-5.700% 5.700%	35260.000
941.495	947.277	-6.482				35270.000
942.895	948.371	-6.876	L: 20.000	L: 13.058	7.000% -7.000%	35280.000
942.195	949.383	-7.187				35290.000
943.595	950.183	-7.287	R: 50.000 L: 24.063	L: 15.000	-7.000% 7.000%	35300.000
943.895	951.452	-7.857				35310.000
944.295	952.875	-8.580	L = 46.506	L = 15.000	-7.000% 7.000%	35320.000
944.995	954.323	-9.328				35330.000
945.695	954.984	-9.288	L: 20.000	L: 15.000	-7.000% 7.000%	35340.000
946.395	954.654	-8.258				35350.000
947.095	954.389	-7.293	R: 200.000 L: 43.218	L: 15.000	2.000% -2.000%	35360.000
947.795	954.209	-6.414				35370.000
948.495	954.143	-5.648	L = 115.233	L: 20.000	7.000% -7.000%	35380.000
949.195	954.982	-5.786				35390.000
949.895	956.372	-6.476	L: 20.000	L: 20.000	-5.700% 5.700%	35400.000
950.595	957.893	-7.298				35410.000
951.295	959.383	-8.087	L: 20.000	L: 20.000	-5.700% 5.700%	35420.000
951.995	961.294	-9.299				35430.000
952.695	963.294	-10.599	L: 20.000	L: 20.000	-5.700% 5.700%	35440.000
953.395	965.367	-11.972				35450.000
954.095	968.076	-13.981	L: 20.000	L: 20.000	-5.700% 5.700%	35460.000
954.795	970.882	-16.086				35470.000
955.495	973.383	-17.888	L: 20.000	L: 20.000	-5.700% 5.700%	35480.000
956.195	976.878	-20.683				35490.000
956.895	980.050	-23.154	L: 20.000	L: 20.000	-5.700% 5.700%	35500.000
957.595	982.341	-24.746				35510.000
958.295	983.677	-25.382	L: 20.000	L: 20.000	-5.700% 5.700%	35520.000
958.995	984.214	-25.219				35530.000
959.695	984.436	-24.740	L: 20.000	L: 20.000	-5.700% 5.700%	35540.000
960.395	984.631	-24.236				35550.000
961.095	984.487	-23.391	L: 20.000	L: 20.000	-5.700% 5.700%	35560.000
961.795	984.346	-22.551				35570.000
962.495	984.443	-21.948	L: 20.000	L: 20.000	-5.700% 5.700%	35580.000
963.195	984.712	-21.517				35590.000
963.895	985.295	-21.400	L: 20.000	L: 20.000	-5.700% 5.700%	35600.000
964.595	986.154	-21.559				35610.000
965.295	987.337	-22.041	L: 20.000	L: 20.000	-5.700% 5.700%	35620.000
965.995	987.323	-21.327				35630.000
966.695	986.485	-19.790	L: 20.000	L: 20.000	-5.700% 5.700%	35640.000
967.395	984.872	-17.476				35650.000
968.095	982.839	-14.743	L: 20.000	L: 20.000	-5.700% 5.700%	35660.000
968.795	980.948	-12.152				35670.000
969.495	979.427	-9.932	L: 20.000	L: 20.000	-5.700% 5.700%	35680.000
970.195	977.947	-7.752				35690.000
970.895	976.928	-6.092	L: 20.000	L: 20.000	-5.700% 5.700%	35700.000
971.595	974.395	-5.915				35710.000
972.295	972.295	-5.181	L: 20.000	L: 20.000	-5.700% 5.700%	35720.000
972.995	970.430	-5.735				35730.000
973.695	970.311	-5.915	L: 20.000	L: 20.000	-5.700% 5.700%	35740.000
974.395	970.475	-6.380				35750.000
975.095	975.095	-5.865	L: 20.000	L: 20.000	-5.700% 5.700%	35760.000
975.795	976.645	-5.150				35770.000
976.495	981.610	-5.415	L: 20.000	L: 20.000	-5.700% 5.700%	35780.000
977.195	982.610	-5.415				35790.000
977.895	983.875	-5.980	L: 20.000	L: 20.000	-5.700% 5.700%	35800.000
978.595	983.036	-4.281				35810.000
979.295	983.508	-4.913	L: 20.000	L: 20.000	-5.700% 5.700%	35820.000
979.995	982.983	-3.687				35830.000
980.695	982.936	-2.943	L: 20.000	L: 20.000	-5.700% 5.700%	35840.000
981.395	982.830	-2.192				35850.000
982.095	982.778	-1.566	L: 20.000	L: 20.000	-5.700% 5.700%	35860.000
982.795	981.212	-2.300				35870.000
983.495	984.017	-3.212	L: 20.000	L: 20.000	-5.700% 5.700%	35880.000
984.195	985.364	-4.417				35890.000
984.895	986.934	-4.417	L: 20.000	L: 20.000	-5.700% 5.700%	35900.000
985.595	987.200	-4.388				35910.000
986.295	988.021	-4.730	L: 20.000	L: 20.000	-5.700% 5.700%	35920.000
986.995	989.878	-6.642				35930.000
987.695	991.906	-8.795	L: 20.000	L: 20.000	-5.700% 5.700%	35940.000
988.395	993.110	-12.581				35950.000
989.095	995.497	-12.581	L: 20.000	L: 20.000	-5.700% 5.700%	35960.000
989.795	998.915	-16.394				35970.000
990.495	999.044	-19.591	L: 20.000	L: 20.000	-5.700% 5.700%	35980.000
991.195	1001.906	-22.235				35990.000
991.895	1004.144	-24.533	L: 20.000	L: 20.000	-5.700% 5.700%	36000.000

PLAN

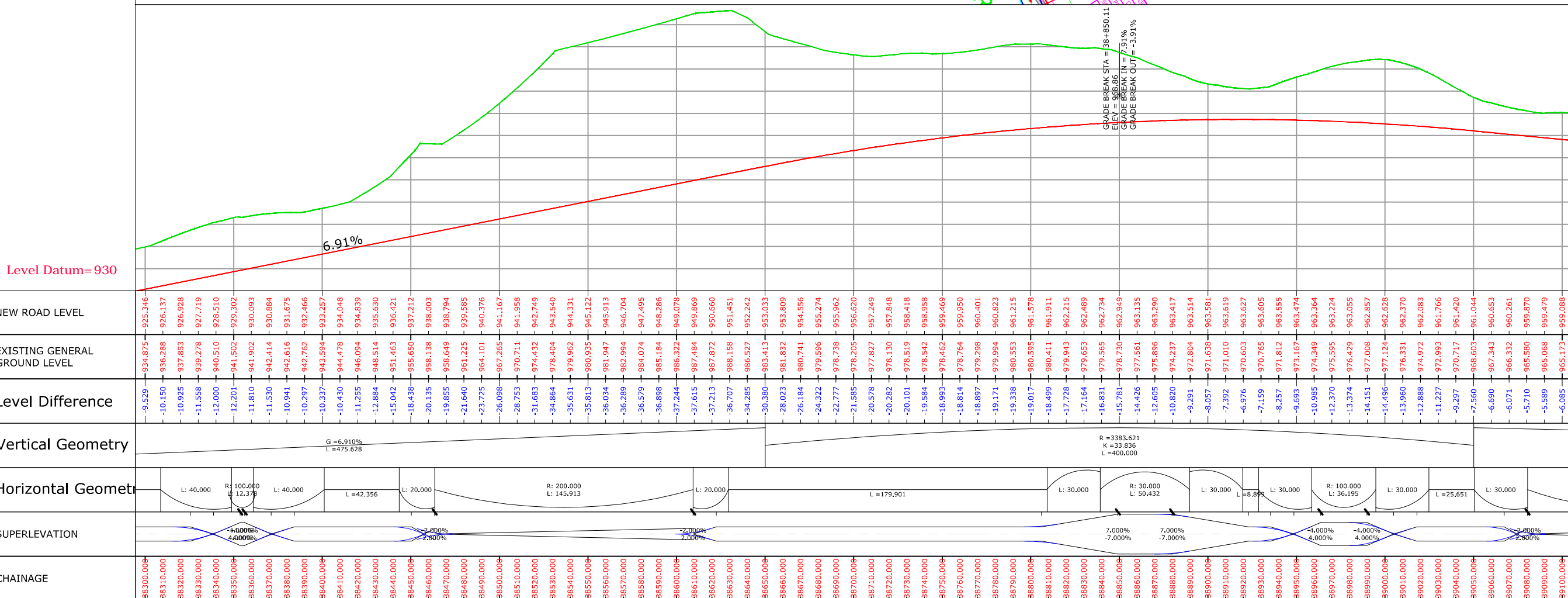
PROFILE

CONSULTANTS :- L.N. MALVIYA INFRA PROJECTS PVT. LTD. T-10, III FLOOR, CITY CENTER, PRESS COMPLEX, PLOT NO.-1, M.P. NAGAR, ZONE-I, BHOPAL (M.P.) 		CLIENT :- NATIONAL HIGHWAYS INFRASTRUCTURE DEVELOPMENT CORPORATION LIMITED (NHIDCL) 		DRG. NO. : <div style="font-size: 2em; text-align: center;">7</div>	DESIGNED BY :	APPROVED BY :	PROJECT TITLE :- Consultancy Services for Preparation of Feasibility Study and Detailed Project Report For Two lane With Paved Shoulders of Tamenglong - Haflong Road In The State of Manipur on EPC Mode.	PLAN & PROFILE:- FROM DES. CH 35+230 - 36+000 PHELONG-AZURAM SECTION PKG-4
Tel./Fax : 0755-4295421, Mob. : 09826452711, 09977004686 E-mail : lninfraprojects@gmail.com								

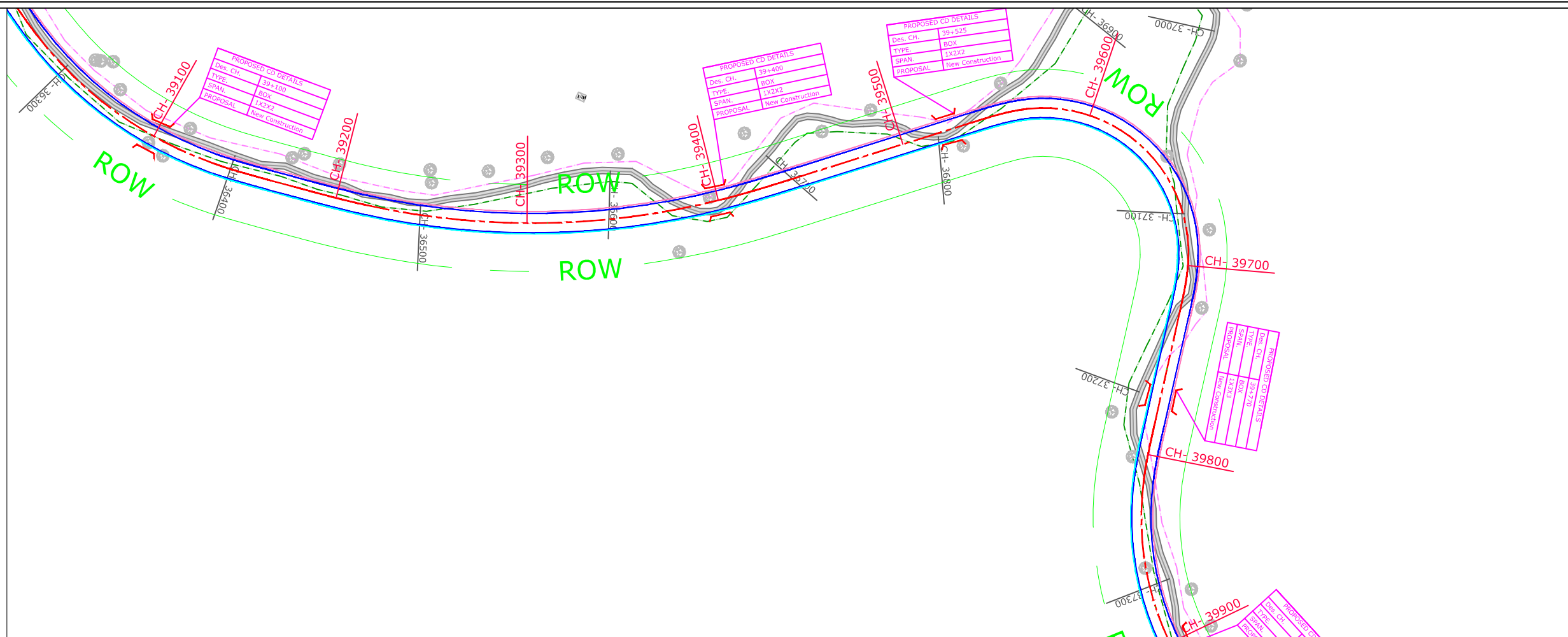
PLAN



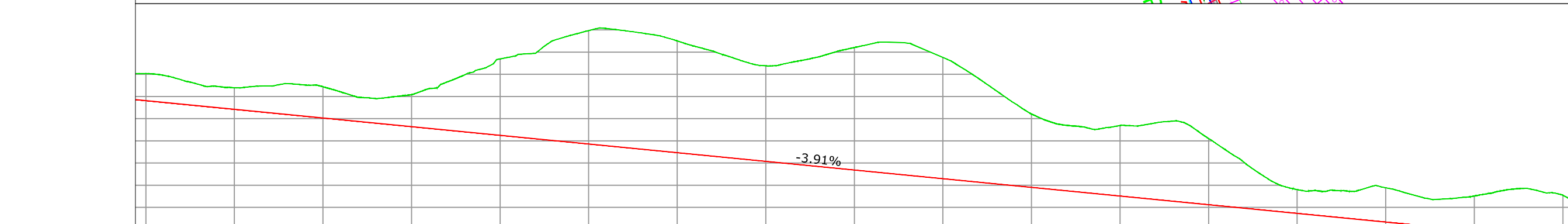
PROFILE



PLAN



PROFILE



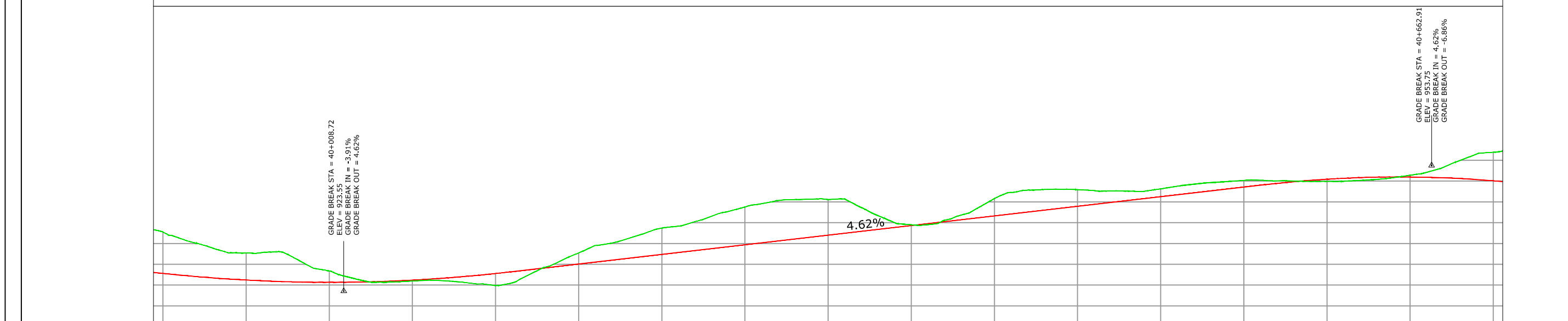
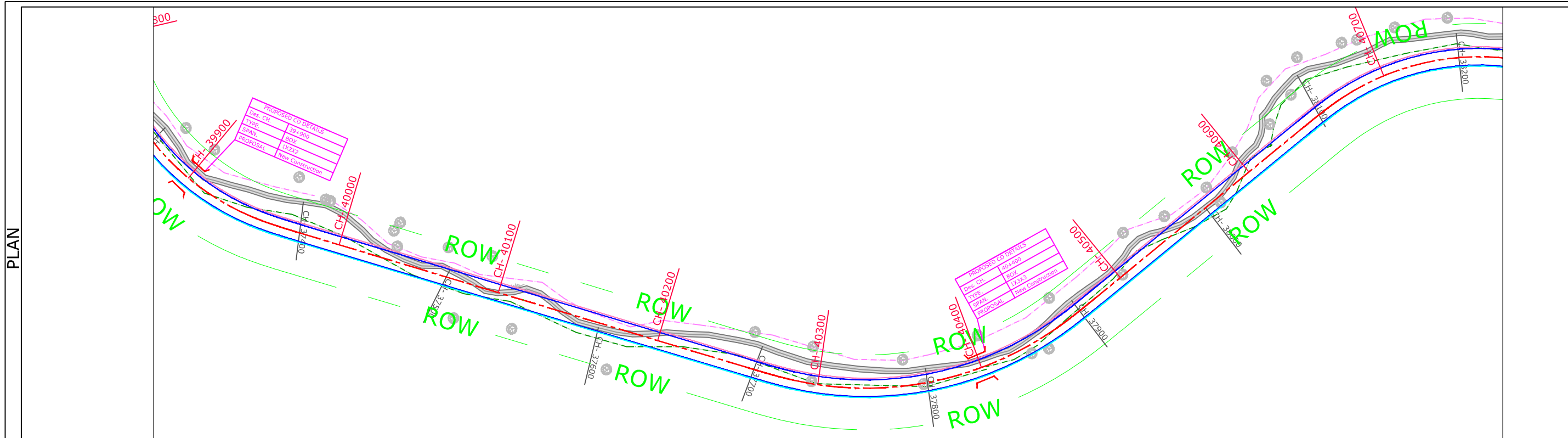
NEW ROAD LEVEL	959.088 958.697 958.306 957.915 957.524 957.132 956.741 956.350 955.959 955.568 955.177 954.786 954.395 954.003 953.612 953.221 952.830 952.439 952.048 951.657 951.266 950.874 950.483 950.092 949.701 949.310 948.919 948.528 948.137 947.745 947.354 946.963 946.572 946.181 945.790 945.399 945.008 944.616 944.225 943.834 943.443 943.052 942.661 942.270 941.879 941.487 941.096 940.705 940.314 939.923 939.532 939.141 938.750 938.358 937.967 937.576 937.185 936.794 936.403 936.012 935.621 935.229 934.838 934.447 934.056 933.665 933.274 932.883 932.492 932.100 931.709 931.318 930.927 930.536 930.145 929.754 929.363 928.971 928.580 928.189 927.798
EXISTING GENERAL GROUND LEVEL	965.173 964.765 963.771 962.728 961.964 962.249 962.394 962.890 962.567 962.204 961.047 959.825 959.513 959.949 960.416 961.798 963.255 964.885 966.280 968.483 969.441 969.749 972.620 973.805 974.843 975.329 974.854 974.300 974.300 973.672 972.546 971.301 970.231 970.231 968.909 967.608 966.919 966.332 968.116 968.956 970.120 971.038 971.894 971.894 972.217 972.035 970.511 968.798 966.798 966.664 964.095 964.332 961.332 958.581 956.054 954.384 953.501 953.078 953.078 952.813 953.967 953.456 953.356 953.185 954.043 954.475 953.303 950.533 947.853 945.171 942.346 940.071 939.017 938.827 938.869 938.619 939.475 939.435 938.438 937.331 936.854 937.118 937.586 938.250 939.063 939.281 938.331 937.743
Level Difference	-6.085 -6.068 -5.465 -4.807 -4.754 -4.832 -5.508 -6.044 -6.931 -6.999 -7.027 -6.261 -5.431 -5.509 -6.337 -7.195 -8.968 -10.816 -12.837 -14.623 -17.218 -18.566 -19.266 -22.528 -24.104 -25.532 -26.411 -26.327 -26.163 -25.926 -25.192 -24.338 -23.659 -22.728 -21.818 -21.521 -22.324 -23.500 -24.730 -26.286 -27.595 -28.842 -29.556 -29.766 -28.632 -27.310 -25.567 -23.390 -21.018 -18.658 -16.522 -15.243 -14.751 -14.720 -14.846 -15.880 -16.171 -17.250 -18.072 -17.291 -14.913 -12.623 -10.332 -7.899 -6.015 -5.352 -5.554 -5.987 -6.128 -7.374 -7.726 -7.120 -6.404 -6.318 -6.973 -7.833 -8.888 -10.091 -10.701 -10.142 -9.945
Vertical Geometry	G = -3.911% L = 858.616
Horizontal Geomet	R: 200.000 L: 114.230 L: 30.000 L: 40.000 R: 400.000 L: 187.403 L: 40.000 L: 93.640 L: 30.000 R: 75.000 L: 127.208 L: 30.000 L: 59.500 L: 30.000
SUPERELEVATION	-2.000% 2.000% -1.600% 1.600% -1.600% 1.600% 5.700% -5.700% 5.700% -5.700% 2.700% -2.700%
CHAINAGE	9100.000 9110.000 9120.000 9130.000 9140.000 9150.000 9160.000 9170.000 9180.000 9190.000 9200.000 9210.000 9220.000 9230.000 9240.000 9250.000 9260.000 9270.000 9280.000 9290.000 9300.000 9310.000 9320.000 9330.000 9340.000 9350.000 9360.000 9370.000 9380.000 9390.000 9400.000 9410.000 9420.000 9430.000 9440.000 9450.000 9460.000 9470.000 9480.000 9490.000 9500.000 9510.000 9520.000 9530.000 9540.000 9550.000 9560.000 9570.000 9580.000 9590.000 9600.000 9610.000 9620.000 9630.000 9640.000 9650.000 9660.000 9670.000 9680.000 9690.000 9700.000 9710.000 9720.000 9730.000 9740.000 9750.000 9760.000 9770.000 9780.000 9790.000 9800.000 9810.000 9820.000 9830.000 9840.000 9850.000 9860.000 9870.000 9880.000 9890.000 9900.000

Legend

Building	
Shop Gate	
Hut	
Water Tank	
Well	
Temple	
TBM.	
Electric Pole	
Telephone Pole	
Ht line 11 & 33 kva	
Nala	
Drain	
Sign Board	
RYL SP	
Tree Gamla	
Bambu	
Culvert	
Bridge	
Pond	
Handpump	
Tranformer	
Traverse Station	
Ground Level	
OFC	
Welcome Board	
River Canal	
Boundry Wall	
Existing BT	
Center Line	
Existing Road	
Carriageway	
Proposed Center Line	
Proposed CARRIGE WAY	
Proposed Shoulder	
Hms	
Kms RB	
IL BL	
TOWER	
PETROL PUMP	
Public Tap	
Proposed ROW	

-- CONSULTANTS --		-- CLIENT --		DRG. NO. :	DESIGNED BY.	APPROVED BY.	-- PROJECT TITLE --		-- PLAN & PROFILE --	
L.N. MALVIYA INFRA PROJECTS PVT. LTD. T-10, III FLOOR, CITY CENTER, PRESS COMPLEX, PLOT NO.-1, M.P. NAGAR, ZONE-I, BHOPAL (M.P.) 		NATIONAL HIGHWAYS INFRASTRUCTURE DEVELOPMENT CORPORATION LIMITED (NHIDCL) 		12			Consultancy Services for Preparation of Feasibility Study and Detailed Project Report For Two lane With Paved Shoulders of Tamenglong - Haflong Road In The State of Manipur on EPC Mode.		FROM DES. CH 39+100 - 39+900 PHELONG-AZURAM SECTION PKG-4	
Tel./Fax : 0755-4295421, Mob.: 09826452711, 09977004686 E-mail : lninfraprojects@gmail.com										

Legend	
Building	
Shop Gate	
Hut	
Water Tank	
Well	
Temple	
TBM.	
Electric Pole	
Telephone Pole	
Ht line 11 & 33 kva	
Nala	
Drain	
Sign Board	
RYL SP	
Tree Gamla	
Bambu	
Culvert	
Bridge	
Pond	
Handpump	
Tranformer	
Traverse Station	
Ground Level	
OFC	
Welcome Board	
River Canal	
Boundry Wall	
Existing BT	
Center Line	
Existing Road	
Carriageway	
Proposed Center Line	
Proposed CARRIGE WAY	
Proposed Shoulder	
Hms	
Kms RB	
IL BL	
TOWER	
PETROL PUMP	
Public Tap	
Proposed ROW	



Level Datum= 910	NEW ROAD LEVEL	EXISTING GENERAL GROUND LEVEL	Level Difference	Vertical Geometry	Horizontal Geomet	SUPERELEVATION	CHAINAGE
	927.798	937.743	-9.945	R=2345.028 K=23.450 L=200.000	R: 150.000 L: 131.064	-2.700% 2.700%	39900.000
	927.407	936.280	-8.872				39910.000
	927.043	935.077	-8.034	G=4.617% L=454.187	L: 30.000	39920.000	
	926.721	933.893	-7.172			39930.000	
	926.442	932.745	-6.302	R=1742.113 K=17.421 L=200.000	L: 30.000	39940.000	
	926.206	932.710	-6.504			39950.000	
	926.012	932.842	-6.830		L=280.250	39960.000	
	925.861	933.053	-7.193			39970.000	
	925.752	931.304	-5.552			39980.000	
	925.686	929.142	-3.456			39990.000	
	925.663	928.393	-2.732			40000.000	
	925.683	927.060	-1.377			40010.000	
	925.745	926.092	-0.347			40020.000	
	925.849	925.715	0.135			40030.000	
	925.997	925.754	0.243			40040.000	
	926.187	925.981	0.206			40050.000	
	926.419	926.164	0.256			40060.000	
	926.695	926.022	0.673			40070.000	
	927.013	925.707	1.306			40080.000	
	927.373	925.266	2.107			40090.000	
	927.776	924.884	2.893			40100.000	
	928.222	925.540	2.682			40110.000	
	928.684	927.453	1.231			40120.000	
	929.145	929.326	-0.180			40130.000	
	929.607	930.968	-1.361			40140.000	
	930.069	932.734	-2.665			40150.000	
	930.531	934.520	-3.989			40160.000	
	930.992	935.105	-4.113			40170.000	
	931.454	936.223	-4.769			40180.000	
	931.916	937.494	-5.578			40190.000	
	932.378	938.697	-6.320			40200.000	
	932.839	939.162	-6.322			40210.000	
	933.301	940.237	-6.936			40220.000	
	933.763	941.567	-7.804			40230.000	
	934.225	942.718	-8.493			40240.000	
	934.686	943.787	-9.096			40250.000	
	935.148	944.561	-9.413			40260.000	
	935.610	945.345	-9.735			40270.000	
	936.072	945.558	-9.487			40280.000	
	936.533	945.651	-9.118			40290.000	
	936.995	945.569	-8.573			40300.000	
	937.457	945.681	-8.224			40310.000	
	937.919	943.634	-5.715			40320.000	
	938.380	941.699	-3.319			40330.000	
	938.842	940.004	-1.162			40340.000	
	939.304	939.486	-0.182			40350.000	
	939.766	939.526	0.239			40360.000	
	940.227	940.578	-0.350			40370.000	
	940.689	940.689	0.000			40380.000	
	941.151	941.825	-0.674			40390.000	
	941.613	943.520	-1.907			40400.000	
	942.074	945.794	-3.720			40410.000	
	942.536	947.257	-4.721			40420.000	
	942.998	947.800	-4.802			40430.000	
	943.460	947.969	-4.509			40440.000	
	943.921	948.027	-4.106			40450.000	
	944.383	947.940	-3.557			40460.000	
	944.845	947.699	-2.854			40470.000	
	945.306	947.604	-2.298			40480.000	
	945.768	947.575	-1.807			40490.000	
	946.230	947.521	-1.291			40500.000	
	946.692	948.119	-1.427			40510.000	
	947.153	948.764	-1.611			40520.000	
	947.615	949.250	-1.635			40530.000	
	948.077	949.626	-1.549			40540.000	
	948.539	949.890	-1.351			40550.000	
	949.000	950.160	-1.160			40560.000	
	949.462	950.204	-0.742			40570.000	
	949.923	950.068	-0.145			40580.000	
	950.385	949.998	0.387			40590.000	
	950.847	949.923	0.924			40600.000	
	951.309	950.175	1.134			40610.000	
	951.771	949.918	1.852			40620.000	
	952.233	949.948	2.284			40630.000	
	952.695	950.172	2.523			40640.000	
	953.157	950.402	2.755			40650.000	
	953.619	950.941	2.678			40660.000	
	954.081	950.829	3.252			40670.000	
	954.543	951.398	3.145			40680.000	
	955.005	952.101	2.904			40690.000	
	955.467	953.316	2.151			40700.000	
	955.929	954.968	0.961				
	956.391	956.498	-0.107				
	956.853	956.929	-0.076				

-- CONSULTANTS --		-- CLIENT --		DRG. NO. :	DESIGNED BY. :	APPROVED BY. :	-- PROJECT TITLE --		-- PLAN & PROFILE --	
L.N. MALVIYA INFRA PROJECTS PVT. LTD. T-10, III FLOOR, CITY CENTER, PRESS COMPLEX, PLOT NO.-1, M.P. NAGAR, ZONE-I, BHOPAL (M.P.) 		NATIONAL HIGHWAYS INFRASTRUCTURE DEVELOPMENT CORPORATION LIMITED (NHIDCL) 		13			Consultancy Services for Preparation of Feasibility Study and Detailed Project Report For Two lane With Paved Shoulders of Tamenglong - Haflong Road In The State of Manipur on EPC Mode.		FROM DES. CH 39+900 - 40+700 PHELONG-AZURAM SECTION PKG-4	
Tel./Fax : 0755-4295421, Mob.: 09826452711, 09977004686 E-mail : lninfraprojects@gmail.com										

