

PREPARATION OF A DETAILED ESTIMATE BASED ON THE ASSESSMENT REPORT OF TECHNICAL CONSULTANT NIT AGARTALA FOR THE ESSENTIAL RESTORATION OF DAMAGES STRETCHES AND PLAN AND PROFILE FOR THE PROPOSED RAISING OF FRL ON OVERTOPPED STRETCHES INCLUDING THE CROSS-DRAINAGE STRUCTURE AND THE RIVER TRAINING /PROTECTIVE WORKS ON VARIOUS ROADS/BRIDGE PROJECTS UNDER PMU UDAIPUR



DRAWING VOLUME OVERTOPPED AREA

SUBMITTED TO



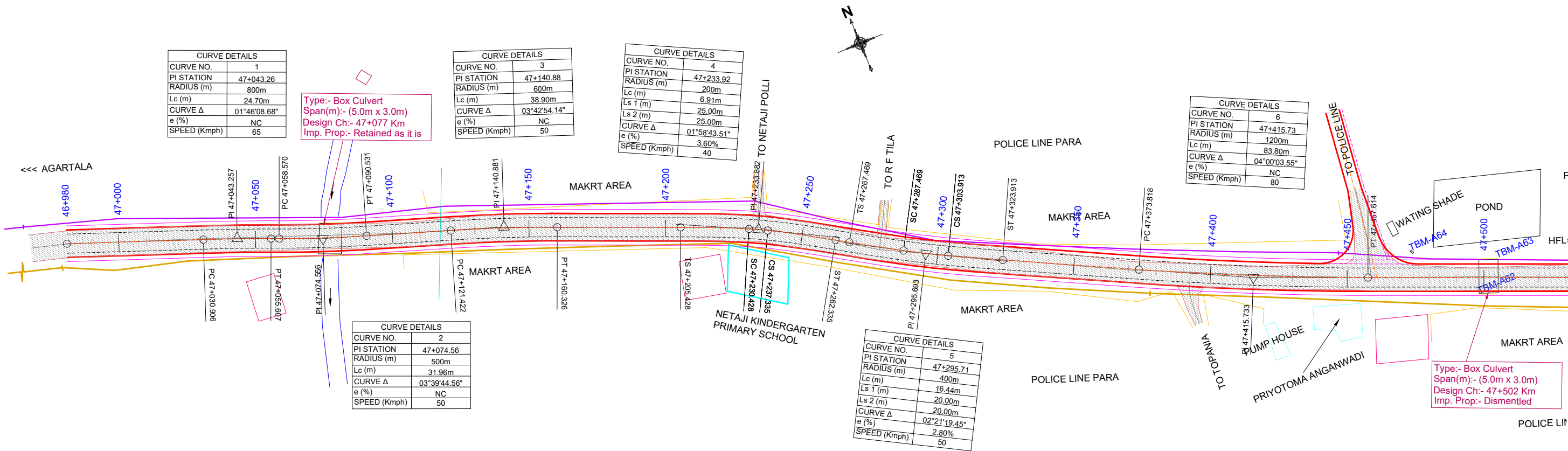
NATIONAL HIGHWAYS INFRASTRUCTURE
DEVELOPMENT CORPORATION LIMITED



PREPARED BY

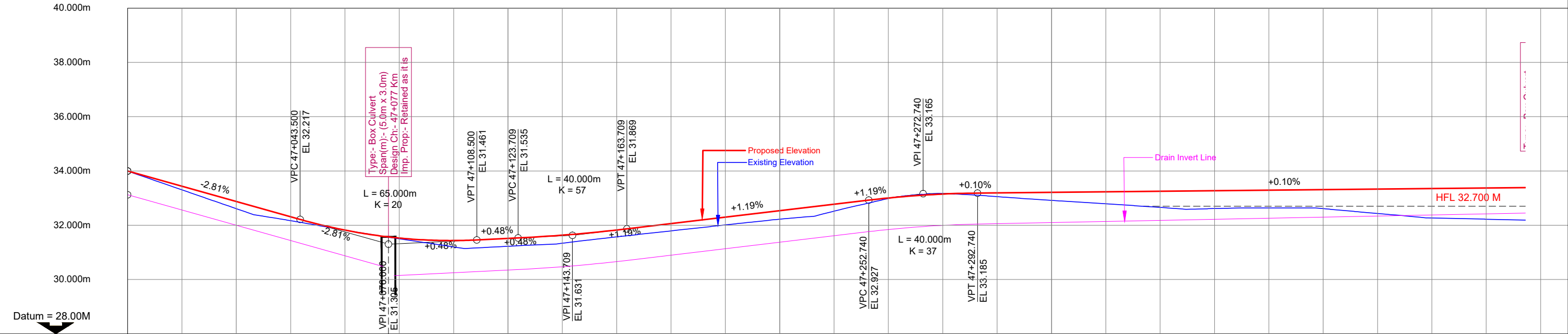


C. E. Testing Company Pvt. Ltd.
124-A, NSC Bose Road, Kolkata 700092

AGARTALA - SABROOM (NH-08)
Km. 46+980 TO Km. 47+940




					<div>SCALE: HOR - 1:1000 VER - 1:100</div>		<div><div>CLIENT: NATIONAL HIGHWAYS & INFRASTRUCTURE DEVELOPMENT CORPORATION LIMITED (NHIDCL) Tower-A, World Trade Centre, Naurojni Nagar Market, Block G, Naurojni Nagar, Safdarjung Enclave, New Delhi, Delhi 110029</div></div>	<div>PLAN & PROFILE Km. 46+980 TO Km. 47+940</div>		<div>CONSULTANT : <div><div>CE TESTING COMPANY PVT. LTD. 124-A, N.S.C. Bose Road Kolkata - 700092.</div></div></div>		<div>Dwg. No. CET/2025/4669/NH-08/PP_1</div>				
MKD.	DATE	DESCRIPTION	CHKD.	APPRD.	<div>DATE: April ,2025</div>	<div>PROJECT: Preparation of a detailed estimate based on the assessment report of technical consultant NIT Agartala for the essential restoration of damages stretches and Plan & Profile for the proposed raising of FRL on overtopped stretches including the cross drainage structure and the river training / protective works on various roads / bridge projects under PMU Udaipur</div>		<div>ROAD NAME: AGARTALA TO SABROOM</div>				Drawn By.	Design By.	Checked By.	Approved By.	
REVISIONS													G.Banerjee	B.Das	S.Dev	A.Nayek



PROPOSED ELEVATION	33.998	33.437	32.876	32.315	31.823	31.530	31.439	31.517	31.637	31.826	32.062	32.300	32.538	32.776	33.006	33.150	33.192	33.212	33.232	33.252	33.272	33.292	33.312	33.332	33.352	33.372
EXISTING ELEVATION	33.998	33.305	32.613	32.169	31.823	31.502	31.203	31.228	31.340	31.576	31.795	32.014	32.225	32.521	32.987	33.165	33.055	32.917	32.792	32.657	32.617	32.638	32.614	32.435	32.269	32.225
ELEVATION DIFFERRNCE	-0.000m	0.132m	0.263m	0.146m	-0.001m	0.028m	0.236m	0.289m	0.296m	0.250m	0.268m	0.287m	0.313m	0.255m	0.020m	-0.015m	0.137m	0.296m	0.441m	0.595m	0.655m	0.655m	0.698m	0.898m	1.084m	1.148m
DRAIN INVERT LEVEL	33.123	32.562	32.001	31.440	30.879	30.154	30.253	30.352	30.475	30.665	30.901	31.139	31.377	31.615	31.846	31.998	32.059	32.099	32.139	32.179	32.219	32.259	32.299	32.339	32.379	32.419
HORIZONTAL CURVE	<div><div>L = 49.906m</div><div>R = 800.000m</div><div>L = 2.964m</div><div>R = 500.000m</div><div>L = 30.892m</div><div>R = 600.000m</div><div>L = 45.102m</div><div>Ls = 70.711m</div><div>R = 200.000m</div><div>Ls = 70.711m</div><div>L = 5.134m</div><div>Ls = -89.443m</div><div>R = 400.000m</div><div>Ls = -89.443m</div><div>L = 49.904m</div><div>R = 1200.000m</div></div>																									
VERTICAL CURVE	<div><div>-2.81%</div><div>65.000m VC K = 20</div><div>0.48%</div><div>40.000m VC K = 57</div><div>1.19%</div><div>40.000m VC K = -37</div><div>0.10%</div></div>																									
CHAINAGE (KM)	46+980	47+000	47+020	47+040	47+060	47+080	47+100	47+120	47+140	47+160	47+180	47+200	47+220	47+240	47+260	47+280	47+300	47+320	47+340	47+360	47+380	47+400	47+420	47+440	47+460	47+480

SCALE:
HOR - 1:1000
VER - 1:100




PROJECT:
Preparation of a detailed estimate based on the assessment report of technical consultant NIT Agartala for the essential restoration of damages stretches and Plan & Profile for the proposed raising of FRL on overtopped stretches including the cross drainage structure and the river training / protective works on various roads / bridge projects under PMU Udaipur

CLIENT: NATIONAL HIGHWAYS & INFRASTRUCTURE DEVELOPMENT CORPORATION LIMITED (NHIDCL)
Tower-A, World Trade Centre, Naurojni Nagar Market, Block G, Nauroji Nagar, Safdarjung Enclave, New Delhi, Delhi 110029

PLAN & PROFILE
Km. 46+980 TO Km. 47+800

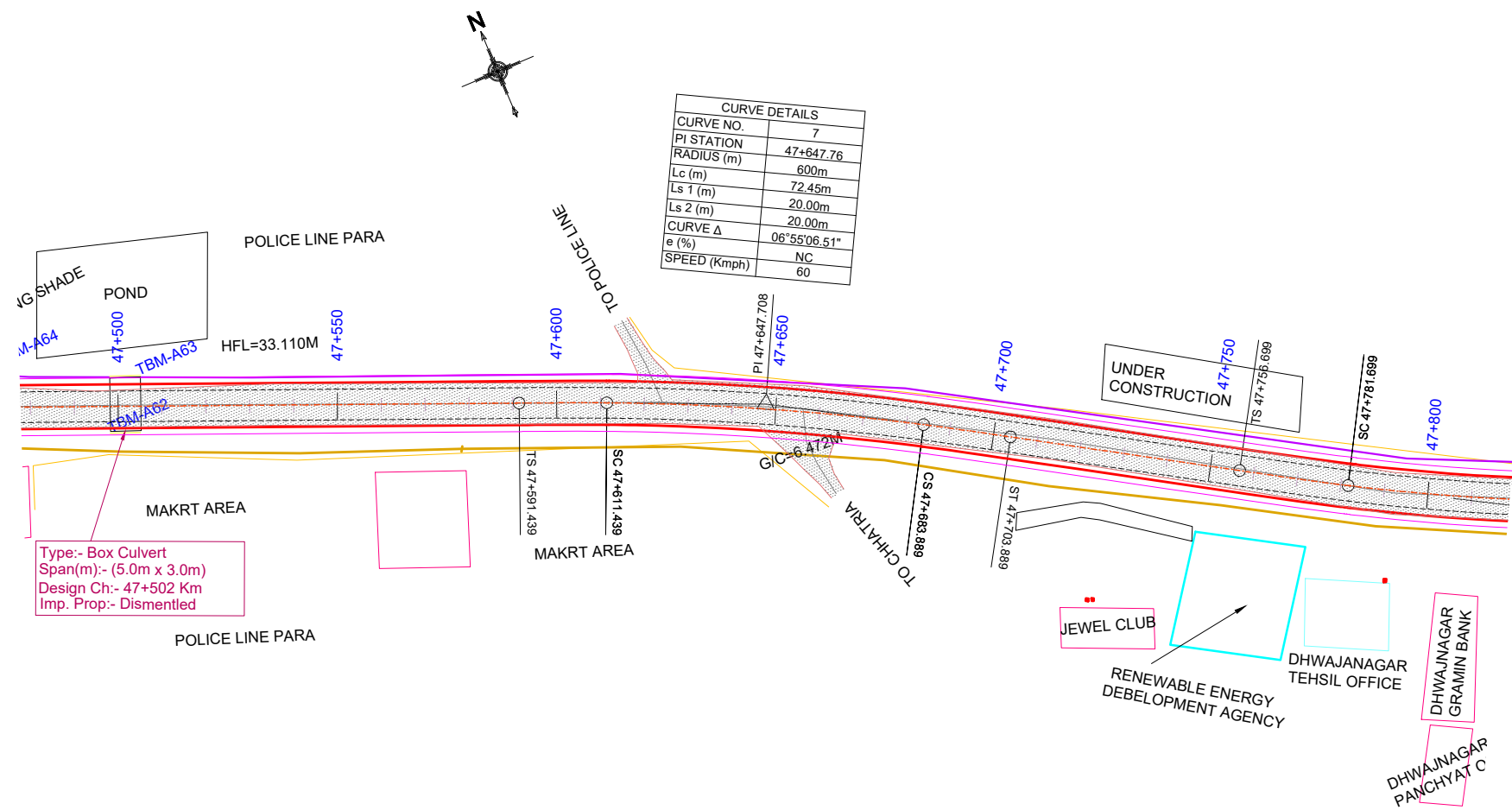
ROAD NAME:
AGARTALA TO SABROOM

CONSULTANT :
**CE TESTING COMPANY PVT. LTD.**
124-A, N.S.C. Bose Road
Kolkata - 700092.

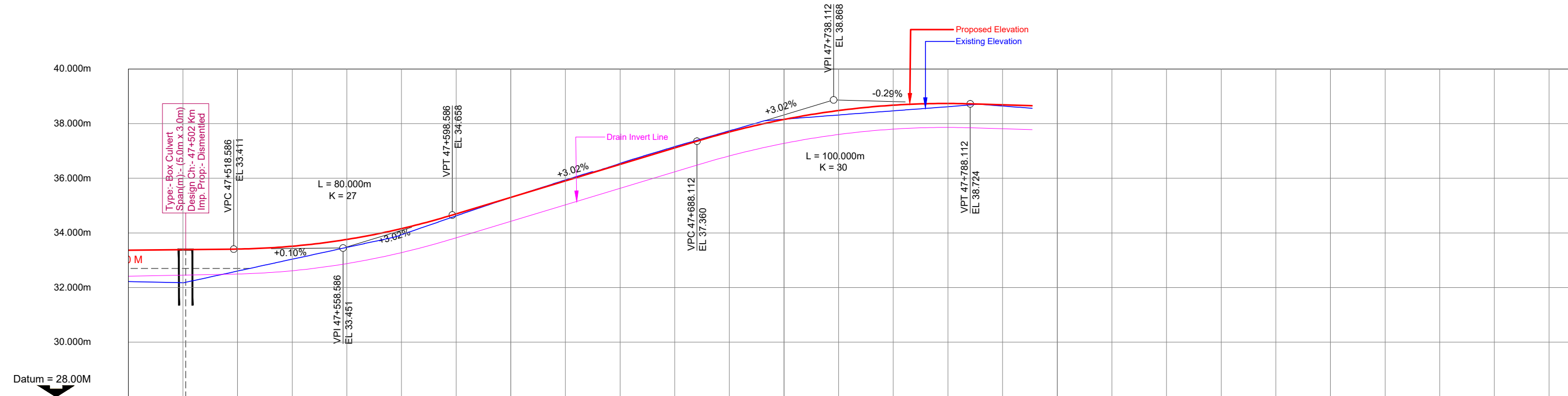
Dwg. No. CET/2025/4669/NH-08/PP_1A

Drawn By. Design By. Checked By. Approved By.

G.Banerjee B.Das S.Dev A.Nayek



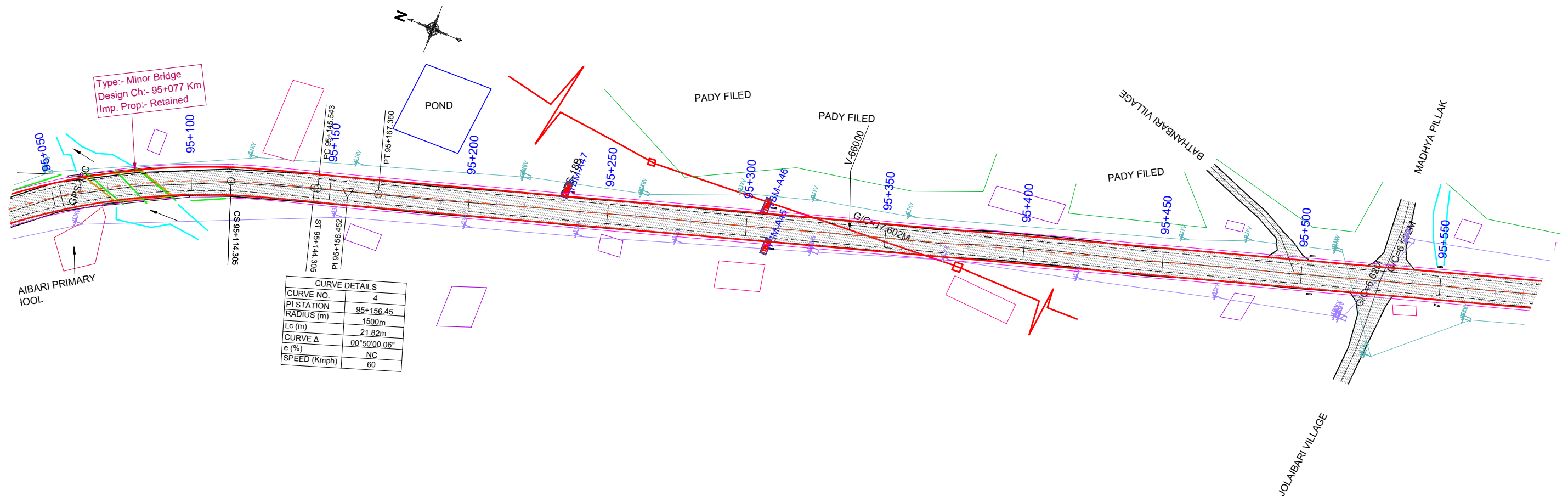
					SCALE: HOR - 1:1000 VER - 1:100		CLIENT: NATIONAL HIGHWAYS & INFRASTRUCTURE DEVELOPMENT CORPORATION LIMITED (NHIDCL) Tower-A, World Trade Centre, Naurojni Nagar Market, Block G, Nauroji Nagar, Safdarjung Enclave, New Delhi, Delhi 110029	PLAN & PROFILE Km. 46+980 TO Km. 47+940	CONSULTANT :  CE TESTING COMPANY PVT. LTD. 124-A, N.S.C. Bose Road Kolkata - 700092.	Dwg. No. CET/2025/4669/NH-08/PP_2
MKD.	DATE	DESCRIPTION	CHKD.	APPRD.	DATE: April ,2025	PROJECT: Preparation of a detailed estimate based on the assessment report of technical consultant NIT Agartala for the essential restoration of damages stretches and Plan & Profile for the proposed raising of FRL on overtopped stretches including the cross drainage structure and the river training / protective works on various roads / bridge projects under PMU Udaipur	ROAD NAME: AGARTALA TO SABROOM			Drawn By. Design By. Checked By. Approved By.
REVISIONS										G.Banerjee B.Das S.Dev A.Nayek



PROPOSED ELEVATION	33.372	33.392	33.413	33.516	33.765	34.160	34.701	35.304	35.908	36.511	37.115	37.695	38.154	38.480	38.675	38.737	38.690
EXISTING ELEVATION	32.225	32.180	32.608	33.041	33.474	33.937	34.627	35.300	35.941	36.551	37.159	37.737	38.164	38.317	38.469	38.620	38.643
ELEVATION DIFFERRNCE	1.148m	1.213m	0.805m	0.475m	0.291m	0.223m	0.074m	0.004m	-0.033m	-0.040m	-0.044m	-0.042m	-0.010m	0.163m	0.206m	0.117m	0.047m
DRAIN INVERT LEVEL	32.419	32.459	32.499	32.620	32.881	33.283	33.826	34.429	35.033	35.636	36.240	36.820	37.278	37.605	37.799	37.861	37.815
HORIZONTAL CURVE	<div><div>L = 133.824m</div><div>Ls = 109.545m</div><div>R = 600.000m</div><div>Ls = 109.545m</div><div>L = 52.810m</div><div>Ls = -111.803m</div></div>																
VERTICAL CURVE	<div><div>80.000m VC</div><div>K = 27</div><div>3.02%</div><div>100.000m VC</div><div>K = -30</div></div>																
CHAINAGE (KM)	47+480	47+500	47+520	47+540	47+560	47+580	47+600	47+620	47+640	47+660	47+680	47+700	47+720	47+740	47+760	47+780	47+800

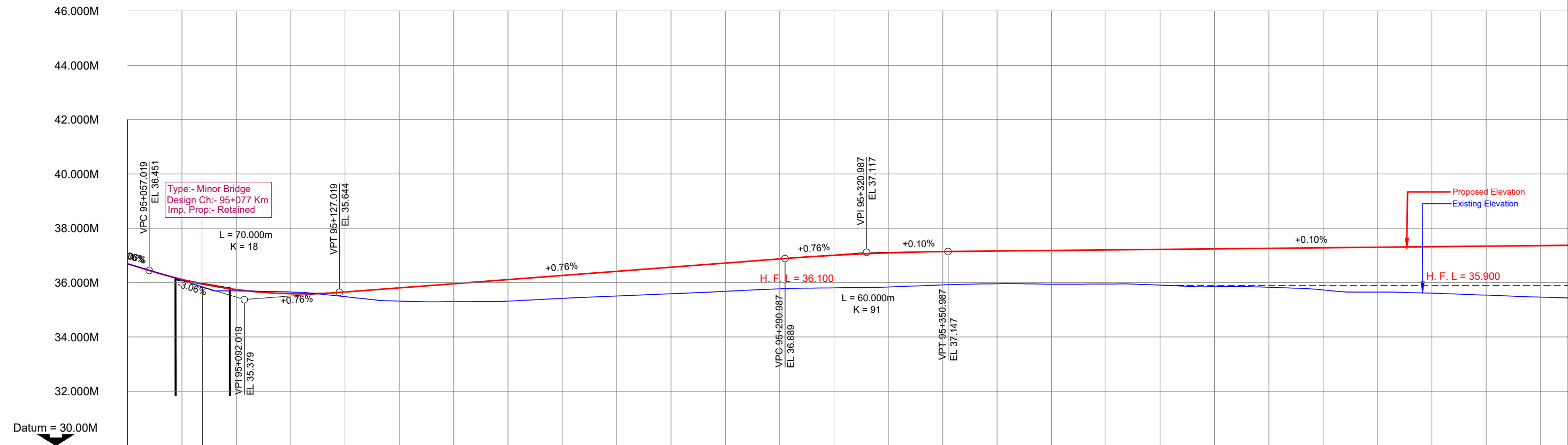
					SCALE: HOR - 1:1000 VER - 1:100	 <div>CLIENT: NATIONAL HIGHWAYS & INFRASTRUCTURE DEVELOPMENT CORPORATION LIMITED (NHIDCL) Tower-A, World Trade Centre, Nauroji Nagar Market, Block G, Nauroji Nagar, Safdarjung Enclave, New Delhi, Delhi 110029</div>	PLAN & PROFILE Km. 46+980 To Km. 47+800		<div>CONSULTANT : CE TESTING COMPANY PVT. LTD. 124-A, N.S.C. Bose Road Kolkata - 700092.</div>	Dwg. No. CET/2025/4669/NH-08/PP_2A			
MKD.	DATE	DESCRIPTION	CHKD.	APPRD.	DATE: April ,2025		ROAD NAME: AGARTALA TO SABROOM			Drawn By.	Design By.	Checked By.	Approved By.
REVISIONS					PROJECT: Preparation of a detailed estimate based on the assessment report of technical consultant NIT Agartala for the essential restoration of damages stretches and Plan & Profile for the proposed raising of FRL on overtopped stretches including the cross drainage structure and the river training / protective works on various roads / bridge projects under PMU Udaipur					G.Banerjee	B.Das	S.Dev	A.Nayek

AGARTALA - SABROOM (NH-08)
Km 95+050 to Km 95+930



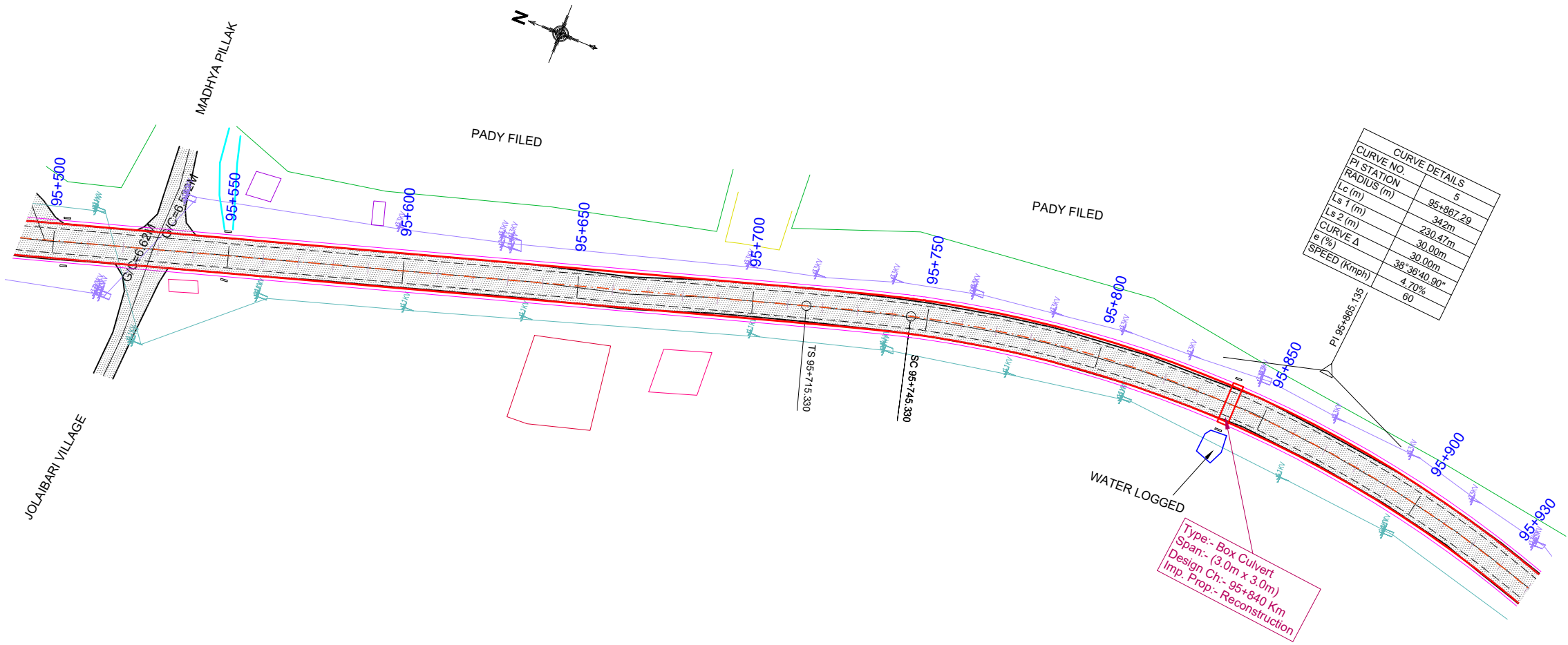
CURVE DETAILS	
CURVE NO.	4
PI STATION	95+156.45
RADIUS (m)	1500m
Lc (m)	21.82m
CURVE Δ	00°50'00.06"
e (%)	NC
SPEED (Kmph)	60

[illegible]

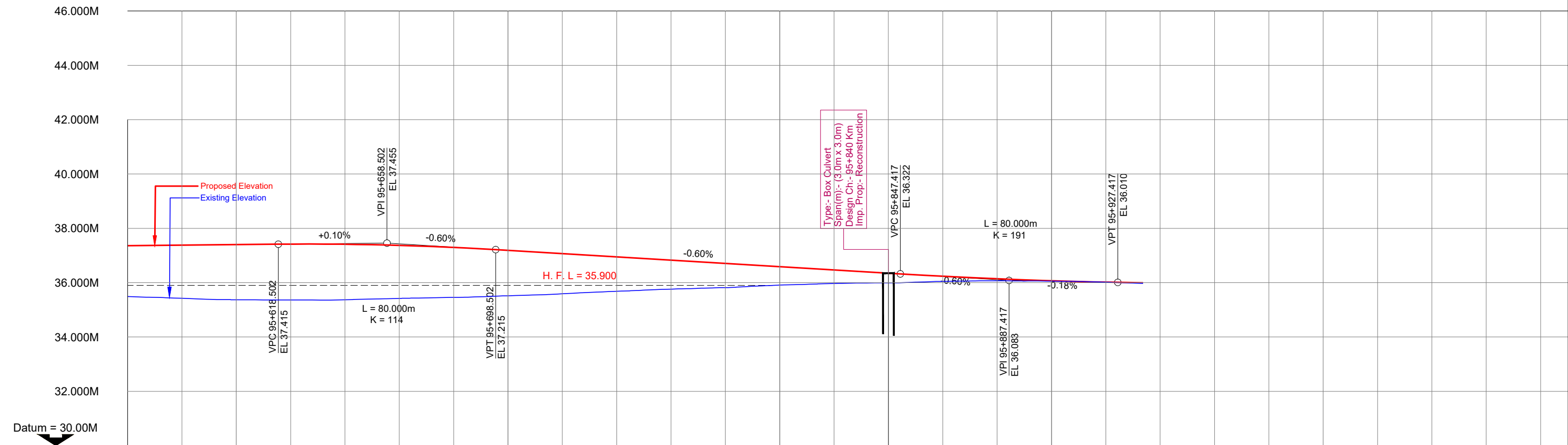


PROPOSED ELEVATION	36.276	35.839	35.619	35.618	35.766	35.918	36.070	36.222	36.373	36.525	36.677	36.829	36.973	37.076	37.136	37.159	37.179	37.199	37.219	37.239	37.259	37.279	37.299	37.319	37.339	37.359	37.379	
EXISTING ELEVATION	36.580	36.283	35.698	35.676	35.550	35.339	35.298	35.309	35.393	35.487	35.569	35.654	35.749	35.805	35.828	35.897	35.953	35.954	35.949	35.935	35.849	35.853	35.784	35.655	35.631	35.565	35.487	35.424
ELEVATION DIFFERRNCE	-0.007m	0.141m	-0.056m	0.068m	0.427m	0.620m	0.760m	0.829m	0.887m	0.956m	1.023m	1.080m	1.168m	1.248m	1.239m	1.206m	1.225m	1.250m	1.284m	1.390m	1.406m	1.496m	1.645m	1.689m	1.775m	1.872m	1.955m	
HORIZONTAL CURVE	<div><div></div><div><div>L = 1.238m</div><div>Ls = 85.732m</div><div>R = 1500.000m</div></div><div>L = 547.970m</div></div>																											
VERTICAL CURVE	<div><div>06%</div><div>70.000m VC K = 18</div><div>0.76%</div><div>60.000m VC K = -91</div><div>0.10%</div></div>																											
CHAINAGE (KM)	95+050	95+060	95+080	95+100	95+120	95+140	95+160	95+180	95+200	95+220	95+240	95+260	95+280	95+300	95+320	95+340	95+360	95+380	95+400	95+420	95+440	95+460	95+480	95+500	95+520	95+540	95+560	95+580

					SCALE: HOR - 1:1000 VER - 1:100		CLIENT: NATIONAL HIGHWAYS & INFRASTRUCTURE DEVELOPMENT CORPORATION LIMITED (NHIDCL) Tower-A, World Trade Centre, Nauronji Nagar Market, Block G, Nauronji Nagar, Safdarjung Enclave, New Delhi, Delhi 110029	PLAN & PROFILE Km 95+050 to Km 95+930		CONSULTANT :  CE TESTING COMPANY PVT. LTD. 124-A, N.S.C. Bose Road Kolkata - 700092.	Dwg. No. CET/2025/4669/NH-08/PP_1A			
MKD.	DATE	DESCRIPTION	CHKD.	APPRD.	DATE: March ,2025			ROAD NAME: AGARTALA TO SABROOM			Drawn By.	Design By.	Checked By.	Approved By.
REVISIONS						PROJECT: Preparation of a detailed estimate based on the assessment report of technical consultant NIT Agartala for the essential restoration of damages stretches and Plan & Profile for the proposed raising of FRL on overtopped stretches including the cross drainage structure and the river training / protective works on various roads / bridge projects under PMU Udaipur					G.Banerjee	B.Das	S.Dev	A.Nayek



					<div>SCALE: HOR - 1:1000 VER - 1:100</div>	<div><div>CLIENT: NATIONAL HIGHWAYS & INFRASTRUCTURE DEVELOPMENT CORPORATION LIMITED (NHIDCL) Tower-A, World Trade Centre, Naurojni Nagar Market, Block G, Nauroji Nagar, Safdarjung Enclave, New Delhi, Delhi 110029</div></div>	<div>PLAN & PROFILE Km 95+050 to Km 95+930</div>	<div>CONSULTANT :  CE TESTING COMPANY PVT. LTD. 124-A, N.S.C. Bose Road Kolkata - 700092.</div>	Dwg. No. CET/2025/4669/NH-08/PP_2			
MKD.	DATE	DESCRIPTION	CHKD.	APPRD.					Drawn By.	Design By.	Checked By.	Approved By.
REVISIONS					DATE: March ,2025	PROJECT: Preparation of a detailed estimate based on the assessment report of technical consultant NIT Agartala for the essential restoration of damages stretches and Plan & Profile for the proposed raising of FRL on overtopped stretches including the cross drainage structure and the river training / protective works on various roads / bridge projects under PMU Udaipur	ROAD NAME: AGARTALA TO SABROOM		G.Banerjee	B.Das	S.Dev	A.Nayek

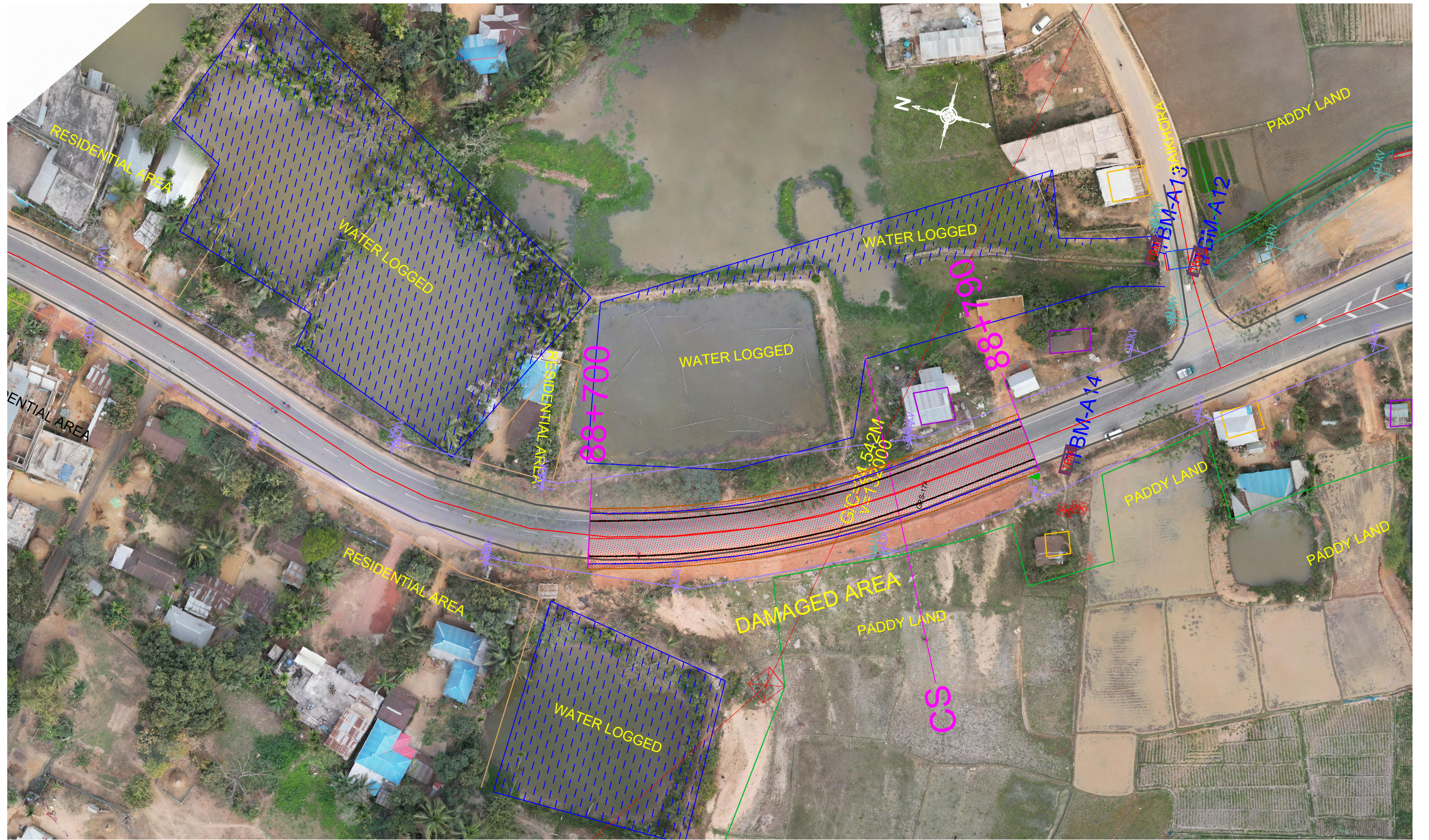


PROPOSED ELEVATION	37.359	37.379	37.399	37.419	37.413	37.373	37.297	37.188	37.068	36.948	36.828	36.708	36.589	36.469	36.349	36.235	36.142	36.070	36.019		
EXISTING ELEVATION	35.487	35.424	35.372	35.363	35.372	35.421	35.458	35.518	35.591	35.683	35.762	35.818	35.911	35.970	35.993	36.047	36.068	36.059	36.016	35.987	
ELEVATION DIFFERRNCE	1.872m	1.955m	2.027m	2.056m	2.041m	1.951m	1.840m	1.670m	1.477m	1.265m	1.066m	0.890m	0.678m	0.499m	0.356m	0.188m	0.074m	0.011m	0.003m		
HORIZONTAL CURVE									<div><div></div><div>Rs = 101.292m</div><div></div><div></div><div>R = 342.000m</div></div>												
VERTICAL CURVE					80.000m VC K = -114				-0.60%								80.000m VC K = 191				
CHAINAGE (KM)	95+560	95+580	95+600	95+620	95+640	95+660	95+680	95+700	95+720	95+740	95+760	95+780	95+800	95+820	95+840	95+860	95+880	95+900	95+920	95+930	

					<div>SCALE: HOR - 1:1000 VER - 1:100</div> <div></div> <div>CLIENT: NATIONAL HIGHWAYS & INFRASTRUCTURE DEVELOPMENT CORPORATION LIMITED (NHIDCL) Tower-A, World Trade Centre, Naurojni Nagar Market, Block G, Nauroji Nagar, Safdarjung Enclave, New Delhi, Delhi 110029</div>	<div>PLAN & PROFILE Km 95+050 to Km 95+930</div>		<div>CONSULTANT :  CE TESTING COMPANY PVT. LTD. 124-A, N.S.C. Bose Road Kolkata - 700092.</div>		Dwg. No. CET/2025/4669/NH-08/PP_2A			
<div>DATE: March , 2025</div>										ROAD NAME: AGARTALA TO SABROOM		Drawn By.	Design By.
<div>PROJECT: Preparation of a detailed estimate based on the assessment report of technical consultant NIT Agartala for the essential restoration of damages stretches and Plan & Profile for the proposed raising of FRL on overtopped stretches including the cross drainage structure and the river training / protective works on various roads / bridge projects under PMU Udaipur</div>						G.Banerjee B.Das S.Dev A.Nayek							
MKD.	DATE	DESCRIPTION	CHKD.	APPRD.									
REVISIONS													

PLAN

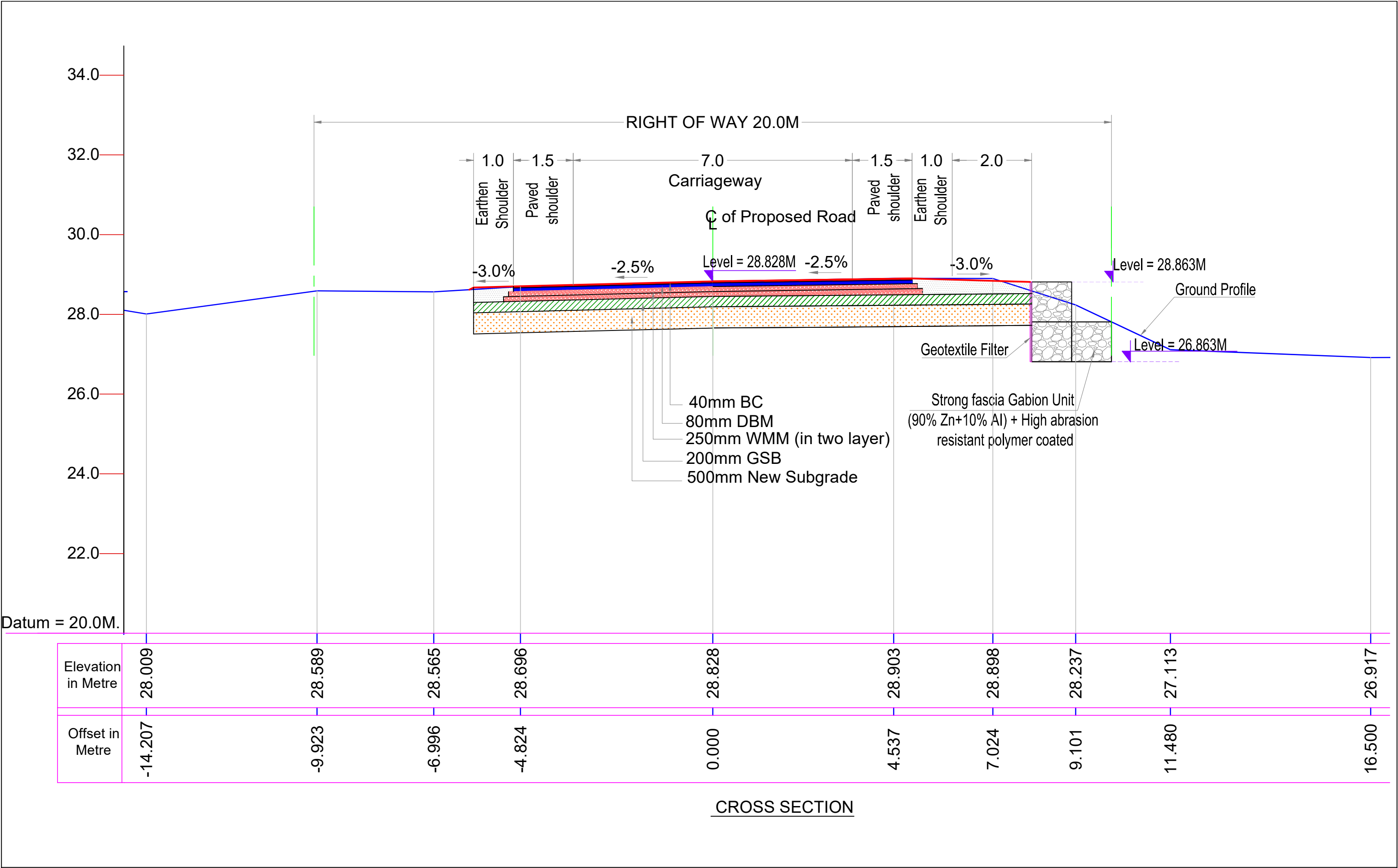
CH. 88.700 KM TO 88.790 KM





					<div>SCALE: HOR - 1:500</div> <div><div>NHIDCL BUILDING INFRASTRUCTURE - BUILDING THE NATION</div></div>	CLIENT: NATIONAL HIGHWAYS & INFRASTRUCTURE DEVELOPMENT CORPORATION LIMITED (NHIDCL) Tower-A, World Trade Centre, Naurojni Nagar Market, Block G, Nauroji Nagar, Safdarjung Enclave, New Delhi, Delhi 110029	PLAN Km 88+700 to Km 88+790	CONSULTANT : <div><div>CETEST Engineering Consultants An ISO 9001, 14001 & 45001 Certified Company</div></div> CE TESTING COMPANY PVT. LTD. 124-A, N.S.C. Bose Road Kolkata - 700092.	Dwg. No. CET/2025/PLAN/01				
									PROJECT: Preparation of a detailed estimate based on the assessment report of technical consultant NIT Agartala for the essential restoration of damages stretches and Plan & Profile for the proposed raising of FRL on overtopped stretches including the cross drainage structure and the river training / protective works on various roads / bridge projects under PMU Udaipur	ROAD NAME: AGARTALA TO SABROOM		Drawn By.	Design By.
MKD.	DATE	DESCRIPTION	CHKD.	APPRD.	DATE: April ,2025					G.Banerjee	B.Das	S.Dev	A.Nayek
REVISIONS													

CROSS SECTION

CH. - 88.700 KM TO 88.790KM



					<div>SCALE: N.T.S.</div> <div></div>	CLIENT: NATIONAL HIGHWAYS & INFRASTRUCTURE DEVELOPMENT CORPORATION LIMITED (NHIDCL) Tower-A, World Trade Centre, Naurojni Nagar Market, Block G, Nauroji Nagar, Safdarjung Enclave, New Delhi, Delhi 110029	<div>CROSS SECTION Km 88+700 to Km 88+790</div>	CONSULTANT : <div>CETEST Engineering Consultants <small>An ISO 9001, 14001 & 45001 Certified Company</small></div> <div>CE TESTING COMPANY PVT. LTD. 124-A, N.S.C. Bose Road Kolkata - 700092.</div>	Dwg. No. CET/2025/CS/01				
									Drawn By.	Design By.	Checked By.	Approved By.	
MKD.	DATE	DESCRIPTION	CHKD.	APPRD.	DATE: April ,2025	PROJECT: Preparation of a detailed estimate based on the assessment report of technical consultant NIT Agartala for the essential restoration of damages stretches and Plan & Profile for the proposed raising of FRL on overtopped stretches including the cross drainage structure and the river training / protective works on various roads / bridge projects under PMU Udaipur	ROAD NAME: AGARTALA TO SABROOM			G.Banerjee	B.Das	S.Dev	A.Nayek
REVISIONS													